



**HAL**  
open science

## **Listeria monocytogenes: Investigation of Fitness in Soil Does Not Support the Relevance of Ecotypes**

Yann Sévellec, Eliette Ascencio, Pierre-Emmanuel Douarre, Benjamin Félix, Laurent Gal, Dominique Garmyn, Laurent Guillier, Pascal P. Piveteau, Sophie Roussel

### ► To cite this version:

Yann Sévellec, Eliette Ascencio, Pierre-Emmanuel Douarre, Benjamin Félix, Laurent Gal, et al.. *Listeria monocytogenes: Investigation of Fitness in Soil Does Not Support the Relevance of Ecotypes*. *Frontiers in Microbiology*, 2022, 13, pp.917588. 10.3389/fmicb.2022.917588 . hal-03712850

**HAL Id: hal-03712850**

**<https://institut-agro-dijon.hal.science/hal-03712850v1>**

Submitted on 19 Oct 2023

**HAL** is a multi-disciplinary open access archive for the deposit and dissemination of scientific research documents, whether they are published or not. The documents may come from teaching and research institutions in France or abroad, or from public or private research centers.

L'archive ouverte pluridisciplinaire **HAL**, est destinée au dépôt et à la diffusion de documents scientifiques de niveau recherche, publiés ou non, émanant des établissements d'enseignement et de recherche français ou étrangers, des laboratoires publics ou privés.



Distributed under a Creative Commons Attribution 4.0 International License



# *Listeria monocytogenes*: Investigation of Fitness in Soil Does Not Support the Relevance of Ecotypes

Yann Sévellec<sup>1</sup>, Eliette Ascencio<sup>2</sup>, Pierre-Emmanuel Douarre<sup>1</sup>, Benjamin Félix<sup>1</sup>, Laurent Gal<sup>2</sup>, Dominique Garmyn<sup>2</sup>, Laurent Guillier<sup>3</sup>, Pascal Piveteau<sup>4†</sup> and Sophie Roussel<sup>1\*†</sup>

<sup>1</sup> Maisons-Alfort Laboratory for Food Safety, Salmonella and Listeria Unit, University of Paris-Est, French Agency for Food, Environmental and Occupational Health and Safety (ANSES), Maisons-Alfort, France, <sup>2</sup> Agroecologie, AgroSup Dijon, INRAE, Bourgogne Franche-Comté University, Dijon, France, <sup>3</sup> Risk Assessment Department, French Agency for Food, Environmental and Occupational Health and Safety (ANSES), University of Paris-Est, Maisons-Alfort, France, <sup>4</sup> INRAE, UR OPAALE, Rennes, France

## OPEN ACCESS

### Edited by:

Lin Lin,  
Jiangsu University, China

### Reviewed by:

Renato Hohl Orsi,  
Cornell University, United States  
Itumeleng Matle,  
Agricultural Research Council  
of South Africa (ARC-SA),  
South Africa

### \*Correspondence:

Sophie Roussel  
sophie.roussel@anses.fr

† These authors have contributed  
equally to this work

### Specialty section:

This article was submitted to  
Food Microbiology,  
a section of the journal  
Frontiers in Microbiology

Received: 11 April 2022

Accepted: 17 May 2022

Published: 13 June 2022

### Citation:

Sévellec Y, Ascencio E,  
Douarre P-E, Félix B, Gal L,  
Garmyn D, Guillier L, Piveteau P and  
Roussel S (2022) *Listeria*  
*monocytogenes*: Investigation  
of Fitness in Soil Does Not Support  
the Relevance of Ecotypes.  
*Front. Microbiol.* 13:917588.  
doi: 10.3389/fmicb.2022.917588

*Listeria monocytogenes* (*Lm*) is a ubiquitous bacterium that causes the serious foodborne illness listeriosis. Although soil is a primary reservoir and a central habitat for *Lm*, little information is available on the genetic features underlying the fitness of *Lm* strains in this complex habitat. The aim of this study was to identify (i) correlations between the strains fitness in soil, their origin and their phylogenetic position (ii) identify genetic markers allowing *Lm* to survive in the soil. To this end, we assembled a balanced panel of 216 *Lm* strains isolated from three major ecological compartments (outdoor environment, animal hosts, and food) and from 33 clonal complexes occurring worldwide. The ability of the 216 strains to survive in soil was tested phenotypically. Hierarchical clustering identified three phenotypic groups according to the survival rate (SR): phenotype 1 “poor survivors” (SR < 2%), phenotype 2 “moderate survivors” (2% < SR < 5%) and phenotype 3 “good survivors” (SR > 5%). Survival in soil depended neither on strains’ origin nor on their phylogenetic position. Genome-wide-association studies demonstrated that a greater number of genes specifically associated with a good survival in soil was found in lineage II strains (57 genes) than in lineage I strains (28 genes). Soil fitness was mainly associated with variations in genes (i) coding membrane proteins, transcription regulators, and stress resistance genes in both lineages (ii) coding proteins related to motility and (iii) of the category “phage-related genes.” The cumulative effect of these small genomic variations resulted in significant increase of soil fitness.

**Keywords:** *Listeria monocytogenes*, soil, fitness, survival, ecotype, strain origin, clonal complex, genome-wide-association study

## INTRODUCTION

*Listeria monocytogenes* (*Lm*) is a facultative intracellular pathogen responsible for listeriosis, a serious foodborne disease affecting both humans and animals. *Lm* is a ubiquitous bacterium, which can be found in many habitats including soil, water, plants, animals, foodstuffs and humans. Farm animals are important reservoirs of *Lm* and they contribute to the circulation of *Lm* in the farm

environment and to its transfer in soil through fecal shedding (Hurtado et al., 2017). Increasing amounts of data on the prevalence of *Lm* in wildlife suggest that various species of wild animals can act as reservoirs for *Lm* and may participate in its transfer to soil (Yoshida et al., 2000; Hellstrom et al., 2008; Gismervik et al., 2015; Weindl et al., 2016; Hydeskov et al., 2019; Parsons et al., 2019). Other routes of transfer of *Lm* to soil include organic fertilization and decaying plant material (McLaughlin et al., 2011).

Since the first discovery of occurrence of *Lm* in soil samples collected from farms in 1960 (Welshimer, 1960), *Lm* has been considered as a telluric bacterial species. Follow-up studies, listed in Vivant et al. (2013) have confirmed the presence of *Lm* in different soil types including uncultivated and cultivated soils and meadows. Soil may play a pivotal role in transmission of *Lm* to cultivated plants and farm animals, eventually leading to contamination of foodstuffs (Piveteau et al., 2011; Vivant et al., 2013; Kallipolitis et al., 2020). However, a deep understanding of the ecology of *Lm* in soil and of the contribution of intrinsic factors and intraspecific diversity to its fitness in this habitat is required for the management of *Lm* in food systems from the natural environment to the food chain.

*Lm* is a genetically heterogeneous species divided into 13 serotypes and three major phylogenetic lineages, of which lineages I and II are the most frequently encountered (Orsi et al., 2011). These two lineages group the serotypes most commonly associated with human listeriosis, including serotypes 1/2b and 4b (lineage I) and serotype 1/2a (lineage II). Most strains are grouped into major clonal complexes (CCs) that have descended from a common ancestor and accumulated differences among themselves by a predominantly mutational process (Ragon et al., 2008; Chenal-Francisque et al., 2011; Cantinelli et al., 2013; Haase et al., 2014). CCs evolve slowly over large temporal and geographic scales (Chenal-Francisque et al., 2011; Cantinelli et al., 2013).

Hypervirulent and hypovirulent CCs have been identified (Maury et al., 2016). Hyper virulent CCs such as for instance CC1, CC2, CC6, are those most likely to cause disease, in particular central nervous system or maternal-neonatal listeriosis (Maury et al., 2016) and account for the majority of human listeriosis outbreaks, sporadic human cases (Painset et al., 2019), and animals listeriosis (Dreyer et al., 2016; Papić et al., 2019). On the contrary, hypo virulent CCs, such as for instance CC9 and CC121, merely cause disease in highly immuno-compromised patients and show limited virulence in humanized mouse models (Maury et al., 2016). Many typing studies have indicated that the relative prevalence of CCs in animals, human clinical cases and in food is strikingly different (Henri et al., 2016; Felix et al., 2018; Painset et al., 2019). This suggests that some *Lm* strains thrive better in specific ecological compartments. To date, the link between the genetic diversity of *Lm* (lineage, serotype and CCs), the strain origin (food, animal, and environment) and *Lm* ability to survive in soil has yet to be investigated. From the point of view of food safety, investigating the fate of hyper virulent strains in agri-food systems once transferred in soil is of particular interest. This could lead to innovative measures of control and risk assessment.

Genome-wide association studies (GWAS) represent today powerful tools for the identification of associations between genomic elements and phenotypic properties. GWAS is a top-down approach that involves testing large numbers of genetic variants in a population of individual organisms with a given phenotype. GWAS dealing with food-related phenotypes was recently applied to *Lm* traits associated to cold, salt, acid, desiccation stresses (Hingston et al., 2017; Fritsch et al., 2019) adhesion to polystyrene (Mahoney et al., 2022) and persistence in dairy farms (Castro et al., 2021).

In this study, GWAS was performed to elucidate the phenotype-genotype relationships in *Lm* soil survival. We focused on a dataset of 216 strains selected to be representative of the major CCs or sequence types (STs) circulating between three major compartments of *Lm*: natural and farming environment, wild/farm animals and food. This panel was implemented to investigate genomic determinants of soil survival following three working hypotheses (i) soil fitness depends on the strain origin (ii) soil fitness depends on the phylogenetic position of the strains and (iii) soil fitness can be associated with specific genes.

## MATERIALS AND METHODS

### Strain Panel

The panel was composed of 216 *Lm* strains belonging to 33 clonal complexes from lineage I ( $n = 95$ ) and lineage II ( $n = 121$ ; **Table 1** and **Supplementary Table 1**). The strains were collected over more than 30 years with most of them isolated after 2010, across 15 different European countries.

The 97 strains isolated from the environment and primary farm production were part of the strain collection (Félix et al., 2022) built in the frame of the European project “LISTADAPT” (Adaptive traits of *Listeria monocytogenes* to its diverse ecological niches).<sup>1</sup> In all, strains were selected from farm animals (bovine, ovine, caprine, and pigs), wild animals (deer, badger, slugs, dolphin, wild boar, fox, and roe deer) and soil. They were selected to be representative of the major CCs or STs found in the LISTADAPT collection (Félix et al., 2022). In order to maximize the genetic diversity, at least two to four strains were selected per CC and ST with the greatest geographical breadth and the highest degree of ST diversity within each CC (**Supplementary Table 1**).

Additionally, 99 strains were selected from four ready-to-eat (RTE) food categories according to the risk food matrix given by Painset et al. (2019). Of these, 11 strains were provided by the European LISEQ collection (Painset et al., 2019) and the rest of food strains were extracted from the ANSES Maisons-Alfort Laboratory for Food Safety collection of food isolates. The 10 major CCs circulating in secondary and tertiary food production were previously determined from two previous French studies (Maury et al., 2016; Felix et al., 2018) and one conducted in Europe (Painset et al., 2019). At least four strains collected from four different European countries and from as many STs as possible were selected within CC in order to maximize the genetic diversity (**Supplementary Table 1**).

<sup>1</sup><https://onehealthjp.eu/jrp-listadapt/>

## Survival of Strains in Soil Microcosms

Soil was collected from the upper superficial tillage layer at a depth of 0–10 cm in a field located in an experimental farm unit of INRAE (Bretenière, France). It is a silty clay soil containing 38% clay, 56% silt and 6% sand, with a pH of 6.9. Soil was sieved to 4 mm within 24 h after sampling then stored at  $-20^{\circ}\text{C}$  for less than 1 month until use. Soil microcosms were prepared in 24-well microtiter plates by adding 0.5 g (equivalent dry weight) of soil per well. Plates were incubated 24 h at  $25^{\circ}\text{C}$  prior inoculation. Inocula were prepared from frozen stocks, by culturing in 10 mL of Tryptone Soy Broth for 24 h at  $25^{\circ}\text{C}$ , then by sub-culturing (1%v/v) for 16 h under the same incubation conditions. Cells were washed twice in sterile distilled water then the final cell density was adjusted in sterile distilled water in order to inoculate microcosms at  $10^6$  CFU/g dry soil. The total volume of inoculum was calculated in order to adjust the soil water content to 60% of its Water Holding Capacity. Inoculated microcosms were incubated 36 h at  $25^{\circ}\text{C}$ . After incubation, 5 mL of Tryptone salt were added per soil microcosms. Soil slurries were serially diluted and *Lm* populations were enumerated on Rapid<sup>®</sup>L mono (incubation 24–48 h at  $37^{\circ}\text{C}$ ). The absence of indigenous *Lm* in soil was checked by direct plating on Rapid<sup>®</sup>L mono before inoculation. Experiments were performed in triplicates.

## Correlation Between Strain Origin and Soil Fitness

The strains were clustered based on their survival rate using the *hclust* R function (version 3.6.1) with the complete linkage

method for hierarchical clustering. Ordinal logistic regression was used to explore the link between the strain ability to survive in soil and its origin. The *polr* R function was used to carry out the ordinal logistic regression.

## Genome Sequencing

The sequenced genomes were produced using paired-end sequencing ( $2 \times 150$  bp) on different Illumina instruments (NovaSeq 6000/NextSeq 500/Illumina HiSeq 2500). The raw reads were processed using the harmonized in-house workflow ARTWork.<sup>2</sup> This pipeline performs various analyses (*de novo* assembly, scaffolding, annotation, quality control, inter- and intra-species contamination) that have been described in detail in previous studies (Vila Nova et al., 2019; Palma et al., 2020). Genome with a mean coverage  $< 30\times$  and scaffolds with a length  $< 200$  bp were excluded. A cut-off for assembly was set at 200 contigs and an assembly length outside 2.7–3.2 Mbp. Sequence type (ST) and CC were also predicted based on the *Listeria Multilocus ST (MLST)* scheme (Moura et al., 2016). The accession numbers, the associated metadata and the metrics of the genome assemblies are provided in **Supplementary Table 1**.

## Phylogenomic Reconstruction of the Population Structure

Prediction of SNPs-Indels was performed using the Ivarcall2 pipeline (Felten et al., 2017) for alignment of the reads against the reference genome of *Lm* EGD-e (NC\_003210.1). The

<sup>2</sup><https://github.com/afelten-Anses/ARTWORK>

**TABLE 1** | Distribution of the 216 fully sequenced *Listeria monocytogenes* strains according to their origin, Lineage and clonal complex.

		Lineage I	Lineage II
Compartment	Sub-compartment	CC	CC
Food	Dairy product	CC1 ( $n = 4$ ), CC4 ( $n = 4$ ), CC6 ( $n = 4$ ) CC2 ( $n = 1$ ), CC217 ( $n = 1$ )	CC7 ( $n = 4$ ), CC37 ( $n = 2$ ), CC21 ( $n = 3$ )
	Fish product	CC2 ( $n = 5$ ), CC6 ( $n = 3$ )	CC8 ( $n = 3$ ), CC9 ( $n = 5$ ), CC121 ( $n = 5$ ), CC155 ( $n = 4$ )
	Meat product	CC1 ( $n = 4$ ), CC2 ( $n = 4$ ), CC6 ( $n = 4$ )	CC8 ( $n = 4$ ), CC9 ( $n = 4$ ), CC121 ( $n = 4$ ), CC37 ( $n = 2$ )
	Vegetable and fruit product	CC1 ( $n = 3$ ), CC2 ( $n = 4$ ), CC6 ( $n = 6$ )	CC31 ( $n = 5$ ), CC37 ( $n = 3$ ), CC121 ( $n = 4$ )
Environment	Environment	CC1 ( $n = 4$ ), CC2 ( $n = 2$ ), CC4 ( $n = 5$ ), CC5 ( $n = 1$ ), CC6 ( $n = 3$ ), CC54 ( $n = 1$ ) CC77 ( $n = 1$ ), CC220 ( $n = 1$ ), ST663 ( $n = 1$ ), ST666 ( $n = 1$ )	CC7 ( $n = 2$ ), CC8 ( $n = 5$ ), CC9 ( $n = 1$ ), CC11 ( $n = 4$ ), CC14 ( $n = 1$ ), CC18 ( $n = 4$ ), CC20 ( $n = 1$ ), CC21 ( $n = 2$ ), CC29 ( $n = 1$ ), CC37 ( $n = 2$ ), CC121 ( $n = 2$ ), CC155 ( $n = 1$ ), CC475 ( $n = 1$ ), CC26 ( $n = 1$ )
Animal	Farm animal	CC1 ( $n = 3$ ), CC2 ( $n = 1$ ), CC5 ( $n = 2$ ), CC6 ( $n = 1$ ), CC54 ( $n = 2$ ), CC59 ( $n = 1$ ), CC77 ( $n = 2$ ), CC220 ( $n = 1$ ), CC224 ( $n = 3$ ), CC315 ( $n = 2$ ), CC379 ( $n = 1$ )	CC7 ( $n = 1$ ), CC8 ( $n = 1$ ), CC9 ( $n = 2$ ), CC11 ( $n = 3$ ), CC14 ( $n = 1$ ), CC18 ( $n = 1$ ), CC20 ( $n = 2$ ), CC26 ( $n = 1$ ), CC29 ( $n = 1$ ), ST36 ( $n = 2$ ), CC37 ( $n = 2$ ), CC412 ( $n = 2$ )
	Wild animal	CC1 ( $n = 2$ ), CC4 ( $n = 2$ ), CC6 ( $n = 1$ ) CC59 ( $n = 2$ ), CC220 ( $n = 1$ ), CC315 ( $n = 1$ )	CC7 ( $n = 2$ ), CC8 ( $n = 1$ ), CC9 ( $n = 1$ ), CC11 ( $n = 2$ ), CC14 ( $n = 3$ ), CC18 ( $n = 1$ ), CC21 ( $n = 3$ ), CC26 ( $n = 1$ ), CC29 ( $n = 1$ ), CC31 ( $n = 1$ ), CC37 ( $n = 1$ ), CC121 ( $n = 2$ ), CC412 ( $n = 1$ ), CC415 ( $n = 1$ ), ST184 ( $n = 1$ )
Total		95	121

phylogenetic tree was calculated on the pseudogenome based on genomic distance using *iqtree* V.1.6.9 (Schmidt et al., 2014). The best-fitted model for this dataset was determined to be a three-substitution type model with equal base parameter, empirical base frequencies (Kimura, 1981) and allowed proportion of invariant site (K3P + F + I). The tree was corrected for homologous recombination events using *ClonalFrame* (Didelot and Wilson, 2015). The genome of the *L. innocua* strain FR-FAR-WT-170 was used as outgroup to root the tree. The final recombination aware tree was visualized using *iTOL* (Letunic and Bork, 2019).

## K-mer Based Genome-Wide-Association-Study

First, variable length K-mers were counted on all genomes using *fsm-lite* software with default parameters.<sup>3</sup> The GWAS was then performed on the strain survival rate treated as a continuous trait using *pyseer* software (V.1.3.4) K-mer association study was applied on the full dataset (216 genomes) and three subsets including genomes from lineage I ( $n = 95$ ), lineage II ( $n = 121$ ) and genomes belonging to CC6 ( $n = 22$ ).

Briefly, *ClonalFrame* inference (phylogeny tree) was used to generate a strain similarity matrix, based on the random effect model (*phylogeny\_distance.py* script). The significance of the associations was determined according to their Bonferroni corrected  $p$ -value using the script *count\_pattern.py* provided in the *pyseer* package: (i) full dataset  $p$ -value <  $3.09 \times 10^{-8}$  (ii) Lineage I  $p$ -value <  $1.92 \times 10^{-7}$  (iii) Lineage II  $p$ -value <  $9.84 \times 10^{-8}$  (iv) CC6  $p$ -value <  $9.00 \times 10^{-3}$ . K-mers significantly associated with soil fitness were then annotated on the reference genomes presenting the highest number of k-mers: LV-BOV\_CP\_29 for the whole collection (22/24) and the lineage II (2,148/2,242), DE-RDE-FE-17 for the lineage I (74/162) and FR-FI-U-UN-418 for the CC6 (2,243/3,056) (*annotate\_hits\_pyseer* script). The average maximum allele frequency (MAF) was determined by *pyseer* for each genes identified (**Supplementary Table 2**). The gene function was confirmed by BLAST analysis on the NCBI database.<sup>4</sup> The PHASTER web server was used for the rapid identification of prophage sequences<sup>5</sup> (Arndt et al., 2016, 2019).

## Correlation Between Phylogeny and Soil Fitness

In order to assess the association of soil phenotypes along the branches of the phylogenetic tree, the Bayesian inference method (Ansari and Didelot, 2016) was applied. The R package *TreeBreaker* was used in order to infer the evolution of a discrete phenotype distribution across a phylogenetic tree and to divide the tree into segments where their distributions are constant (Ansari and Didelot, 2016). Therefore, the core genome excluding recombination events and the discrete phenotypic traits (“fast” = 0, “slow” = 1) were supplied as input to this program.

<sup>3</sup><https://github.com/nvalimak/fsm-lite>

<sup>4</sup><https://www.ncbi.nlm.nih.gov/>

<sup>5</sup><https://phaster.ca/>

## RESULTS

### Survival Rate of 216 Lm Strains in Soil

The fate of the 216 strains was investigated during incubation in soil. The results were strain-dependent. Survival ranged from zero to 22% (**Figure 1** and **Supplementary Table 1**). Hierarchical clustering grouped the strains into three discrete phenotypes, i.e., “poor,” “moderate,” and “good” according to their percent of survival in soil (**Figure 1**). For 54.4% of the strains, less than 2% of the initial population was detected after 36 h of incubation in soil (“poor survivors” = phenotype 1) and 36 strains had a survival rate of zero. Of these 36 strains, 12 were isolated from animal, 15 from food and 9 from environment. Thirty percent of the strains had survival rates between 2 and 5%. (“moderate survivors” = phenotype 2). A minority of strains (15.6%) had survival rates over 5% (“good survivors” = phenotype 3). The strain LV-BOV-CP-29 (CC11, Lineage II) isolated from animal presented the highest survival rate in soil.

Ordinal logistic regression of the phenotypes observed of the 216 strains was performed in order to investigate possible correlations between the phenotype and the origin of the strains. No significant correlation between the three ordered phenotypes characterizing strain’s potential to survive in soil and strain’s origin could be evidenced (**Figure 2**). Survival in soil does not depend of strain’s origin.

### Correlation Between Phylogeny and Soil Fitness

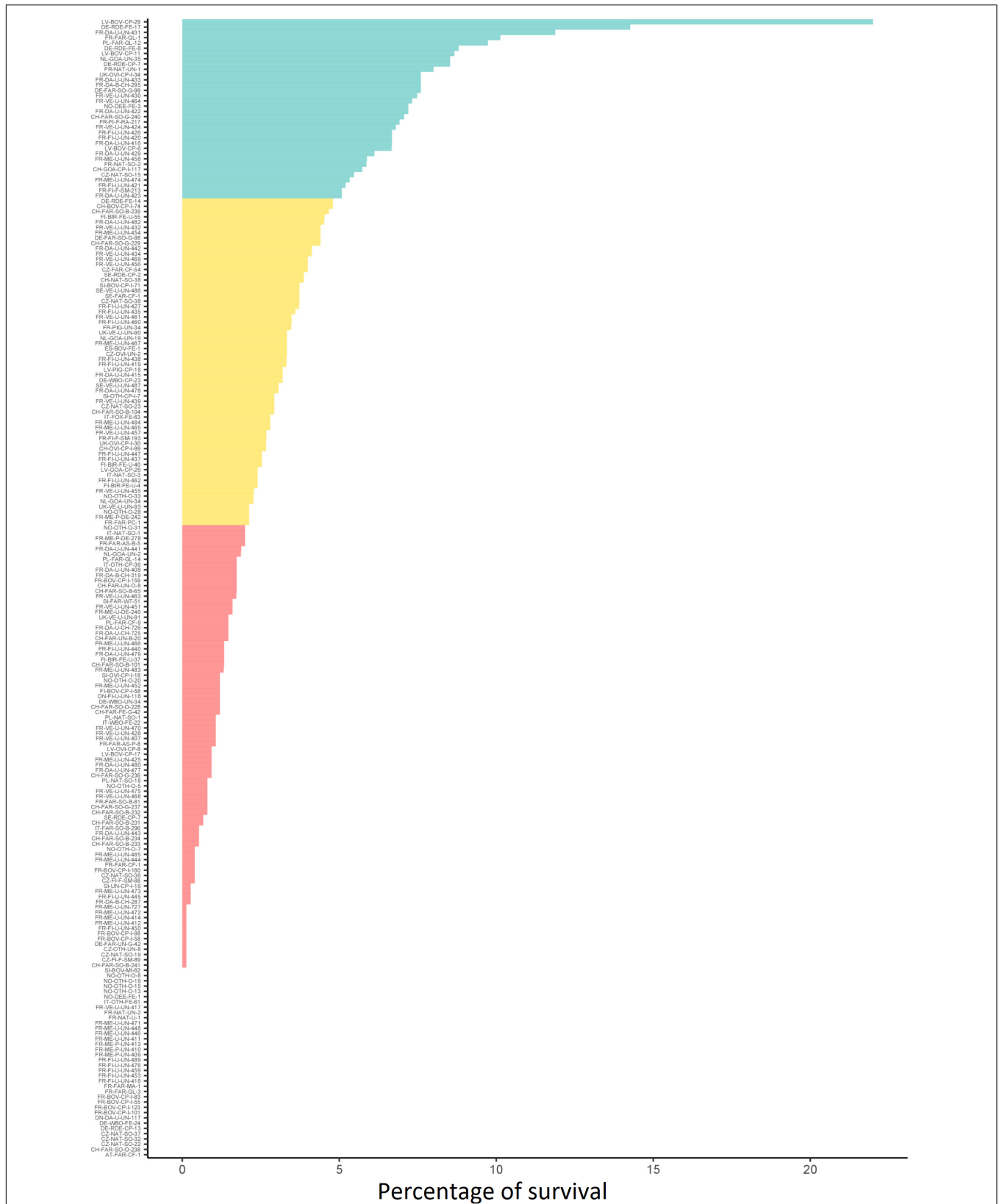
The distribution of the observed phenotypes within the phylogenetic tree based on the core genomes is presented in **Figure 3**. The three classes of phenotypes are randomly distributed on the tree leaves and analysis using Bayesian inference showed no trend. In addition, the posterior probabilities of phenotype changes on given branches (corresponding to Lineages, CC or any other clades) are not significant (**Supplementary Figure 1**). Survival in soil does not depend of the phylogenetic position of strains.

### Genome-Wide Association Study

The details of each gene and the number of significant k-mers associated with soil fitness are available in **Supplementary Table 2**.

### Genes Associated With Soil Fitness in the Full Dataset (216 Genomes)

Twenty-four k-mers, located in 11 genes, were associated with soil fitness (**Figure 4** and **Supplementary Table 2**) with twenty two k-mers detected in the genome of strain LV-BOV-CP-29 (Strain presenting the highest survival rate 22% survival rate, lineage II, CC11). These 11 genes were present in few genomes (between three and six depending on the k-mer) with an average maximum allele frequency (MAF) between 0.014 and 0.0279. Interestingly, these genes were significantly associated with soil fitness specifically in Lineage II strains (**Figure 4** and **Supplementary Table 2**).



**FIGURE 1 |** Soil survival phenotype of 216 strains tested. The three phenotypic classes of strain ability to survive in soil (blue = “good,” orange = “moderate” and red = “poor”) were determined by ascending hierarchical clustering.

Among the 11 genes identified, nine were significantly associated with high soil survival: the *whiB* gene, detected only in the best soil survivor strain (LV-BOV-CP-29) coding for a transcriptional regulator (Zheng et al., 2012) and eight genes annotated as prophage elements (**Supplementary Table 2**). Blast analysis of the LV-BOV-CP-29 genome revealed that these eight genes belong to a 38 Kb prophage integrated in the tRNA-Arg locus which shared 91% identity and 79% coverage with the listeria phage LP-101 (NC\_024387.1) (Denes et al., 2014).

Additionally, two genes were significantly associated with poor soil survival: The *rpoC* gene codes for the beta subunit of the DNA-directed RNA polymerase and has been linked to resistance to cephalosporin and the *HCFLCJGM\_00555* gene encodes a hypothetical protein (**Supplementary Table 2**).

### Genes Associated With Soil Fitness in Lineage I Strains (95 Genomes)

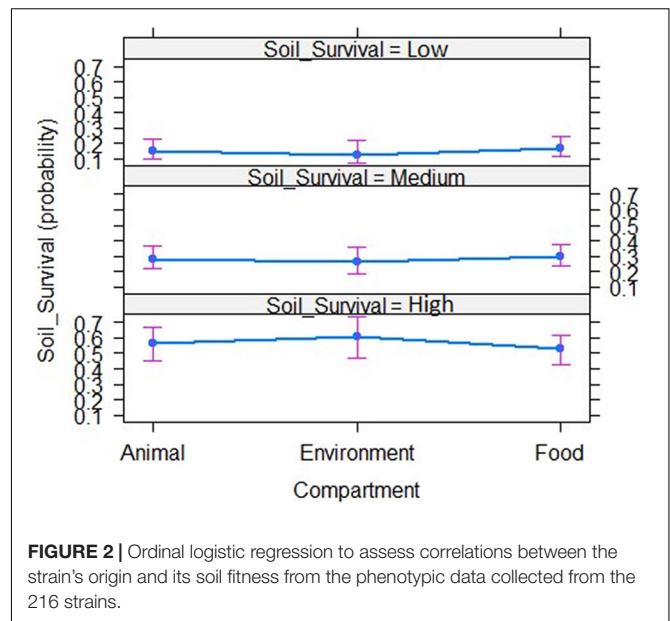
In lineage I, 162 k-mers covering 32 genes and presenting a low average MAF (between 0.02 and 0.07) were significantly associated with soil fitness (**Figure 5** and **Supplementary Table 2**). Out of the 32 genes, 11 encode hypothetical proteins, four are transcription regulators including two regulators of stress response (PerR and SrlR), four genes are linked to *Listeria monocytogenes* motility (**Figure 5** and **Supplementary Table 2**). Five genes coding membrane proteins were also identified, including four internalins (inlA, inlJ and two putative internalines) and two ABC transporters. Five genes belong to metabolism: Two of them are linked to resistance to oxidation (*msrA* and *yqhD*), two to cyanoamino acid metabolism (*gmuD\_1* and *gmuD\_2*) and one related to fructose metabolism (*mall\_2*). Finally, significant variation was identified in a putative anti-bacterial toxin gene. These 32 genes were not identified in the full dataset of 216 genomes (**Figure 5**).

For four genes (*msrA*, *IEOCHNDG\_01235*, *gpx1* and *mall\_2*) 88 k-mers detected were found in the genome of strains presenting poor soil survival. The 28 remaining genes were associated with high soil survival (**Supplementary Table 2**).

### Genes Associated With Soil Fitness in Lineage II (121 Genomes)

In lineage II, 2,243 k-mers covering 63 genes and 6 intergenic regions (**Figure 5**) were significantly associated with soil fitness. Most of these genes presented a low MAF (between 0.017 and 0.5 with only six genes presenting a MAF value above 0.1). 29 genes coding for phage elements (38 kb phage of LV-BOV-CP-29), 13 regulation factors (including three linked to stress resistance: *perR*, *srlR*, and *ctsR*), 12 stress resistance genes, 4 membrane proteins and the *ackA* gene associated with motility were detected. Notably, four of these genes (*perR*, *cwlK*, *lytC*, *nagA*) code for proteins involved in membrane metabolism or organization, especially in connection with growth promotion and stress induced membrane rearrangement.

The 69 genes detected for the lineage II include all the genes identified on the full dataset except *HCFLCJGM\_01110* (**Figure 5**) and four genes, *srlR* (coding a gluticol operon repressor), *perR* (coding a protein associated with peroxide resistance), *iap* (coding a secreted endopeptidase) and *ycaD* (coding a putative MFS transporter) also detected in lineage I.



**FIGURE 2 |** Ordinal logistic regression to assess correlations between the strain's origin and its soil fitness from the phenotypic data collected from the 216 strains.

For 57 genes, 95% of the k-mers identified were linked to high soil survival. For 12 genes, 94 k-mers were associated with poor soil survival. Among them, 43 k-mers were found in the gene *HCFLCJGM\_00555* and the intergenic region upstream this gene as well as 20 k-mers located in the *msmE* gene coding for an ABC transporter (**Supplementary Table 2**).

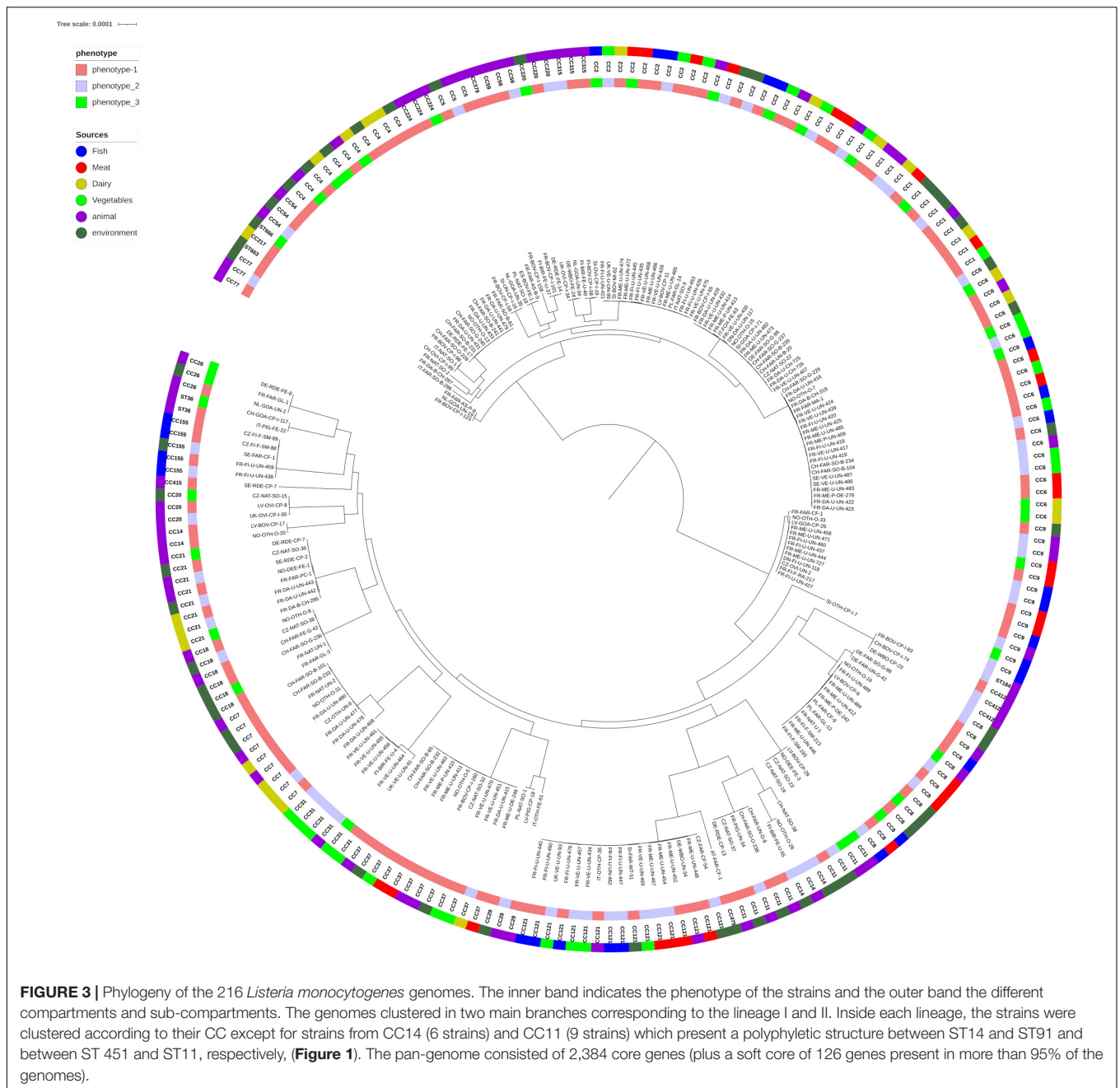
### Genes Associated With Poor Soil Fitness in CC6 (Lineage I) (22 Genomes)

3,056 k-mers were identified as significantly associated with soil fitness in strains from CC6. These k-mers were located in 41 genes and 1 intergenic region (**Supplementary Table 2**). The majority of k-mers (2,310/3,056) were located in seven genes. *Prokka\_01766* is annotated as a pseudo gene corresponding to an HTH domain containing protein (706 k-mers). The *ycaD* gene is a putative MFS-transporter and a major salt resistance facilitator (457 k-mers). *Prokka\_01773* was annotated as a hypothetical protein (449 k-mers). *ActA* (189 k-mers) is coding a virulence factor. *YlxH* codes a flagellum site determining protein (172 k-mers). *NemR* codes a transcriptional regulator of the bile resistance efflux pump (170 k-mers). Finally, three genes (*Prokka\_01769*, *Prokka\_01773* and *Prokka\_01774* encodes putative internalinprotein (81, 420, and 167 k-mers, respectively).

Most of the k-mers (2,242/3,056) were linked to poor soil survival. Seventeen prophage related genes were associated with poor soil fitness, of which five were related to phage LP-030-3 (NC\_024384.1) (**Supplementary Table 2**). These five genes were detected in seven CC6 strains with poor soil survival and were also identified in other CCs that presented poor soil fitness such as CC7 strains (6/7 strains) and CC121 strains (11/18 strains).

## DISCUSSION

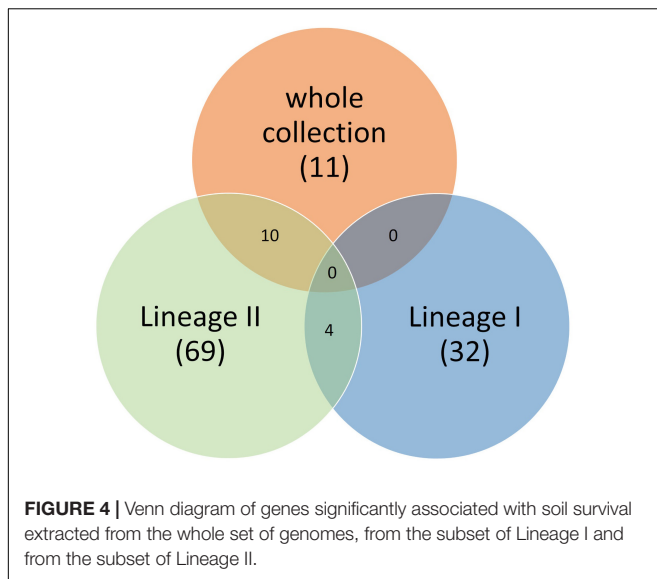
Because little information is currently available on the fate of the various Clonal Complexes under conditions relevant to outdoor



environments, we designed experiments on a panel of 216 strains representative of the overall genetic diversity and sources of *Lm* (natural environments, farm environments, wildlife, farm animals, food). The most prevalent CCs detected in an aggregated collection of outdoor environment strains were included in the panel of strains (Felix et al., 2018; Painset et al., 2019; Papić et al., 2019). Similarly, strains representative of the genetic diversity of *Lm* found in food were selected among the 10 most prevalent CCs found in 4 different food categories (Painset et al., 2019). To our knowledge, this is the first in-depth comparative investigation of a comprehensive collection of *Lm* strains grouping a balanced number of food and outdoor environment strains.

Survival in soil was used as proxy for the fitness of *Lm* in outdoor environments. Soil is a complex and heterogeneous environment in which bacteria may encounter a range of harsh conditions. Upon its arrival in soil, *Lm* has to face competition for resources and antibiosis depending on the characteristics and diversity of the soil microbiome (McLaughlin et al., 2011; Vivant et al., 2013; Bruce et al., 2017; Smith et al., 2018; Spor et al., 2020) and prophage infection (Williamson et al., 2007; Srinivasiah et al., 2008). Similarly, abiotic stress (nutrient starvation, temperature, osmotic variations and heavy metal exposure) may occur in soil (Oliver, 2010; Smith et al., 2018). Soil fitness is likely to require the contribution of a large array of genomic factors as suggested by





deep transcriptome variations upon arrival of *Lm* in soil (Piveteau et al., 2011; Vivant et al., 2015).

In this strain panel, “poor” soil survivors were present in every CC, and no CC was strongly associated with “good” soil fitness. Information on the variability of *Lm* fitness in soil is scarce. However, a previous study suggested that survival in soil is strain-dependent (McLaughlin et al., 2011). In a longitudinal survey of farms and natural environments in North America, one genotype (Lineage II-Ribotype DUP-1039C) was significantly associated with both natural environments and farms (Sauders et al., 2006). This ribotype actually groups CC9, CC14, CC204, CC368, and CC436. However, in our study, the strains from CC9 and CC14 did not present higher survival rates in soil than strains from the other CCs of the dataset.

The panel of 216 genomes representative of *Lm* strains found in soil, animals and food was analyzed in order to obtain insight into the genetic determinants of *Lm* fitness in soil. We used genome-wide-association-studies in order to identify genomic markers linked to a phenotype. These studies using linear mixed models are a powerful tool to capture small variations underlying phenotypic differences (San et al., 2020). In the present work, genomic features significantly associated with soil fitness were identified through association studies. Only 11 genes were associated to the soil fitness of the full dataset of 216 genomes. Our results confirm that soil fitness requires the contribution of several functions, and suggest that minor gene variations confer extra advantage when facing biotic and abiotic edaphic challenges. Strikingly, the number of gene variants found to be associated with survival in soil was greater in Lineage II strains (69) than in Lineage I strains (32). This is intriguing and calls for further investigations taking into account the evolutionary history of both Lineages.

While not detected in the dataset of 216 genomes, three transcription regulators associated with stress response were detected in both Lineages and were associated mostly with high soil fitness with only 6 hits out of 119 associated with poor

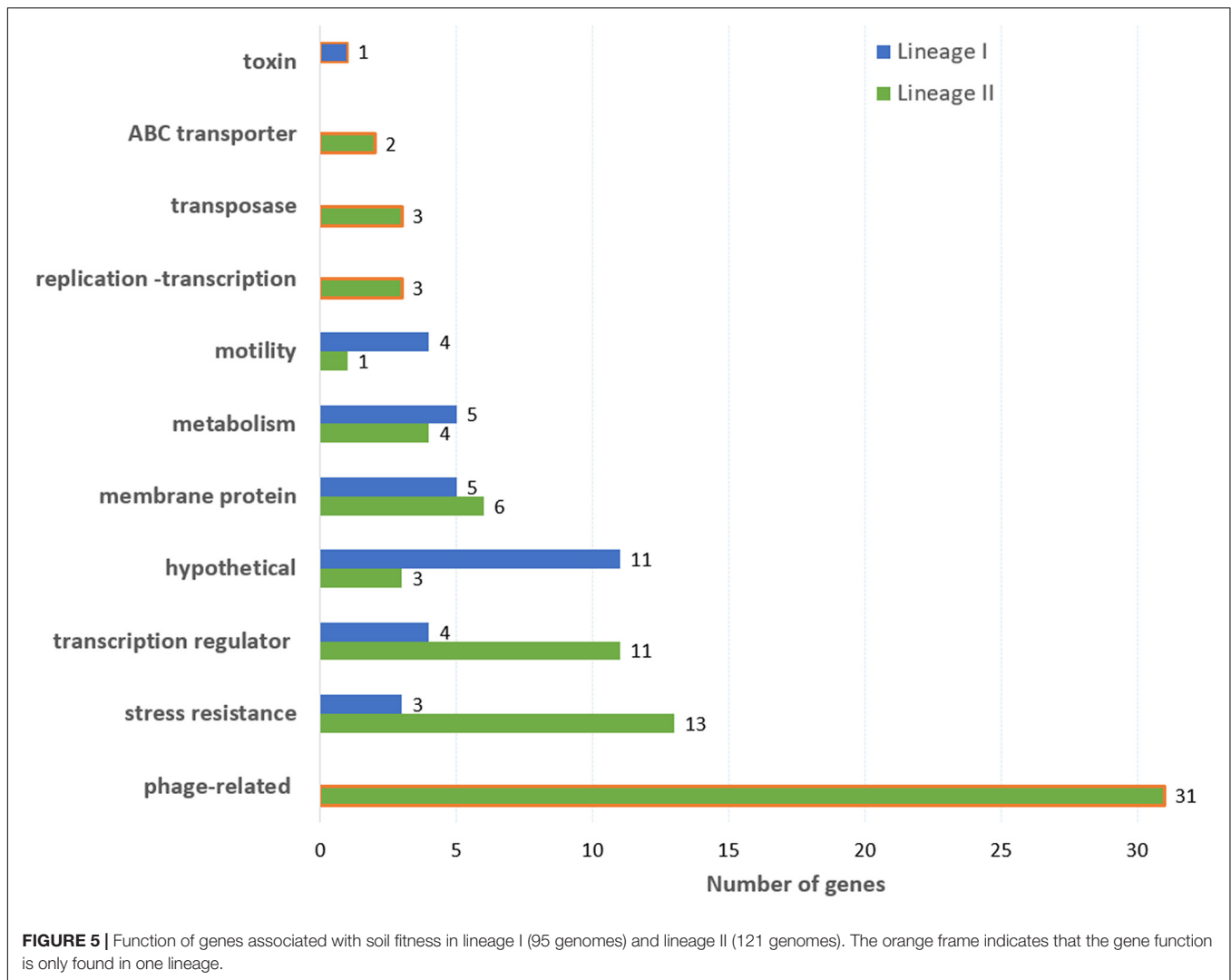
soil fitness. The *perR* gene codes a putative peroxidase stress response regulator involved in H<sub>2</sub>O<sub>2</sub> resistance and cell growth (Rea et al., 2005). The closely located *ycaD* gene, also linked to soil fitness in CC6 strains, codes a putative MFS transporter. This gene is known to be a major facilitator of salt resistance (Duché et al., 2002). Finally, *srlR* encodes a putative glucitol operon regulator involved in stress response as previously demonstrated for *Lactobacillus paracasei* (Palud et al., 2018). The variants of these genes were, however, different between Lineage I and II. This emphasizes how different genomic variations in key genes can induce similar effects.

In Lineage I and II alike, most of the variants connected to coping with environmental stresses were associated with transcription regulation, stress response, membrane protein and motility. As a feature of a ubiquitous bacterial species, a large percentage of the genome of *Lm* codes regulators (Glaser et al., 2001; den Bakker et al., 2013; Vivant et al., 2013). Response of *Lm* to the edaphic environmental factors requires transcription regulation and fine-tuning of gene expression (Piveteau et al., 2011; Vivant et al., 2015). In Lineage II strains, “good” soil fitness was linked to variations in the sequence of 11 transcription factors coding genes. Among these, *ctsR* encodes the class 3 stress gene repressor of *Lm* (Nair et al., 2000; Karatzas et al., 2003) and *ackA* is involved in chemotaxis and motility (Gueriri et al., 2008).

In Lineage I, *flaA* coding a flagelin and *cheV* involved in chemotaxis (Karatan et al., 2001) were associated with soil fitness. Likewise, in CC6 strains, multiple variants of *ylxH*, coding FlhF the protein involved in flagelin localization, were associated with high (46 k-mer) and poor (126 k-mer) soil fitness. The *ctsR* gene involved in flagellar transcription was associated with soil fitness in lineage II and in CC6 strains. Motility and chemotaxis associated genes are known to contribute to stress resistance in *Listeria* (Casey et al., 2014; Vivant et al., 2017) and are up-regulated in soil as a strategy to cope with harsh environments (Vivant et al., 2017).

Stress response is another important feature of the saprophytic lifestyle of *Lm* and the capacity to trigger the general stress response is required for survival in soil (Brunhede et al., 2020; Marinho et al., 2020). Our findings further support the importance of stress response in soil fitness. Interestingly, 13 stress resistance-coding genes in lineage II and five in lineage I were predicted to affect soil fitness. These genes include resistance to oxidative stress (*cysK*, *uvrC* in Lineage II; *msrA* and *yqhD* in Lineage I) (Duché et al., 2002; Hain et al., 2012; Liu et al., 2019; Patange et al., 2019) and resistance to antimicrobial agents (*folP* or *rpoC*) (Braschi et al., 2018; Wang et al., 2019). GWAS also highlighted significant associations with genes related to cell division and shape of the bacterial envelop. Altogether, these results show that the characteristics of the surface of the bacterium are a key feature of fitness in the edaphic environment, as differential transcriptome analysis suggested previously (Piveteau et al., 2011; Vivant et al., 2017).

GWAS underlined variations in genes coding internalins and uncharacterized membrane proteins as well. Two Internalin genes, *inlJ* and *inlA* were associated to high soil survival in lineages I,II and CC6 while three putative internalins were linked to poor soil fitness in the CC6. Some internalins such as *inlL* and



*inlA* are involved in adherence and biofilm formation (Popowska et al., 2017) while the capacity to form biofilms improves soil survival (Salazar et al., 2013). Therefore, biofilm formation could be a decisive factor in soil survivability.

This study highlighted several phage-related genomic regions. In Lineage II strains, variations in the region of bacteriophage LP-101 correlated to soil fitness. Several genes from this phage region were detected, in particular a variant of *yqjO*. In *Bacillus subtilis* this gene codes a component of a defective prophage known to provide protection against other prophages (Klumpp and Loessner, 2013; Suzuki et al., 2020). It is likely that this prophage plays an important role in soil survival of Lineage II strains. On the contrary, 17 phage-related genes presented variations specifically associated with “poor” soil fitness in CC6 strains. Most of them were associated with LP-030-3, a prophage integrated in *comK*. In *Bacillus subtilis* *comK* codes the master regulator required for expression of late competence genes. In *Listeria monocytogenes*, functional ComK is involved in stress regulation and phagosomal escape (Chatterjee et al., 2006; Rabinovich et al., 2012). This region is considered a

rapid adaptation island because the mosaic structure of the *comK* prophage region enables rapid recombination (Verghese et al., 2011). In particular, excision of prophage A118 from the *comK* region restores expression of *ComK*, without entering the lytic phase (Rabinovich et al., 2012). Unfortunately, to date investigations on the role of LP-030-3-like prophages at this locus are lacking.

In this study, a panel of strains was built to cover the genomic diversity of *Lm* found in natural environments, animals and food. GWAS was performed on this panel in order to investigate the genomic features associated with the fitness of *Lm* in soil. Not surprisingly, fitness in this complex heterogeneous environment depends on the performance of a combination of several cellular processes. The synergy between several genomic variations could enhance the overall fitness of *Lm* clones among genetically related strains as well as between strains that are more distant. Several genomic variants of genes related to cell surface, transcription regulation and stress response were identified as significantly associated with soil fitness in our genetically diverse panel of *Lm* strains. This investigation also highlighted the importance

of prophages in soil fitness but effects were either beneficial or detrimental according to the nature of the phage.

To gain a better understanding of the contributing effects of each of the genetic factors identified in this study, it would be of interest to investigate a larger genomic panel. It would then be possible to test the predictive power of these factors possibly by applying machine learning. The more promising factors could then be investigated by transcriptome analysis and reverse genetics.

## DATA AVAILABILITY STATEMENT

The datasets presented in this study can be found in online repositories. The names of the repository/repositories and accession number(s) can be found in the article/**Supplementary Material**.

## AUTHOR CONTRIBUTIONS

YS contributed substantially to the study design, acquisition of strains and the corresponding genomes, data analysis, quality control of the genomic dataset as well as writing and editing the manuscript. EA was in charge of all to the phenotypic experiments and contributed to writing and revision of the manuscript. P-ED contributed substantially to the data analysis, as well as writing and editing the manuscript. BF contributed to the acquisition and selection of strains. LGa and DG contributed to the design and analysis of the phenotypic experiments. LGu was in charge of statistical analysis, selection of strains for sequencing and helped in drafting the manuscript. PP participated in the study design, provided strains from soil and designed and coordinated the study, and contributed to writing and editing of the manuscript. SR designed and coordinated the study and contributed to writing and editing of the manuscript. All authors read and approved the final manuscript.

## REFERENCES

- Ansari, M. A., and Didelot, X. (2016). Bayesian Inference of the Evolution of a Phenotype Distribution on a Phylogenetic Tree. *Genetics* 204, 89–98. doi: 10.1534/genetics.116.190496
- Arndt, D., Grant, J. R., Marcu, A., Sajed, T., Pon, A., Liang, Y., et al. (2016). PHASTER: a better, faster version of the PHAST phage search tool. *Nucleic Acids Res.* 44, W16–W21. doi: 10.1093/nar/gkw387
- Arndt, D., Marcu, A., Liang, Y., and Wishart, D. S. (2019). PHAST, PHASTER and PHASTEST: tools for finding prophage in bacterial genomes. *Brief. Bioinform.* 20, 1560–1567. doi: 10.1093/bib/bbx121
- Braschi, G., Serrazanetti, D. I., Siroli, L., Patrignani, F., De Angelis, M., and Lanciotti, R. (2018). Gene expression responses of *Listeria monocytogenes* Scott A exposed to sub-lethal concentrations of natural antimicrobials. *Int. J. Food Microbiol.* 286, 170–178. doi: 10.1016/j.ijfoodmicro.2018.07.026
- Bruce, J. B., West, S. A., and Griffin, A. S. (2017). Bacteriocins and the assembly of natural *Pseudomonas fluorescens* populations. *J. Evol. Biol.* 30, 352–360. doi: 10.1111/jeb.13010
- Brunhede, M. Z., Santos, P. T. D., Gal, L., Garmyn, D., Kallipolitis, B. H., and Piveteau, P. (2020). LisRK is required for optimal fitness of *Listeria monocytogenes* in soil. *FEMS Microbiol. Lett.* 367:fnaa188. doi: 10.1093/fems/lnaa188

## FUNDING

This work was supported by the One Health European Joint Programme-European Union's Horizon 2020 Research and Innovation Programme (Grant Agreement No. 773830).

## ACKNOWLEDGMENTS

We thank Dr. Anna Oeverman (Department of Clinical Research and Veterinary Public Health, Vetsuisse Faculty, University of Bern, Switzerland) for providing 34 strains, isolated from a ruminant farm environment. We also thank Dr. Bojan Papic (Institute of Microbiology and Parasitology, Veterinary Faculty, University of Ljubljana, Slovenia) for providing 12 strains, isolated from farm animal autopsies and soil and six strains, isolated from farm or wild animal autopsies. We also thank Karol Romero and Karine Capitaine from ANSES, Laboratory for Food Safety, SEL Unit, responsible for sequencing of a substantial part of the strains, in collaboration with the Brain and Spine Institute sequencing platform.

## SUPPLEMENTARY MATERIAL

The Supplementary Material for this article can be found online at: <https://www.frontiersin.org/articles/10.3389/fmicb.2022.917588/full#supplementary-material>

**Supplementary Figure 1** | Evolution of a discrete soil phenotype distribution blue dot = "good," orange dot = "moderate" and red dot = "poor" on a phylogenetic tree including the genomes of 216 *Listeria monocytogenes* strains. The thickness of the branches is proportional to the posterior probability of having a change point. No change point was identified by treeBreaker. This shows that the three classes of phenotypes are randomly distributed on the tree leaves. The Bayesian inference method showed no steadiness distribution of phenotypes.

**Supplementary Table 1** | Characteristics of the strain dataset.

- Cantinelli, T., Chenal-Francisque, V., Diancourt, L., Frezal, L., Leclercq, A., Wirth, T., et al. (2013). "Epidemic clones" of *Listeria monocytogenes* are widespread and ancient clonal groups. *J. Clin. Microbiol.* 51, 3770–3779. doi: 10.1128/JCM.01874-13
- Casey, A., Fox, E. M., Schmitz-Esser, S., Coffey, A., McAuliffe, O., and Jordan, K. (2014). Transcriptome analysis of *Listeria monocytogenes* exposed to biocidal stress reveals a multi-system response involving cell wall synthesis, sugar uptake, and motility. *Front. Microbiol.* 5:68. doi: 10.3389/fmicb.2014.00068
- Castro, H., Douillard, F. P., Korkeala, H., and Lindstrom, M. (2021). Mobile Elements Harboring Heavy Metal and Bacitracin Resistance Genes Are Common among *Listeria monocytogenes* Strains Persisting on Dairy Farms. *mSphere* 6:e0038321. doi: 10.1128/mSphere.00383-21
- Chatterjee, S. S., Hossain, H., Otten, S., Kuenne, C., Kuchmina, K., Machata, S., et al. (2006). Intracellular gene expression profile of *Listeria monocytogenes*. *Infect. Immun.* 74, 1323–1338. doi: 10.1128/IAI.74.2.1323-1338.2006
- Chenal-Francisque, V., Lopez, J., Cantinelli, T., Caro, V., Tran, C., Leclercq, A., et al. (2011). Worldwide distribution of major clones of *Listeria monocytogenes*. *Emerg. Infect. Dis.* 17, 1110–1112. doi: 10.3201/eid1706.101778
- den Bakker, H. C., Desjardins, C. A., Griggs, A. D., Peters, J. E., Zeng, Q., Young, S. K., et al. (2013). Evolutionary Dynamics of the Accessory Genome of *Listeria monocytogenes*. *PLoS One* 8:e67511. doi: 10.1371/journal.pone.0067511

- Denes, T., Vongkamjan, K., Ackermann, H. W., Moreno Switt, A. I., Wiedmann, M., and den Bakker, H. C. (2014). Comparative genomic and morphological analyses of *Listeria* phages isolated from farm environments. *Appl. Environ. Microbiol.* 80, 4616–4625. doi: 10.1128/AEM.00720-14
- Didelot, X., and Wilson, D. J. (2015). ClonalFrameML: efficient Inference of Recombination in Whole Bacterial Genomes. *PLoS Comput. Biol.* 11:e1004041. doi: 10.1371/journal.pcbi.1004041
- Dreyer, M., Aguilar-Bultet, L., Rupp, S., Guldemann, C., Stephan, R., Schock, A., et al. (2016). *Listeria monocytogenes* sequence type 1 is predominant in ruminant rhombencephalitis. *Sci. Rep.* 6:36419. doi: 10.1038/srep36419
- Duché, O., Trémoulet, F., Glaser, P., and Labadie, J. (2002). Salt stress proteins induced in *Listeria monocytogenes*. *Appl. Environ. Microbiol.* 68, 1491–1498. doi: 10.1128/aem.68.4.1491-1498.2002
- Felix, B., Feurer, C., Mailet, A., Guillier, L., Boscher, E., Kerouanton, A., et al. (2018). Population Genetic Structure of *Listeria monocytogenes* Strains Isolated From the Pig and Pork Production Chain in France. *Front. Microbiol.* 9:684. doi: 10.3389/fmicb.2018.00684
- Félix, B., Sevellec, Y., Palma, F., Douarre, P.-E., Felten, A., Radomski, N., et al. (2022). A European-wide dataset to decipher adaptation mechanisms of *Listeria monocytogenes* to diverse ecological niches. *Sci. Data* 9:190. doi: 10.1038/s41597-022-01278-6
- Felten, A., Vila Nova, M., Durimel, K., Guillier, L., Mistou, M.-Y., and Radomski, N. (2017). First gene-ontology enrichment analysis based on bacterial coregenome variants: insights into adaptations of *Salmonella serovars* to mammalian- and avian-hosts. *BMC Microbiol.* 17:222. doi: 10.1186/s12866-017-1132-1
- Fritsch, L., Felten, A., Palma, F., Mariet, J.-F., Radomski, N., Mistou, M.-Y., et al. (2019). Insights from genome-wide approaches to identify variants associated to phenotypes at pan-genome scale: application to *L. monocytogenes*' ability to grow in cold conditions. *Int. J. Food Microbiol.* 291, 181–188. doi: 10.1016/j.ijfoodmicro.2018.11.028
- Gismervik, K., Aspholm, M., Rorvik, L. M., Bruheim, T., Andersen, A., and Skaar, I. (2015). Invading slugs (*Arion vulgaris*) can be vectors for *Listeria monocytogenes*. *J. Appl. Microbiol.* 118, 809–816. doi: 10.1111/jam.12750
- Glaser, P., Frangeul, L., Buchrieser, C., Rusniok, C., Amend, A., Baquero, F., et al. (2001). Comparative genomics of *Listeria* species. *Science* 294, 849–852. doi: 10.1126/science.1063447
- Gueriri, I., Bay, S., Dubrac, S., Cyncynatus, C., and Msadek, T. (2008). The Pta-AckA pathway controlling acetyl phosphate levels and the phosphorylation state of the DegU orphan response regulator both play a role in regulating *Listeria monocytogenes* motility and chemotaxis. *Mol. Microbiol.* 70, 1342–1357. doi: 10.1111/j.1365-2958.2008.06496.x
- Haase, J. K., Didelot, X., Lecuit, M., Korkeala, H., and Achtman, M. (2014). The ubiquitous nature of *Listeria monocytogenes* clones: a large-scale Multilocus Sequence Typing study. *Environ. Microbiol.* 16, 405–416. doi: 10.1111/1462-2920.12342
- Hain, T., Ghai, R., Billion, A., Kuenne, C. T., Steinweg, C., Izar, B., et al. (2012). Comparative genomics and transcriptomics of lineages I, II, and III strains of *Listeria monocytogenes*. *BMC Genom.* 13:144. doi: 10.1186/1471-2164-13-144
- Hellstrom, S., Kiviniemi, K., Autio, T., and Korkeala, H. (2008). *Listeria monocytogenes* is common in wild birds in Helsinki region and genotypes are frequently similar with those found along the food chain. *J. Appl. Microbiol.* 104, 883–888. doi: 10.1111/j.1365-2672.2007.03604.x
- Henri, C., Felix, B., Guillier, L., Leekitcharoenphon, P., Michelon, D., Mariet, J. F., et al. (2016). Population Genetic Structure of *Listeria monocytogenes* Strains as Determined by Pulsed-Field Gel Electrophoresis and Multilocus Sequence Typing. *Appl. Environ. Microbiol.* 82, 5720–5728. doi: 10.1128/aem.00583-16
- Hingston, P., Chen, J., Dhillon, B. K., Laing, C., Bertelli, C., Gannon, V., et al. (2017). Genotypes Associated with *Listeria monocytogenes* Isolates Displaying Impaired or Enhanced Tolerances to Cold, Salt, Acid, or Desiccation Stress. *Front. Microbiol.* 8:369. doi: 10.3389/fmicb.2017.00369
- Hurtado, A., Ocejó, M., and Oporto, B. (2017). *Salmonella* spp. and *Listeria monocytogenes* shedding in domestic ruminants and characterization of potentially pathogenic strains. *Vet. Microbiol.* 210, 71–76. doi: 10.1016/j.vetmic.2017.09.003
- Hydeskov, H. B., Amar, C. F. L., Fernandez, J. R., John, S. K., Macgregor, S. K., Cunningham, A. A., et al. (2019). *Listeria Monocytogenes* Infection of Free-Living Western European Hedgehogs (*Erinaceus europaeus*). *J. Zoo Wildlife Med.* 50, 183–189. doi: 10.1638/2018-0093
- Kallipolitis, B., Gahan, C. G. M., and Piveteau, P. (2020). Factors contributing to *Listeria monocytogenes* transmission and impact on food safety. *Curr. Opin. Food Sci.* 36, 9–17. doi: 10.1016/j.cofs.2020.09.009
- Karatan, E., Saulmon, M. M., Bunn, M. W., and Ordal, G. W. (2001). Phosphorylation of the response regulator CheV is required for adaptation to attractants during *Bacillus subtilis* chemotaxis. *J. Biol. Chem.* 276, 43618–43626. doi: 10.1074/jbc.m104955200
- Karatzas, K. A., Wouters, J. A., Gahan, C. G., Hill, C., Abee, T., and Bennik, M. H. (2003). The CtsR regulator of *Listeria monocytogenes* contains a variant glycine repeat region that affects piezotolerance, stress resistance, motility and virulence. *Mol. Microbiol.* 49, 1227–1238. doi: 10.1046/j.1365-2958.2003.03636.x
- Kimura, M. (1981). Estimation of evolutionary distances between homologous nucleotide sequences. *Proc. Natl. Acad. Sci. U.S.A.* 78, 454–458. doi: 10.1073/pnas.78.1.454
- Klumpp, J., and Loessner, M. J. (2013). *Listeria* phages: genomes, evolution, and application. *Bacteriophage* 3:e26861. doi: 10.4161/bact.26861
- Letunic, I., and Bork, P. (2019). Interactive Tree Of Life (iTOL) v4: recent updates and new developments. *Nucleic Acids Res.* 47, W256–W259. doi: 10.1093/nar/gkz239
- Liu, Y., Orsi, R. H., Gaballa, A., Wiedmann, M., Boor, K. J., and Guariglia-Oropeza, V. (2019). Systematic review of the *Listeria monocytogenes*  $\sigma$ B regulon supports a role in stress response, virulence and metabolism. *Future Microbiol.* 14, 801–828. doi: 10.2217/fmb-2019-0072
- Mahoney, D. B. J., Falardeau, J., Hingston, P., Chmielowska, C., Carroll, L. M., Wiedmann, M., et al. (2022). Associations between *Listeria monocytogenes* genomic characteristics and adhesion to polystyrene at 8 degrees C. *Food Microbiol.* 102:103915. doi: 10.1016/j.fm.2021.103915
- Marinho, C. M., Garmyn, D., Gal, L., Brunhede, M. Z., O'Byrne, C., and Piveteau, P. (2020). Investigation of the roles of AgrA and  $\sigma$ B regulators in *Listeria monocytogenes* adaptation to roots and soil. *FEMS Microbiol. Lett.* 367:fnaa036. doi: 10.1093/femsle/fnaa036
- Maury, M. M., Tsai, Y. H., Charlier, C., Touchon, M., Chenal-Francois, V., Leclercq, A., et al. (2016). Uncovering *Listeria monocytogenes* hypervirulence by harnessing its biodiversity. *Nat. Genet.* 48, 308–313. doi: 10.1038/ng.3501
- McLaughlin, H. P., Casey, P. G., Cotter, J., Gahan, C. G., and Hill, C. (2011). Factors affecting survival of *Listeria monocytogenes* and *Listeria innocua* in soil samples. *Arch. Microbiol.* 193, 775–785. doi: 10.1007/s00203-011-0716-7
- Moura, A., Criscuolo, A., Pouseele, H., Maury, M. M., Leclercq, A., Tarr, C., et al. (2016). Whole genome-based population biology and epidemiological surveillance of *Listeria monocytogenes*. *Nat. Microbiol.* 2:16185. doi: 10.1038/nmicrobiol.2016.185
- Nair, S., Derré, I., Msadek, T., Gaillot, O., and Berche, P. (2000). CtsR controls class III heat shock gene expression in the human pathogen *Listeria monocytogenes*. *Mol. Microbiol.* 35, 800–811. doi: 10.1046/j.1365-2958.2000.01752.x
- Oliver, J. D. (2010). Recent findings on the viable but nonculturable state in pathogenic bacteria. *FEMS Microbiol. Rev.* 34, 415–425. doi: 10.1111/j.1574-6976.2009.00200.x
- Orsi, R. H., Bakker, H. C., and Wiedmann, M. (2011). *Listeria monocytogenes* lineages: genomics, evolution, ecology, and phenotypic characteristics. *Int. J. Med. Microbiol.* 301, 79–96. doi: 10.1016/j.ijmm.2010.05.002
- Painset, A., Björkman, J. T., Kiil, K., Guillier, L., Mariet, J.-F., Félix, B., et al. (2019). LiSEQ – whole-genome sequencing of a cross-sectional survey of *Listeria monocytogenes* in ready-to-eat foods and human clinical cases in Europe. *Microb. Genom.* 5:e000257. doi: 10.1099/mgen.0.000257
- Palma, F., Brauge, T., Radomski, N., Mallet, L., Felten, A., Mistou, M.-Y., et al. (2020). Dynamics of mobile genetic elements of *Listeria monocytogenes* persisting in ready-to-eat seafood processing plants in France. *BMC Genom.* 21:130. doi: 10.1186/s12864-020-6544-x
- Palud, A., Salem, K., Cavin, J.-F., Beney, L., and Licandro, H. (2018). Identification and expression of *Lactobacillus paracasei* genes for adaptation to desiccation and rehydration. *bioRxiv* [preprint]. doi: 10.1101/475830
- Papić, B., Pate, M., Félix, B., and Kušar, D. (2019). Genetic diversity of *Listeria monocytogenes* strains in ruminant abortion and rhombencephalitis cases in comparison with the natural environment. *BMC Microbiol.* 19:299. doi: 10.1186/s12866-019-1676-3
- Parsons, C., Niedermeyer, T., Gould, N., and Brown, P., Strules, J., Parsons, A. W., et al. (2019). *Listeria monocytogenes* at the human–wildlife interface: black

- bears (*Ursus americanus*) as potential vehicles for *Listeria*. *Microb. Biotechnol.* 13, 706–721. doi: 10.1111/1751-7915.13509
- Patange, A., O'Byrne, C., Boehm, D., Cullen, P. J., Keener, K., and Bourke, P. (2019). The Effect of Atmospheric Cold Plasma on Bacterial Stress Responses and Virulence Using *Listeria monocytogenes* Knockout Mutants. *Front. Microbiol.* 10:2841. doi: 10.3389/fmicb.2019.02841
- Piveteau, P., Depret, G., Pivato, B., Garmyn, D., and Hartmann, A. (2011). Changes in gene expression during adaptation of *Listeria monocytogenes* to the soil environment. *PLoS One* 6:e24881. doi: 10.1371/journal.pone.0024881
- Popowska, M., Krawczyk-Balska, A., Ostrowski, R., and Desvaux, M. (2017). InL from *Listeria monocytogenes* Is Involved in Biofilm Formation and Adhesion to Mucin. *Front. Microbiol.* 8:660. doi: 10.3389/fmicb.2017.00660
- Rabinovich, L., Sigal, N., Borovok, I., Nir-Paz, R., and Herskovits, A. A. (2012). Prophage excision activates *Listeria* competence genes that promote phagosomal escape and virulence. *Cell* 150, 792–802. doi: 10.1016/j.cell.2012.06.036
- Ragon, M., Wirth, T., Hollandt, F., Lavenir, R., Lecuit, M., Le Monnier, A., et al. (2008). A new perspective on *Listeria monocytogenes* evolution. *PLoS Pathog.* 4:e1000146. doi: 10.1371/journal.ppat.1000146
- Rea, R., Hill, C., and Gahan, C. G. M. (2005). *Listeria monocytogenes* PerR mutants display a small-colony phenotype, increased sensitivity to hydrogen peroxide, and significantly reduced murine virulence. *Appl. Environ. Microbiol.* 71, 8314–8322. doi: 10.1128/AEM.71.12.8314-8322.2005
- Salazar, J. K., Wu, Z., Yang, W., Freitag, N. E., Tortorello, M. L., Wang, H., et al. (2013). Roles of a Novel Crp/Fnr Family Transcription Factor Lmo0753 in Soil Survival, Biofilm Production and Surface Attachment to Fresh Produce of *Listeria monocytogenes*. *PLoS One* 8:e75736. doi: 10.1371/journal.pone.0075736
- San, J. E., Baichoo, S., Kanzi, A., Moosa, Y., Lessells, R., Fonseca, V., et al. (2020). Current Affairs of Microbial Genome-Wide Association Studies: approaches, Bottlenecks and Analytical Pitfalls. *Front. Microbiol.* 10:3119. doi: 10.3389/fmicb.2019.03119
- Sauders, B. D., Durak, M. Z., Fortes, E., Windham, K., Schukken, Y., Lembo, A. J. Jr., et al. (2006). Molecular characterization of *Listeria monocytogenes* from natural and urban environments. *J. Food Protect.* 69, 93–105. doi: 10.4315/0362-028x-69.1.93
- Schmidt, H. A., Minh, B. Q., von Haeseler, A., and Nguyen, L.-T. (2014). IQ-TREE: a Fast and Effective Stochastic Algorithm for Estimating Maximum-Likelihood Phylogenies. *Mol. Biol. Evol.* 32, 268–274. doi: 10.1093/molbev/msu300
- Smith, A., Moorhouse, E., Monaghan, J., Taylor, C., and Singleton, I. (2018). Sources and survival of *Listeria monocytogenes* on fresh, leafy produce. *J. Appl. Microbiol.* 125, 930–942. doi: 10.1111/jam.14025
- Spor, A., Camargo, A. R. O., Bru, D., Gaba, S., Garmyn, D., Gal, L., et al. (2020). Habitat Disturbances Modulate the Barrier Effect of Resident Soil Microbiota on *Listeria monocytogenes* Invasion Success. *Front. Microbiol.* 11:927. doi: 10.3389/fmicb.2020.00927
- Srinivasiah, S., Bhavsar, J., Thapar, K., Liles, M., Schoenfeld, T., and Wommack, K. E. (2008). Phages across the biosphere: contrasts of viruses in soil and aquatic environments. *Res. Microbiol.* 159, 349–357. doi: 10.1016/j.resmic.2008.04.010
- Suzuki, S., Yoshikawa, M., Imamura, D., Abe, K., Eichenberger, P., and Sato, T. (2020). Compatibility of Site-Specific Recombination Units between Mobile Genetic Elements. *iScience* 23:100805. doi: 10.1016/j.isci.2019.100805
- Vergheze, B., Lok, M., Wen, J., Alessandria, V., Chen, Y., Kathariou, S., et al. (2011). comK prophage junction fragments as markers for *Listeria monocytogenes* genotypes unique to individual meat and poultry processing plants and a model for rapid niche-specific adaptation, biofilm formation, and persistence. *Appl. Environ. Microbiol.* 77, 3279–3292. doi: 10.1128/AEM.00546-11
- Vila Nova, M., Durimel, K., La, K., Felten, A., Bessières, P., Mistou, M.-Y., et al. (2019). Genetic and metabolic signatures of *Salmonella enterica* subsp. *enterica* associated with animal sources at the pangenomic scale. *BMC Genom.* 20:814. doi: 10.1186/s12864-019-6188-x
- Vivant, A. L., Desneux, J., Pourcher, A. M., and Piveteau, P. (2017). Transcriptomic Analysis of the Adaptation of *Listeria monocytogenes* to Lagoon and Soil Matrices Associated with a Piggery Environment: comparison of Expression Profiles. *Front. Microbiol.* 8:1811. doi: 10.3389/fmicb.2017.01811
- Vivant, A. L., Garmyn, D., Gal, L., Hartmann, A., and Piveteau, P. (2015). Survival of *Listeria monocytogenes* in Soil Requires AgrA-Mediated Regulation. *Appl. Environ. Microbiol.* 81, 5073–5084. doi: 10.1128/AEM.04134-14
- Vivant, A. L., Garmyn, D., and Piveteau, P. (2013). *Listeria monocytogenes*, a down-to-earth pathogen. *Front. Cell Infect. Microbiol.* 3:87. doi: 10.3389/fcimb.2013.00087
- Wang, Y., Li, X., Osmundson, T., Shi, L., and Yan, H. (2019). Comparative Genomic Analysis of a Multidrug-Resistant *Listeria monocytogenes* ST477 Isolate. *Foodborne Pathog. Dis.* 16, 604–615. doi: 10.1089/fpd.2018.2611
- Weindl, L., Frank, E., Ullrich, U., Heurich, M., Kleta, S., Ellerbroek, L., et al. (2016). *Listeria monocytogenes* in Different Specimens from Healthy Red Deer and Wild Boars. *Foodborne Pathog. Dis.* 13, 391–397. doi: 10.1089/fpd.2015.2061
- Welshimer, H. J. (1960). Survival of *Listeria monocytogenes* in soil. *J. Bacteriol.* 80, 316–320. doi: 10.1128/JB.80.3.316-320.1960
- Williamson, K. E., Radosevich, M., Smith, D. W., and Wommack, K. E. (2007). Incidence of lysogeny within temperate and extreme soil environments. *Environ. Microbiol.* 9, 2563–2574. doi: 10.1111/j.1462-2920.2007.01374.x
- Yoshida, T., Sugimoto, T., Sato, M., and Hirai, K. (2000). Incidence of *Listeria monocytogenes* in wild animals in Japan. *J. Vet. Med. Sci.* 62, 673–675. doi: 10.1292/jvms.62.673
- Zheng, F., Long, Q., and Xie, J. (2012). The function and regulatory network of WhiB and WhiB-like protein from comparative genomics and systems biology perspectives. *Cell Biochem. Biophys.* 63, 103–108. doi: 10.1007/s12013-012-9348-z

**Conflict of Interest:** The authors declare that the research was conducted in the absence of any commercial or financial relationships that could be construed as a potential conflict of interest.

**Publisher's Note:** All claims expressed in this article are solely those of the authors and do not necessarily represent those of their affiliated organizations, or those of the publisher, the editors and the reviewers. Any product that may be evaluated in this article, or claim that may be made by its manufacturer, is not guaranteed or endorsed by the publisher.

Copyright © 2022 Sévellec, Ascencio, Douarre, Félix, Gal, Garmyn, Guillier, Piveteau and Roussel. This is an open-access article distributed under the terms of the Creative Commons Attribution License (CC BY). The use, distribution or reproduction in other forums is permitted, provided the original author(s) and the copyright owner(s) are credited and that the original publication in this journal is cited, in accordance with accepted academic practice. No use, distribution or reproduction is permitted which does not comply with these terms.