



**HAL**  
open science

## Weed suppression in cover crop mixtures under contrasted levels of resource availability

Alicia Rouge, Guillaume Adeux, Hugues Busset, Rodolphe Hugard, Juliette Martin, Annick Matejcek, Delphine Moreau, Jean-Philippe Guillemin, Stéphane Cordeau

### ► To cite this version:

Alicia Rouge, Guillaume Adeux, Hugues Busset, Rodolphe Hugard, Juliette Martin, et al.. Weed suppression in cover crop mixtures under contrasted levels of resource availability. *European Journal of Agronomy*, 2022, 136, pp.126499. 10.1016/j.eja.2022.126499 . hal-03641417

**HAL Id: hal-03641417**

**<https://institut-agro-dijon.hal.science/hal-03641417>**

Submitted on 22 Jul 2024

**HAL** is a multi-disciplinary open access archive for the deposit and dissemination of scientific research documents, whether they are published or not. The documents may come from teaching and research institutions in France or abroad, or from public or private research centers.

L'archive ouverte pluridisciplinaire **HAL**, est destinée au dépôt et à la diffusion de documents scientifiques de niveau recherche, publiés ou non, émanant des établissements d'enseignement et de recherche français ou étrangers, des laboratoires publics ou privés.



Distributed under a Creative Commons Attribution - NonCommercial 4.0 International License

1 *Original article*

2 **Weed suppression in cover crop mixtures under contrasted levels of resource**  
3 **availability**

4 Alicia Rouge <sup>a, b</sup>, Guillaume Adeux <sup>a</sup>, Hugues Busset <sup>a</sup>, Rodolphe Hugard <sup>c</sup>, Juliette  
5 Martin <sup>c</sup>, Annick Matejcek <sup>a</sup>, Delphine Moreau <sup>a</sup>, Jean-Philippe Guillemain <sup>a</sup>, Stéphane  
6 Cordeau <sup>a, \*</sup>

7 <sup>a</sup> Agroécologie, INRAE, Institut Agro, Univ. Bourgogne, Univ. Bourgogne-Franche-  
8 Comté, F-21000 Dijon, France

9 <sup>b</sup> AgroParisTech, 75005 Paris, France

10 <sup>c</sup> INRAE, U2E, Unité Expérimentale du domaine d'Epoisses, F-21110 Bretenière,  
11 France

12

13 \*Corresponding author: [stephane.cordeau@inrae.fr](mailto:stephane.cordeau@inrae.fr); Tel. +33 3 80 69 32 67

14

15 **Abstract**

16 Cover crop (CC) mixtures appear as a promising agroecological tool for weed  
17 management. Although CC suppress weed growth by competing for resources, their  
18 suppressive effect under contrasting levels of soil resource availability remains poorly  
19 documented. A two field:year experiment was conducted to investigate the weed  
20 suppressive effect of four CC mixtures. They were composed of 2 or 8 species  
21 including or not legume species and compared to a bare soil control. The experiment  
22 included two levels of irrigation and nitrogen fertilisation at CC sowing. The objectives  
23 were to assess (i) weed and CC aboveground biomass response to CC mixtures and  
24 resource availability, (ii) the weed suppressive effect of CC mixtures across a gradient  
25 of CC biomass and (iii) weed community response to CC mixtures and resource  
26 availability. CC and weed biomass were mainly influenced by interactions between CC  
27 mixtures and fertilisation and between CC mixtures and irrigation, with contrasted  
28 effects between field:years. Nitrogen fertilisation increased biomass of non-legume  
29 based CC mixtures but this only resulted into a further reduction of weed biomass of  
30 little biological relevance. Legume-based CC mixtures suppressed weeds to a greater  
31 extent without nitrogen fertilisation in year 2 but not in year 1, possibly due to  
32 contrasted initial soil nitrogen availability (lower in year 2). Weed biomass generally  
33 benefited more from irrigation than CC mixtures. Among the 33 weed species  
34 recorded, weed communities in each plot were dominated by wheat volunteers,  
35 *Geranium dissectum*, *Veronica persica* and *Echinochloa crus-galli*, whose biomass  
36 varied depending on the interaction between year, CC mixture and resource  
37 availability. Our results revealed that competitive outcomes between CC mixtures and  
38 weed species were driven by a complex interaction between resource availability and  
39 species traits. Further experiments focusing on plant traits should improve our  
40 understanding of weed:CC competitive outcomes under various levels of resource  
41 availability.

42 **Keywords:** cover crop mixtures, weed community, biomass, competition, nitrogen,  
43 water

## 44 1. Introduction

45 Weeds are a major concern in agriculture due to important potential crop yield losses  
46 (Oerke, 2006) and their management currently often relies on herbicide use. However,  
47 the over-reliance on chemical weed control is now questioned for its impact on the  
48 environment (Kamrin, 1997), biodiversity (McLaughlin and Mineau, 1995) and human  
49 health (Alavanja et al., 2004). The number of active herbicide substances on the  
50 market is decreasing (Chauvel et al., 2012), thereby increasing the probability of weed  
51 resistance through recurrent use of a reduced number of herbicides at the crop rotation  
52 scale (Powles and Yu, 2010). Biodiversity-based options are sought in order to  
53 diversify the selection pressures at the crop rotation scale (Petit et al., 2018). Cover  
54 crops (CC) are plant species cultivated between two main cash crops which can  
55 provide multiple ecosystem services (*e.g.* reducing soil erosion, improving soil  
56 properties or crop yields), including weed suppression (Teasdale et al., 2007; Mirsky  
57 et al., 2011; Cordeau et al., 2015). The weed suppressive effect of CC can be defined  
58 as the capacity of CC to reduce weed biomass (Christensen, 1995). However,  
59 mechanisms underlying the weed suppressive effect of CC remains unclear, especially  
60 in CC mixtures (Nichols et al., 2020).

61 Farmers and extension services are promoting and implementing CC as species-  
62 diverse mixtures (CTIC, 2017). However, the systematic review by Florence and  
63 MacGuire (2020) reported that weed suppression was not greater in CC mixtures than  
64 the most suppressive species of the mixture (grown in monoculture) in 98% of cases.  
65 The relationship between CC mixtures, CC biomass production and weed suppression  
66 remains unclear. On the one hand, numerous studies have reported enhanced weed  
67 suppression through the use of key CC functional groups producing high biomass,  
68 such as grasses and *Brassicaceae* (Bybee-Finley et al., 2017; Smith et al., 2020). On  
69 the other hand, other studies have reported higher CC biomass production when  
70 combining species with complementary traits (*e.g.* legumes and non-legumes) (Suter  
71 et al., 2017), with no direct consequence on weed suppression (Ranaldo et al., 2020).  
72 Biomass is commonly used indicator to quantify competition between CC and weeds  
73 because it results from resource availability and competitive outcome with  
74 neighbouring plants (ability to tolerate or suppress) (Trinder et al., 2021). Thus, most  
75 authors reporting a weed suppressive effect of CC showed a negative relationship  
76 between CC and weed biomass (Finney et al., 2017; Wittwer et al., 2017; Osipitan et  
77 al., 2019), probably because of a greater ability of CC to uptake soil resources, produce  
78 biomass and shade competing weeds. Nevertheless, a recent study from Adeux et al.  
79 (2021) showed that the relationship between weed and CC biomass was dependent  
80 on CC species, with *Brassica juncea* being more weed suppressive than *Vicia villosa*  
81 at low levels of CC biomass. Such results suggest that for a given level of CC biomass,  
82 certain CC species traits (*e.g.* nitrogen uptake ability or early ground cover) could  
83 provide a competitive advantage.

84 CC and weed biomass depends on soil nutrient availability (Ryan et al., 2011), water  
85 availability (Ruis et al., 2019), light availability (MacLaren et al., 2019), plant density  
86 (Bybee-Finley et al., 2022) and plant traits such as the ability to acquire and transform  
87 these resources into biomass (Tribouillois et al., 2015; Tribouillois et al., 2016; Blesh,  
88 2018). Thus, competition is expected to be more intense when resource availability is

89 low and when CC and weeds share the same pool of resources in the same time and  
90 space (Garnier and Navas, 2012). Light is often considered as the main driver of  
91 competition between crops and weeds on agricultural lands (Perry et al., 2003). But in  
92 summer-sown CC, competition for soil resources can be as important as competition  
93 for light because soil water and nitrogen can be scarce (Kiær et al., 2013). Therefore,  
94 competition between CC and weeds under contrasted levels of water and nitrogen  
95 availability needs to be explored to improve the weed suppressive effect of CC  
96 mixtures. However, we found no study which explored nitrogen competition between  
97 weeds and CC mixtures by quantifying plant nitrogen uptake.

98 Focusing on weed community composition could shed light on specific interactions  
99 between weed species, CC mixtures and/or resource availability (Smith and Gross,  
100 2007; Navas, 2012). Weed community composition, diversity and abundance are  
101 mainly driven by the expression of the weed seed bank (Smith et al., 2015), but could  
102 be influenced directly by soil nitrogen availability or indirectly by variations in CC  
103 nitrogen acquisition (Pyšek and Lepš, 1991). Smith et al. (2015) reported a general  
104 negative relationship between CC biomass and weed species richness across all CC  
105 species, but lacked to identify a filtering effect of certain CC mixtures on specific weed  
106 species. However, this study only tested CC monocultures and one CC mixture  
107 composed of five species. Testing a greater diversity of CC mixtures under contrasted  
108 levels of water and nitrogen availability could help to further investigate the filtering  
109 effect of CC mixtures on weed communities.

110 The objective of this study was to investigate the weed suppressive effect of summer-  
111 sown CC mixtures during the fallow period, under contrasted levels of soil water and  
112 nitrogen availability. To our knowledge, our study is the first to manipulate contrasted  
113 levels of soil resource availability (nitrogen, water) and CC mixtures and investigate  
114 their effect on (i) weed and CC aboveground biomass, (ii) the relationship between the  
115 latter and (iii) weed community composition. We hypothesised that (1) weed and CC  
116 biomass depend on interactions between CC mixture and resource availability, (2)  
117 higher CC biomass generally ensures higher weed suppression but that some CC  
118 mixtures are more weed suppressive than others at low levels of CC biomass, and (3)  
119 weeds show species-specific response to contrasted levels of CC mixtures and  
120 resource availability. The present study is based on a factorial experiment repeated on  
121 two field:years, which compared four CC mixtures to a bare soil control, under different  
122 levels of nitrogen and water availability. A total of 360 weed and CC biomass samples  
123 and their nitrogen quantities were analysed.

## 124 **2. Material and methods**

125

### 126 *2.1. Site characteristics*

127 The experiment was replicated on two field:years (one field in 2016 and another in  
128 2017, further denoted year 1 and year 2, respectively) at the INRAE experimental site  
129 in Bretenièrre (47°14'11.2" N, 5°05' 56.1" E), 15 km south-east of Dijon, France. Both  
130 fields were characterised by a clay (40%) - silt (50%) soil texture and a calcareous  
131 bedrock. The site is subject to a semi-continental climate, characterised by mean  
132 annual precipitation of 765 mm and an average daily temperature of 10.5°C, with

133 strong variations between winter and summer. Average daily temperature and daily  
134 rainfall over the course of the two years can be found in Supp. Fig. 1. The  
135 environmental conditions were quite similar in both years with an average of 25 mm of  
136 rainfall around CC sowing and moderate temperatures in summer. A winter wheat crop  
137 preceded CC sowing in both field:years. Straw were exported and stubble was  
138 superficially tilled after winter wheat harvest. Unfortunately, post-harvest soil inorganic  
139 nitrogen was not measured at the field but rather estimated for each year (Supp. Table  
140 1) using the nitrogen balance method (Sainju, 2017). Residual nitrogen was higher in  
141 year 1 (~74 kg N ha<sup>-1</sup>) than in year 2 (~0 kg N ha<sup>-1</sup>), mostly due to a combination of  
142 high mineral nitrogen fertilisation and low winter wheat uptake in year 1.

## 143 2.2. Experimental set-up

144 Four CC mixtures (2leg-: 2 CC species without legumes, 2leg+: 2 CC species with  
145 legume, 8leg-: 8 CC species without legumes and 8leg+: 8 CC species with four  
146 legumes) including a wide range of species commonly used by French farmers (Table  
147 1, black oat, winter rye, sorghum, foxtail millet, common vetch, berseem clover, faba  
148 bean, brown hemp, brown mustard, field mustard, lacy phacelia, niger seed,  
149 buckwheat, linseed) were compared to a bare soil control. CC were sown in summer  
150 (August 10th and July 28th year 1 and 2, respectively) at their recommended pure  
151 stand seeding rate divided by the number of species in the mixture and majored by  
152 15% (Table 1). CC mixtures were created to occupy distinct spaces along a species  
153 richness and biomass productivity gradient, determined by their ability to respond to  
154 resource availability. *Poaceae* and *Brassicaceae* species were expected to quickly pre-  
155 empt nitrogen and produce high biomass while *Fabaceae* species could avoid nitrogen  
156 competition through dinitrogen fixation. Moreover, CC species were likely to differ in  
157 their root and aerial architecture, thereby modifying competition for light and/or soil  
158 resources. CC mixtures were composed of two or 8 species, as two is the minimum to  
159 obtain a mixture and because 8 represents the end of the species richness gradient  
160 commonly used by farmers in CC mixtures. Further increasing CC species richness  
161 would have either induced functional redundancy or the inclusion of less relevant  
162 species. Two levels of irrigation (0 mm or 40 mm) and nitrogen fertilisation (0N: 0 kg N  
163 ha<sup>-1</sup> or 30N: 30 kg N ha<sup>-1</sup> of ammonium nitrate 33.5%) were applied around CC sowing  
164 to mimic contrasted levels of soil resources. The experiment was set-up as a double  
165 entry split-plot in a randomised complete block design (Supp. Fig. 2, n blocks = 3).  
166 Main plots were characterised by the intersection of the two irrigation and nitrogen  
167 fertilisation strips for practical reasons. CC mixtures and bare soil control were  
168 replicated 3 times within each main plot due to a forthcoming CC termination factor  
169 (not studied here). As a result, each combination of CC mixture (N=5), nitrogen level  
170 (N=2) and irrigation level (N=2) was replicated 9 times, resulting in a total of 180 plots  
171 (10 m<sup>2</sup> each). Since weeds are known to be patchily distributed within a field (Hughes,  
172 1990), four weed species (*Echinochloa crus-galli*, *Veronica persica*, *Geranium*  
173 *dissectum*, *Chenopodium album*) with contrasted functional attributes (e.g. height, leaf  
174 area) were sown at 60 seeds m<sup>-2</sup> per species across all plots at CC sowing to  
175 homogenise weed pressure within each experiment.

176 *2.3. Biomass sampling and nitrogen quantity*

177 CC (all species combined) and weed (per species) aboveground biomass were  
178 sampled 90 days after CC sowing in each experiment, in all 180 plots, in one 1 m<sup>2</sup> and  
179 two 0.25 m<sup>2</sup> quadrats per plot in year 1 and 2, respectively. This type of sampling was  
180 chosen because competition occurs in a close environment and two quadrats were  
181 used year 2 to improve the technical feasibility during biomass sampling. All biomass  
182 samples were oven dried at 80°C for 72 hours and weighed.

183 In order to partition nitrogen uptake between CC and weeds, plant nitrogen was  
184 quantified. The nitrogen concentration (g N / g aboveground biomass) in CC (all  
185 species summed) and weed (per species) was measured using the Dumas method  
186 (ThermoScientific™ FLASH 2000 CHNS/O Analyzer). The two quadrats were summed  
187 in year 2 so as to quantify one value of nitrogen concentration per plot for both CC (all  
188 species summed) and weeds (per species). The quantity of nitrogen in plants (g N m<sup>-1</sup>)  
189 was calculated by multiplying the nitrogen concentration (g N / g biomass) by  
190 biomass (g m<sup>-1</sup>) at the plot:year scale.

191 The two CC and weed biomass samples per plot in year 2 were averaged at the plot  
192 level to avoid an additional hierarchical level (pseudo-replication) and obtain a  
193 balanced design between years. Weed biomass and nitrogen quantity per species  
194 were summed at the plot level to obtain total weed biomass and total weed nitrogen  
195 quantity.

196 *2.4. Nitrogen nutrition index*

197 The nitrogen nutrition index (NNI) of CC mixtures was calculated at the plot:year scale  
198 to quantify their nitrogen status, following Eq. 1 provided by Lemaire and Gastal (1997):

199 
$$NNI = \frac{\%N_{\text{measured}}}{\%N_c} \quad (\text{Eq. 1})$$

200 where, %N<sub>measured</sub> (g N / g biomass) is the nitrogen concentration measured at the  
201 plot:year scale in CC mixtures (all species summed) and %N<sub>c</sub> (g N / g biomass) is  
202 computed as Eq. 2:

203 
$$\%N_c = 5.1 * (DM)^{-0.34} \quad (\text{Eq. 2})$$

204 where, DM is the total (CC mixture+weeds) biomass (t ha<sup>-1</sup>).

205 This equation shows the critical nitrogen dilution curve (*i.e.* relationship between  
206 nitrogen and biomass accumulation at optimal canopy nutrition). Initially developed for  
207 monospecies canopies (Lemaire and Gastal, 1997), it was adapted to multispecies  
208 canopies (Louarn et al., 2021). The parameters of Eq. 2 are valid for legume as well  
209 as non-legume C3 plants (Munier-Jolain et al., 2010), *i.e.* the vast majority of CC and  
210 weed species in the experiment.

211 When NNI = 1, nitrogen nutrition is considered optimal, while NNI > 1 and < 1 indicate  
212 excess and deficient nitrogen nutrition, respectively.

213 In our study, a NNI < 1 would indicate nitrogen deficiency in CC mixtures, either as a  
214 result of below optimal initial soil nitrogen availability or as a result of nitrogen uptake

215 from weeds. To investigate whether fertilisation enhanced the weed suppressive effect  
216 of CC mixtures through enhanced nitrogen nutrition, NNI of CC mixtures were  
217 compared between fertilised and non-fertilised plots.

## 218 *2.5. Statistical analysis*

219 Statistical analysis were performed with the R software version 4.0.2 (R Core Team,  
220 2021). CC and weed biomass, nitrogen quantities and CC NNI were analysed at the  
221 plot scale (*i.e.* average of the two pseudo replicates for year 2) with tweedie  
222 generalised mixed effect models using a log link function, available in the R package  
223 glmmTMB (Brooks et al., 2017). All response variables were modelled as a function of  
224 year (as factor, confounded with field), CC mixture, fertilisation (as factor), irrigation  
225 (as factor) and all possible interactions between these four factors. Bare soil controls  
226 were removed from the analysis when focusing only on CC mixtures (*i.e.* CC biomass  
227 and nitrogen quantity, and CC NNI). To identify whether the relationship between CC  
228 and weed biomass was dependent on CC mixtures, weed biomass was also modelled  
229 as a function of year, CC mixture, CC biomass and all possible interactions between  
230 the three latter.

231 For all six models an *a priori* set of five plausible random effect structures were defined  
232 and compared using Akaike's Information Criterion (AIC), in order to best capture the  
233 structure of the experimental design (Supp. Table 2). The model with the lowest AIC  
234 was retained for analysis. The absence of confounding factors with the non-  
235 randomised nitrogen strip was confirmed through an investigation of within-field yield  
236 variability of the preceding winter wheat crop and soil resistivity (Supp. Fig. 3). The  
237 split-split-plot model with irrigation as main plot factor, fertilisation as subplot factor and  
238 CC mixture completely randomised within was retained for the analysis of CC NNI,  
239 weed biomass, weed nitrogen quantity and the relationship between weed and CC  
240 biomass, while a spatial exponential model was chosen to analyse CC biomass and  
241 CC nitrogen quantity. Significance of effects was determined through Type III Wald  
242 Chi-Square tests using the function Anova of the R package car (Fox and Weisberg,  
243 2020). Contrasts were adjusted using the R package emmeans (Lenth, 2021).

244 Partial Redundancy Analysis (*i.e.* pRDA) was performed at the plot scale (*i.e.* average  
245 of the two pseudo replicates for year 2) for each experiment so as to investigate  
246 individual weed species response to experimental factors, after the removal of block  
247 effect, using the rda function of the R package vegan (Oksanen et al., 2020). The  
248 choice of a linear method was confirmed by assessing the length of the first axis of a  
249 detrended correspondence analysis (<3 SD unit). The response matrix consisted of 144  
250 row (one for each plot sown with a CC mixture) and 19 (one for each weed species  
251 observed in year 1) or 20 columns (year 2). Weed species biomass were ln-  
252 transformed to reduce the influence of dominants. Significance of effects were  
253 determined through restricted permutation tests (n=999) taking into account blocks and  
254 main plots (combinations of irrigation and fertilisation), using the R function permute of  
255 R package permute (Simpson, 2019). Significant effects were graphically represented  
256 using the CANOCO Software.

257

### 258 3. Results

259

#### 260 3.1. Cover crop biomass, nitrogen quantity and nitrogen nutrition index

261 CC biomass was driven by the interactions between year, fertilisation and CC mixture  
262 and between year, irrigation and CC mixture (Table 2). Across all other factors, CC  
263 biomass was greatest in 2leg-, intermediate in 8leg- and 8leg+ and lowest in 2leg+  
264 (Fig. 1a). All CC mixtures (except 2leg+ in year 2) responded significantly and  
265 positively to nitrogen fertilisation (+80 to 121 g DM m<sup>-2</sup>), but to a lower extent for 2leg+  
266 in year 1 (+42 g DM m<sup>-2</sup>) and 8leg+ in year 2 (+32 g DM m<sup>-2</sup>) (Fig. 2a). Only 8leg+ in  
267 year 2 responded significantly and positively (+61 g DM m<sup>-2</sup>) to irrigation while biomass  
268 of other CC mixtures remained unchanged (Supp. Fig. 4a).

269 CC nitrogen quantity was driven by the interaction between year, fertilisation and CC  
270 mixture (Table 2). All CC mixtures (except legume-based CC in year 2) showed a  
271 significant increase in nitrogen quantity (+0.95 to 1.93 g N m<sup>-2</sup>) with nitrogen fertilisation  
272 (Supp. Fig. 5a), potentially corresponding to one to two-thirds of the 30 kg N ha<sup>-1</sup> (= 3  
273 g N m<sup>-2</sup>) supplied by fertilisation at CC sowing. Nitrogen nutrition was suboptimal for  
274 all CC mixtures (NNI<1) each year of the experiment (Fig. 3). NNI of CC mixtures was  
275 driven by the interaction between year, fertilisation and CC mixture (Table 2). All NNI  
276 values of CC were higher with nitrogen fertilisation in year 1, except 8leg+ (Fig. 3). In  
277 year 2, nitrogen fertilisation increased NNI of non-legume-based CC mixtures (not  
278 significantly for 8leg-) whereas NNI of legume-based CC mixtures decreased (Fig. 3).

#### 279 3.2. Weed biomass, nitrogen quantity and community composition

280 Weed biomass was driven by the interactions between year, fertilisation and CC  
281 mixture and between year, irrigation and CC mixture (Table 2). Across all other factors,  
282 2leg+ reduced weed biomass by 68% (-130 g DM m<sup>-2</sup>) whereas all other CC mixtures  
283 reduced weed biomass by 90 to 94% (-170 to -180 g DM m<sup>-2</sup>), with respect to the bare  
284 soil control (Fig. 1b). Weed biomass was generally unaffected or slightly reduced (-5  
285 and -7 g DM m<sup>-2</sup> for 8leg- and 8leg+, respectively, in year 1) with nitrogen fertilisation  
286 for all CC mixtures (Fig. 2b). The only exception was for legume-based CC mixtures in  
287 year 2 where weed biomass increased with nitrogen fertilisation (+12 and 34 g DM m<sup>-2</sup>  
288 for 8leg+ and 2leg+, respectively). Irrigation increased weed biomass in 6 out of 8 CC  
289 mixtures:year combinations (+7 to 30 g DM m<sup>-2</sup>) (Supp. Fig. 4b).

290 Weed nitrogen quantity was driven by the interaction between year, fertilisation and  
291 CC mixture (Table 2). Nitrogen fertilisation increased weed biomass in two  
292 combinations of CC mixture:year out of eight (+0.17 and 0.75 g N m<sup>-2</sup> for 2leg+ in year  
293 1 and 2, respectively), decreased weed biomass in one (-0.03 g N m<sup>-2</sup> for 8leg- in year  
294 1) and had no effect for the five others (Supp. Fig. 5b).

295 Among the 33 weed species recorded, total weed biomass was dominated by wheat  
296 volunteers (61 and 12% in year 1 and 2, respectively) and two of the sown weed  
297 species each year, *i.e.* *Geranium dissectum* and *Veronica persica* in year 1 (21 and  
298 9%, respectively) and *Geranium dissectum* and *Echinochloa crus-galli* in year 2 (64  
299 and 10%, respectively). Wheat volunteers were homogeneous among plots whereas  
300 the two sown weed species varied across CC mixtures and resource availability each  
301 year. Multivariate analysis showed that irrigation increased biomass of *Geranium*



302 *dissectum* and *Veronica persica* in year 1, especially in 2leg- and 2leg+ (Supp. Fig.  
303 6a). Irrigation and nitrogen fertilisation increased biomass of *Geranium dissectum* and  
304 *Echinochloa crus-galli* in year 2, especially in 2leg+ and 8leg+ (Supp. Fig. 6b).

### 305 3.3. Weed - cover crop biomass relationship

306 Weed biomass was driven by year, CC biomass, CC mixture and all possible  
307 interactions between these three latter (Table 3). The relationship between weed and  
308 CC biomass was negative in all CC mixtures in year 1 but only in 8leg+ in year 2 (Fig.  
309 4). Increasing CC biomass from 100 to 400 g DM m<sup>-2</sup> had little effect on weed biomass  
310 in all CC mixtures (-10 to -15 g DM m<sup>-2</sup>), except for 2leg+ in year 1 (-45 g DM m<sup>-2</sup>) and  
311 8leg+ in year 2 (-33 g DM m<sup>-2</sup>).

312

## 313 4. Discussion

314

### 315 4.1. Increasing resource availability does not ensure a higher weed suppressive 316 effect of cover crop mixtures

317 Our study confirmed that CC could suppress weed biomass, with respect to the bare  
318 soil control, as previously reported in numerous studies (Teasdale et al., 2007;  
319 Baraibar et al., 2018; Florence and McGuire, 2020; Adeux et al., 2021). However, CC  
320 biomass was highly variable depending on CC mixture and resource availability, and  
321 weed biomass mainly varied depending on CC mixture, which partly validates our first  
322 hypothesis of an interaction effect between CC mixture and resource availability on CC  
323 and weed biomass. Weed suppression was higher in the 8-species non-legume based  
324 CC mixtures although the 2-species non-legume based CC mixtures produced the  
325 highest CC biomass, suggesting that CC biomass alone does not fully explain weed  
326 suppression. In both years, when nitrogen fertilisation increased biomass of CC  
327 mixtures, no repercussions on weed biomass of biological relevance were observed.  
328 In contrast, irrigation increased weed biomass whereas biomass of CC mixtures  
329 remained stable. Besides, in 5 out of 8 CC mixture:year combinations, the relationship  
330 between weed and CC biomass was negative as previously observed many times  
331 (Finney et al., 2017; Wittwer et al., 2017; Osipitan et al., 2019), but the major part of  
332 weed suppression was done at low levels of CC biomass (< 200 g DM m<sup>-2</sup>). In the other  
333 3 out of 8 CC mixture:year combinations, no relationship between weed and CC  
334 biomass was found, suggesting that nitrogen fertilisation did not hastened CC canopy  
335 close, which did not limited weed growth. The interaction between CC mixture and CC  
336 biomass partly confirmed our second hypothesis that a higher CC biomass generally  
337 ensure higher weed suppression but that some CC mixtures are more weed  
338 suppressive than others at low CC biomass levels. All these observations suggest that  
339 CC biomass is not the only factor of weed suppression contrary to conclusions of many  
340 studies (Mirsky et al., 2013; Bybee-Finley et al., 2017; MacLaren et al., 2019; Florence  
341 and McGuire, 2020).

#### 342 4.2. Trait complementarity within cover crop mixtures

343 Our results showed that weed suppression was mainly driven by CC mixtures and to  
344 a less extent by its interaction with nitrogen fertilisation. In our study, non-legume  
345 based CC mixtures were mainly composed of *Poaceae*, *Brassicaceae* and/or other  
346 species (e.g. lacy phacelia) that generally produce high biomass through high nitrogen  
347 uptake (Tribouillois et al., 2015). However, these CC mixtures were nitrogen deficient  
348 in both years of the experiment ( $NNI < 1$ ), despite the high level of soil mineral nitrogen  
349 estimated after wheat harvest in year 1. Such discrepancies could arise from either the  
350 loss of a part of soil mineral nitrogen between wheat harvest and CC sowing (e.g.  
351 through nitrate leaching), or a limitation in nitrogen absorption by plants due to water  
352 stress. Nitrogen fertilisation increased biomass, nitrogen quantity and nitrogen nutrition  
353 level in non-legume based CC mixtures but did not lead to reduced weed biomass or  
354 weed nitrogen uptake. It suggests that competition for nitrogen was not the major driver  
355 of weed biomass. Rather, we hypothesise that light was the limiting factor for weed  
356 growth in non-legume based CC mixtures. Higher weed suppression in 8-species non-  
357 legume based CC mixtures than in 2-species non-legume based CC mixtures (in both  
358 years) could be related to trait complementarity between CC species (e.g. early growth  
359 rate, leaf area establishment, root architecture), leading to a more efficient use of light  
360 (Ranaldo et al., 2020), and a suppressive effect of weeds of short stature (Cressman  
361 et al., 2011). Tribouillois et al. (2015) showed that the species composing the 8-species  
362 CC mixtures, such as buckwheat, niger or brassica species, had a higher potential  
363 growth rate than phacelia or the *Poaceae* species (either winter or summer species)  
364 composing the 2-species CC mixtures, thereby supporting our hypothesis of greater  
365 weed suppression through a more efficient use of light in highly diversified CC mixtures  
366 (Suter et al., 2017).

367 The effect of nitrogen fertilisation on weed suppression by legume-based CC mixtures  
368 (either 2- or 8-species) was inconsistent across the two field:years (i.e. experiments).  
369 Nitrogen fertilisation had no (or slightly positive) effect on the weed suppressive effect  
370 of legume-based CC mixtures in year 1 (i.e. when soil mineral nitrogen at crop harvest  
371 was estimated high), whereas it reduced their weed suppressive effect in year 2 (i.e.  
372 when soil mineral nitrogen at crop harvest was estimated low). Legume species are  
373 favoured in nitrogen-poor environment due to their ability to symbiotically fix  
374 atmospheric dinitrogen (Clark et al., 2007), and disfavoured in nitrogen-rich  
375 environment because of their low initial growth (Voisin et al., 2002; Möller et al., 2008).  
376 Hence, the differences in weed suppression between fertilised and non-fertilised plots  
377 of legume-based CC mixture could be related to a modification of the relative  
378 contribution of each CC species present in the mixture. We hypothesise that the  
379 estimated high level of available soil nitrogen in year 1 at crop harvest did not promote  
380 the competitive ability of legumes (Andersen et al., 2005), while non-legumes were  
381 favoured in the mixtures (albeit at a reduced density than if legumes were not present),  
382 resulting in a similar weed suppressive effect of legume-based CC than of non-legume  
383 based CC mixtures during that year. Under limited soil nitrogen availability (i.e. soil  
384 mineral nitrogen was estimated low in year 2), fertilisation probably favoured the growth  
385 of non-legume species while limited the growth of the legumes in the legume-based  
386 CC mixture, resulting in stable CC biomass across both fertilised and non-fertilised  
387 plots (i.e. only a change in the relative composition). In addition, non-legume species  
388 used to exhibit a lower nitrogen rate (%) in their biomass than legume species (Guinet

389 et al., 2020). Thus, the reduction of legume biomass relatively to the increase of non-  
390 legume biomass (*i.e.* change in the relative composition of the biomass), combined  
391 with the lower nitrogen rate of non-legume species compared to legume species,  
392 decreased the N percent in the total biomass, decreasing NNI. Weed suppression was  
393 then enhanced in non-fertilised plots through a direct effect of lower soil nitrogen  
394 availability and a better complementarity between legume and non-legume CC species  
395 to outcompete weeds for light and nitrogen (Suter et al., 2017; Ranaldo et al., 2020).

396 Finally, weed biomass depended also on water availability because weed biomass  
397 increased with irrigation whereas CC biomass did not (except in one combination of  
398 year:CC mixture out of 8). We hypothesise that weed germination/emergence and  
399 early growth was enhanced by irrigation (Evans and Etherington, 1990), resulting in  
400 higher weed biomass at sampling. Indeed, weed seed imbibition is related to seed  
401 traits (Gardarin et al., 2011) such as seed weight, with smaller seeds at a competitive  
402 advantage on the soil surface because of improved seed:soil contact. Hence, the  
403 legume species in CC mixtures could have showed greater sensitivity to water  
404 availability than the *Poaceae* and *Brassicaceae* species we selected because of their  
405 large seeds (Tribouillois et al., 2016). In addition, weed seeds were placed in ideal  
406 position to germinate, *i.e.* superficially incorporated in the soil (Cordeau et al., 2015),  
407 since they were sown with CC seeds to ensure within plot homogeneity of their  
408 distribution. Differences in base water potential for germination between weeds  
409 (Guillemin et al., 2013) and CC species (Tribouillois et al., 2016) could explain the  
410 positive effect of irrigation on weeds and the absence on CC species. Even if weed:CC  
411 competition is intense after canopy closure, it could be determined at early stage by  
412 the relative growth differences (Cordeau et al., 2015), particularly when soil water  
413 availability varies (Cordeau et al., 2018).

#### 414 *4.3. Influence of cover crop mixtures and soil resources on individual weed species* 415 *biomass*

416 Weed biomass was mostly represented by two annual and sown species each year,  
417 (*i.e.* *Geranium dissectum* and *Veronica persica* in year 1 and *Geranium dissectum* and  
418 *Echinochloa crus-galli* in year 2), although homogeneous wheat volunteers across  
419 plot:years. Individual weed species did not respond to the same manner across year,  
420 reflected by the interaction between CC mixture and resource availability, confirming  
421 our third hypothesis of a CC mixture and resource availability effect on the biomass of  
422 some weed species (Bàrberi and Mazzoncini, 2001; Smith et al., 2015). Irrigation  
423 increased biomass of *Geranium dissectum* and *Veronica persica* in year 1 probably  
424 because of increased weed seed germination (Cordeau et al., 2018) and absence of  
425 CC response. Nitrogen fertilisation increased biomass of *Geranium dissectum* and  
426 *Echinochloa crus-galli* in year 2, especially in legume-based CC mixtures because of  
427 a lower competitive ability of legume-based CC mixtures at higher levels of soil nitrogen  
428 (Ellenberg, 1979; Moreau et al., 2014). Such results revealed that competitive  
429 outcomes between CC mixtures and weed species were driven by a complex  
430 interaction between resource availability and species traits. Thus, we assume that the  
431 selection of CC mixtures to control specific weed species seems difficultly practicable  
432 due to the interaction between resource availability and species traits, which govern  
433 competitive outcomes (Goldberg, 1990; Funk and Wolf, 2016).

#### 434 4.4. Practical avenues for improving weed suppression by cover crops

435 In our experiment, all CC mixtures significantly reduced weed biomass, with respect to  
436 the bare soil control, and most of this reduction was done at low levels of CC biomass  
437 ( $< 200 \text{ g DM m}^{-2}$ ). From a practical point of view, it is difficult to forecast CC biomass  
438 in a given year and pedo-climatic context because it will depend on the choice of CC  
439 species, sowing date/rate (Mirsky et al., 2017), resource availability, and in the case of  
440 CC mixtures, on the relative seeding rate between species (Bybee-Finley et al., 2022),  
441 which will affect intra- and interspecific competition. Moreover, we argue that  
442 identifying a CC biomass threshold, above which the weed suppression objective is  
443 reached, is of little relevance. Firstly, weed suppression is never complete and thus  
444 the relative risk of residual community will be a matter of farmer perception (Wilson et  
445 al., 2009) and relative to the forthcoming management practices such as CC  
446 termination or tillage practices associated to the subsequent cash crop (Adeux et al.,  
447 2021). Unfortunately, little is known about weed phenology in CC mixtures and further  
448 investigation on weed communities in subsequent crops remains primordial. Secondly  
449 and most importantly, biomass production (whether weed or CC) is a matter of  
450 resource availability and relative uptake ability, illustrated by the fact that our threshold  
451 of  $2 \text{ t ha}^{-1}$  ( $= 200 \text{ g DM m}^{-2}$ ) is lower than the  $3 \text{ t ha}^{-1}$  threshold often relayed by studies  
452 under temperate European climates (*e.g.* Gfeller et al. (2018)) and clearly lower than  
453 the  $8 \text{ t ha}^{-1}$  threshold identified as consistent across Northeastern US (Mirsky et al.,  
454 2013). Along these lines, Björkman et al. (2015) identified that weed suppression was  
455 irrespective of pure-stand mustard biomass.

456 High weed suppression observed at low CC biomass in our experiment could be partly  
457 attributed to high seeding rates (+15% with respect to a pure stand and the number of  
458 species in the mixture). Previous studies on pure stands of legumes (Mirsky et al.,  
459 2017) or grasses (Boyd et al., 2009) or on grass-legume mixtures (Uchino et al., 2011;  
460 Bybee-Finley et al., 2022) showed that increasing seeding rates increased CC biomass  
461 and thus, their weed suppressive effect (at a given level of resource availability). This  
462 high suppressive effect could also be attributed to certain species traits such as leaf  
463 area, growth rate or nitrogen acquisition rate, with CC mixtures being more competitive  
464 at low levels of biomass due to a higher capacity to pre-empt resources through diverse  
465 strategies (Tribouillois et al., 2015). These findings suggest that farmers require  
466 knowledge on CC species traits (Tribouillois et al., 2015; Tribouillois et al., 2016) to  
467 guide their selection for composing CC mixtures. The development of a decision tool  
468 to compose CC mixtures, based on trait hierarchies between CC and weed species  
469 (*e.g.* base temperature, water base potential for germination, relative growth rate, etc.)  
470 should improve the predictability of CC:weed competitive outcomes between weeds  
471 and CC mixtures.

472 Temperature and water availability are major drivers of seed emergence (Baskin and  
473 Baskin, 1988), which influence CC establishment (Tribouillois et al., 2016), especially  
474 when CC are sown in summer when temperatures are high and water availability low.  
475 We showed that irrigation increased weed biomass but not CC biomass. In the context  
476 of restricted use of irrigation, as is often the case in the summer, we argue that irrigation  
477 may not be a suitable lever to increase weed suppression. However in some cases,  
478 irrigation could ensure the minimal CC establishment and development required to

479 deliver ecosystem services. Selecting CC species tolerant to dry conditions could thus  
480 be a lever to ensure ecosystem services associated to CC, with water limited  
481 conditions expected to become more and more frequent in the coming years (Allen et  
482 al., 2018). In addition, broadcasting CC seeds earlier, *e.g.* before the preceding crop  
483 harvest, could enhance their establishment, and procure them a competitive  
484 advantage over weeds germinating later in the season (Dorn et al., 2015; Baraibar et  
485 al., 2018; Osipitan et al., 2018).

486 We showed that increased soil nitrogen availability increased biomass, nitrogen  
487 quantity and nitrogen nutrition level in CC mixtures but this did not lead to a biologically  
488 meaningful decrease in weed biomass or weed nitrogen uptake. It suggests that CC  
489 fertilisation may not be a suitable mean to increase weed suppression. In certain cases  
490 (*e.g.* legume-based CC mixtures in year 2), nitrogen fertilisation even increased weed  
491 biomass, potentially resulting in higher weed seed set, albeit weeds completed their  
492 life cycle. Unfortunately, weed phenology was not recorded, and this information is  
493 currently lacking in the scientific literature.

494 In our study, CC biomass was not the only driver of weed suppression contrary to what  
495 is commonly affirmed (Bybee-Finley et al., 2017; MacLaren et al., 2019; Florence and  
496 McGuire, 2020). However, we did not relate greater weed suppression observed in 8-  
497 species non-legume CC mixtures to a better use of water, as observed by (Nielsen et  
498 al., 2015), nor nitrogen, but to species characteristics such as rapid growth rate  
499 (Tribouillois et al., 2015) and early soil coverage (Brennan and Smith, 2005). When  
500 composing CC mixtures, attention should be paid to species characteristics and their  
501 response to contrasted levels of water and nitrogen availability.

502

## 503 **5. Conclusion**

504 The weed suppressive effect of CC was analysed during a 2-year experiment  
505 combining four CC mixtures and a bare soil under various manipulated levels of soil  
506 resources (nitrogen and water). Our study showed that CC biomass was not the only  
507 factor responsible for weed suppression and that CC and weed biomass were mainly  
508 influenced by interactions between CC mixtures and fertilisation, and between CC  
509 mixtures and irrigation. Nitrogen fertilisation increased biomass of non-legume based  
510 CC mixtures but this only resulted into a further reduction of weed biomass of little  
511 biological relevance. Legume-based CC mixture showed differences in weed  
512 suppression between fertilised and non-fertilised plots when nitrogen availability before  
513 CC sowing was estimated low, which was probably related to a modification of the  
514 relative contribution of each CC species present in the mixture. Nitrogen fertilisation  
515 may have favoured non-legume CC species, which in turn reduced legume growth and  
516 weed suppression, whereas non-fertilisation of legume-based CC mixtures enhanced  
517 weed suppression due to complementarity between non-legume and legume species.  
518 Weed biomass generally benefited more from irrigation than CC mixtures, which could  
519 be attributed to a higher probability of weed seed germination. Among the 33 weed  
520 species recorded, weed communities in each plot were dominated by homogeneous  
521 densities of wheat volunteers and *Geranium dissectum*, *Veronica persica* and

522 *Echinochloa crus-galli*, whose species biomass varied depending on the interaction  
523 between year, CC mixture and resource availability. Results revealed that competitive  
524 outcomes between CC mixtures and weed species were driven by a complex  
525 interaction between resource availability and species traits. Thus, we assume that  
526 selecting CC mixtures to reduce one problematic weed species would be difficultly  
527 practicable, considering the interaction between the environment and species traits,  
528 which govern competitive outcomes. The development of a CC mixture composition  
529 decision tool based on trait hierarchies between CC and weed species (*e.g.* base  
530 temperature, water base potential for germination, relative growth rate, etc.) could  
531 improve the predictability of CC mixture:weed competitive outcomes for given levels of  
532 resource availability. Experiments focusing on plant traits could further improve our  
533 understanding of weed:CC competitive outcomes under various levels of resource  
534 availability.

535

### 536 **Author's contribution**

537 SC, HB and JM designed the experiment. SC, DM and JPG funded the research. RH  
538 and JM conducted the experiment, and collected and formatted soil data and preceding  
539 winter wheat yield. SC, GA, HB and AM sampled biomass and quantified nitrogen  
540 concentration. AR and GA analysed the data. AR, DM, GA, JPG and SC were involved  
541 in the interpretation of the results and contributed to writing the original version of the  
542 manuscript and improving the subsequent ones. All authors agreed to the final version  
543 of the manuscript.

544

### 545 **Declaration of Competing Interest**

546 The authors declare that they have no known competing financial interests or personal  
547 relationships that could have appeared to influence the work reported in this paper.

548

### 549 **Acknowledgments**

550 Acknowledgments are expressed to the French Ministry of Agriculture which funded  
551 the PhD thesis of Alicia Rouge. We thank Léa Grall, Alexandre Lachmann, Florence  
552 Strbik, Eric Vieren, Emeline Felten, Claude Sarrasin, Séverin Yvoz, Marion Schwartz,  
553 Auxence Baudron (UMR Agroécologie – INRAE Dijon) and Benjamin Pouilly, Pascal  
554 Farcy, Jeremy Gervais, Philippe Chamoy, Loïc Dumont, Valérie Dufayet, Laurent  
555 Falchetto (U2E Domaine d'Epoisses – INRAE Bretenière) for their assistance in the  
556 field. The last year of the experiment was implemented under the principles of the CA-  
557 SYS platform (co-designed agroecological system experiment). The project was  
558 funded by INRAE, the French Burgundy region (FABER Couv'Herbi project), the  
559 Casdar VANCOUVER, RAID and ENGAGED projects funded by the French Ministry  
560 in charge of Agriculture and Food (Ministère de l'Agriculture et de l'Alimentation, avec  
561 la contribution financière du compte d'affectation spéciale 'Développement agricole et  
562 rural'), ANR COSAC project (ANR-14-CE18-0007) and ANR PPR SPECIFICS project

563 (ANR-20-PCPA-0008), and the European Union's Horizon 2020 research and  
564 innovation program under grant agreement (no. 727321- IWM PRAISE).

565

566

## 567 **References**

- 568 Adeux, G., Cordeau, S., Antichi, D., Carlesi, S., Mazzoncini, M., Munier-Jolain, N.M., Barberi, P., 2021.  
569 Cover crops promote crop productivity but do not enhance weed management in tillage-  
570 based cropping systems. *European Journal of Agronomy* 123,  
571 <https://doi.org/10.1016/j.eja.2020.126221>.
- 572 Alavanja, M.C., Hoppin, J.A., Kamel, F., 2004. Health effects of chronic pesticide exposure: cancer and  
573 neurotoxicity. *Annu. Rev. Public Health* 25, 155-197.  
574 <https://doi.org/10.1146/annurev.publhealth.25.101802.123020>
- 575 Allen, M.R., de Coninck, H., Dube, O.P., Hoegh-Guldberg, O., Jacob, D., Jiang, K., Revi, A., Rogelj, J.,  
576 Roy, J., Shindell, D., Solecki, W., Taylor, M., Tschakert, P., Waisman, H., Abdul Halim, S.,  
577 Antwi-Agyei, P., Aragón-Durand, F., Babiker, M., Bertoldi, P., Bindi, M., Brown, S.,  
578 Buckeridge, M., Camilloni, I., Cartwright, A., Cramer, W., Dasgupta, P., Diedhiou, A., Djalante,  
579 R., Dong, W., Ebi, K.L., Engelbrecht, F., Fifita, S., Ford, J., Forster, P., Fuss, S., Hayward, B.,  
580 Hourcade, J.-C., Ginzburg, V., Guiot, J., Handa, C., Hijikata, Y., Humphreys, S., Kainuma, M.,  
581 Kala, J., Kanninen, M., Kheshgi, H., Kobayashi, S., Kriegler, E., Ley, D., Liverman, D.,  
582 Mahowald, N., Mechler, R., Mehrotra, S., Mulugetta, Y., Mundaca, L., Newman, P., Okereke,  
583 C., Payne, A., Perez, R., Pinho, F.P., Revokatova, A., Riahi, K., Schultz, S., Séférian, R.,  
584 Seneviratne, S.I., Steg, L., Suarez Rodriguez, A.G., Sugiyama, T., Thomas, A., Vilariño, M.V.,  
585 Wairiu, M., Warren, R., Zhou, G., Zickfeld, K., 2018. Technical Summary. In: *Global warming of  
586 1.5°C. An IPCC Special Report on the impacts of global warming of 1.5°C above pre-industrial  
587 levels and related global greenhouse gas emission pathways, in the context of strengthening  
588 the global response to the threat of climate change, sustainable development, and efforts to  
589 eradicate poverty*. In: Masson-Delmotte, V., Zhai, P., Pörtner, H.O., Roberts, D., Skea, J.,  
590 Shukla, P.R., Pirani, A., Moufouma-Okia, W., Péan, C., Pidcock, R., Connors, S., Matthews,  
591 J.B.R., Chen, Y., Zhou, X., Gomis, M.I., Lonnoy, E., Maycock, T., Tignor, M., Waterfield, T.  
592 (Eds.). [http://pure.iiasa.ac.at/id/eprint/15716/1/SR15\\_TS\\_High\\_Res.pdf](http://pure.iiasa.ac.at/id/eprint/15716/1/SR15_TS_High_Res.pdf)
- 593 Andersen, M.K., Hauggaard-Nielsen, H., Ambus, P., Jensen, E.S., 2005. Biomass production, symbiotic  
594 nitrogen fixation and inorganic N use in dual and tri-component annual intercrops. *Plant and  
595 Soil* 266, 273-287. <https://doi.org/10.1007/s11104-005-0997-1>
- 596 Baraibar, B., Hunter, M.C., Schipanski, M.E., Hamilton, A., Mortensen, D.A., 2018. Weed suppression  
597 in cover crop monocultures and mixtures. *Weed Sci* 66, 121-133.  
598 <https://doi.org/10.1017/wsc.2017.59>
- 599 Barberi, P., Mazzoncini, M., 2001. Changes in weed community composition as influenced by cover  
600 crop and management system in continuous corn. *Weed Sci* 49, 491-499.  
601 [https://doi.org/10.1614/0043-1745\(2001\)049\[0491:CIWCCA\]2.0.CO;2](https://doi.org/10.1614/0043-1745(2001)049[0491:CIWCCA]2.0.CO;2)
- 602 Baskin, C.C., Baskin, J.M., 1988. Germination ecophysiology of herbaceous plant species in a  
603 temperate region. *American Journal of Botany* 75, 286-305. <https://doi.org/10.1002/j.1537-2197.1988.tb13441.x>
- 604
- 605 Björkman, T., Lowry, C., Shail Jr, J.W., Brainard, D.C., Anderson, D.S., Masiunas, J.B., 2015. Mustard  
606 cover crops for biomass production and weed suppression in the Great Lakes region. *Agron.  
607 J.* 107, 1235-1249. <https://doi.org/10.2134/agronj14.0461>
- 608 Blesh, J., 2018. Functional traits in cover crop mixtures: Biological nitrogen fixation and  
609 multifunctionality. *J. Appl. Ecol.* 55, 38-48. <https://doi.org/10.1111/1365-2664.13011>

610 Boyd, N.S., Brennan, E.B., Smith, R.F., Yokota, R., 2009. Effect of seeding rate and planting  
611 arrangement on rye cover crop and weed growth. *Agron. J.* 101, 47-51.  
612 <https://doi.org/10.2134/agronj2008.0059>

613 Brennan, E.B., Smith, R.F., 2005. Winter cover crop growth and weed suppression on the central  
614 coast of California. *Weed Technol* 19, 1017-1024. <https://doi.org/10.1614/wt-04-246r1.1>

615 Brooks, M.E., Kristensen, K., Van Benthem, K.J., Magnusson, A., Berg, C.W., Nielsen, A., Skaug, H.J.,  
616 Machler, M., Bolker, B.M., 2017. glmmTMB balances speed and flexibility among packages  
617 for zero-inflated generalized linear mixed modeling. *The R Journal* 9, 378-400.  
618 <https://journal.r-project.org/archive/2017/RJ-2017-066/RJ-2017-066.pdf>

619 Bybee-Finley, A.K., Cordeau, S., Yvoz, S., Mirsky, S.B., Ryan, M.R., 2022. Finding the right mix: a  
620 framework for selecting seeding rates for cover crop mixtures. *Ecol Appl* 32, e02484.  
621 <https://doi.org/10.1002/eap.2484>

622 Bybee-Finley, K.A., Mirsky, S.B., Ryan, M.R., 2017. Crop biomass not species richness drives weed  
623 suppression in warm-season annual grass-legume intercrops in the northeast. *Weed Sci* 65,  
624 669-680. <https://doi.org/10.1017/wsc.2017.25>

625 Chauvel, B., Guillemain, J.-P., Gasquez, J., Gauvrit, C., 2012. History of chemical weeding from 1944 to  
626 2011 in France: Changes and evolution of herbicide molecules. *Crop Protection* 42, 320-326.  
627 <http://dx.doi.org/10.1016/j.cropro.2012.07.011>

628 Christensen, S., 1995. Weed suppression ability of spring barley varieties. *Weed Res* 35, 241-247.  
629 <https://doi.org/10.1111/j.1365-3180.1995.tb01786.x>

630 Clark, A., Meisinger, J., Decker, A., Mulford, F., 2007. Effects of a grass-selective herbicide in a vetch-  
631 rye cover crop system on nitrogen management. <https://doi.org/10.2134/agronj2005.0361>

632 Cordeau, S., Guillemain, J.P., Reibel, C., Chauvel, B., 2015. Weed species differ in their ability to  
633 emerge in no-till systems that include cover crops. *Ann Appl Biol* 166, 444-455.  
634 <https://doi.org/10.1111/aab.12195>

635 Cordeau, S., Wayman, S., Reibel, C., Strbik, F., Chauvel, B., Guillemain, J.P., 2018. Effects of drought on  
636 weed emergence and growth vary with seed burial depth and presence of a cover crop.  
637 *Weed Biol Manag* 18, 12-25. <https://doi.org/10.1111/wbm.12136>

638 Cressman, S.T., Page, E.R., Swanton, C.J., 2011. Weeds and the red to far-red ratio of reflected light:  
639 Characterizing the influence of herbicide selection, dose, and weed species. *Weed Sci* 59,  
640 424-430. <https://doi.org/10.1614/WS-D-10-00166.1>

641 CTIC, 2017. Annual report of the 2016-2017 Cover crop survey. Center C.T.I. (Ed.) Joint Publication of  
642 the Conservation Technology Information Center, the North Central Region Sustainable  
643 Agriculture Research and Education Program, and the American Seed Trade Association West  
644 Lafayette, p. 46. [https://www.ctic.org/files/2017CTIC\\_CoverCropReport-FINAL.pdf](https://www.ctic.org/files/2017CTIC_CoverCropReport-FINAL.pdf)

645 Dorn, B., Jossi, W., van der Heijden, M.G., 2015. Weed suppression by cover crops: comparative on-  
646 farm experiments under integrated and organic conservation tillage. *Weed Res* 55, 586-597.  
647 <https://doi.org/10.1111/wre.12175>

648 Ellenberg, H., 1979. Indicator values of vascular plants in central Europe. *Scripta Geobotanica* 9, 7-  
649 122.

650 Evans, C.E., Etherington, J.R., 1990. The effect of soil water potential on seed germination of some  
651 British plants. *New Phytol.* 115, 539-548. <https://doi.org/10.1111/j.1469-8137.1990.tb00482.x>

652

653 Finney, D.M., Murrell, E.G., White, C.M., Baraibar, B., Barbercheck, M.E., Bradley, B.A., Cornelisse, S.,  
654 Hunter, M.C., Kaye, J.P., Mortensen, D.A., 2017. Ecosystem services and disservices are  
655 bundled in simple and diverse cover cropping systems. *Agricultural & Environmental Letters*  
656 2, 170033. <https://doi.org/10.2134/aer2017.09.0033>

657 Florence, A., McGuire, A., 2020. Do diverse cover crop mixtures perform better than monocultures?  
658 A systematic review. *Agron. J.* 112, 3513-3534. <https://doi.org/10.1002/agj2.20340>

659 Fox, J., Weisberg, S., 2020. Companion to applied regression. Version 3.0-8. Sage publications.  
660 <https://cran.r-project.org/web/packages/car/index.html>



661 Funk, J.L., Wolf, A.A., 2016. Testing the trait-based community framework: Do functional traits  
662 predict competitive outcomes? *Ecology* 97, 2206-2211. <https://doi.org/10.1002/ecy.1484>  
663 Gardarin, A., Dürr, C., Colbach, N., 2011. Prediction of germination rates of weed species:  
664 Relationships between germination speed parameters and species traits. *Ecol. Model.* 222,  
665 626-636. <https://doi.org/10.1016/j.ecolmodel.2010.10.005>  
666 Garnier, E., Navas, M.-L., 2012. A trait-based approach to comparative functional plant ecology:  
667 concepts, methods and applications for agroecology. A review. *Agron. Sustainable Dev.* 32,  
668 365-399. <https://doi.org/10.1007/s13593-011-0036-y>  
669 Gfeller, A., Herrera, J.M., Tschuy, F., Wirth, J., 2018. Explanations for *Amaranthus retroflexus* growth  
670 suppression by cover crops. *Crop Protection* 104, 11-20.  
671 <https://doi.org/10.1016/j.cropro.2017.10.006>  
672 Goldberg, D.E., 1990. Components of resource competition in plant communities. In: Grace, J.B.,  
673 Tilman, D. (Eds.), *Perspectives on plant competition*. Academic Press, Inc., London, UK, pp.  
674 27-49  
675 Guillemin, J.P., Gardarin, A., Granger, S., Reibel, C., Munier-Jolain, N., Colbach, N., 2013. Assessing  
676 potential germination period of weeds with base temperatures and base water potentials.  
677 *Weed Res* 53, 76-87. <https://doi.org/10.1111/wre.12000>  
678 Guinet, M., Nicolardot, B., Voisin, A.-S., 2020. Nitrogen benefits of ten legume pre-crops for wheat  
679 assessed by field measurements and modelling. *European Journal of Agronomy* 120, 126151.  
680 Hughes, G., 1990. The problem of weed patchiness. *Weed Res* 30, 223-224.  
681 <https://doi.org/10.1111/j.1365-3180.1990.tb01706.x>  
682 Kamrin, M.A., 1997. *Pesticide profiles: toxicity, environmental impact, and fate*. CRC press.  
683 Kiær, L.P., Weisbach, A.N., Weiner, J., 2013. Root and shoot competition: a meta-analysis. *Journal of*  
684 *Ecology* 101, 1298-1312. <https://doi.org/10.1111/1365-2745.12129>  
685 Lemaire, G., Gastal, F., 1997. N uptake and distribution in plant canopies. In: Lemaire, G. (Ed.),  
686 *Diagnosis of the nitrogen status in crops*. Springer-Verlag, Berlin, pp. 3-  
687 43. [http://dx.doi.org/10.1007/978-3-642-60684-7\\_1](http://dx.doi.org/10.1007/978-3-642-60684-7_1)  
688 Lenth, R.V., 2021. Estimated Marginal Means, aka Least-Squares Means. CRAN R package version  
689 1.6.0, 85. <https://cran.r-project.org/web/packages/emmeans/index.html>  
690 Louarn, G., Bedoussac, L., Gaudio, N., Journet, E.-P., Moreau, D., Jensen, E.S., Justes, E., 2021. Plant  
691 nitrogen nutrition status in intercrops—a review of concepts and methods. *European Journal*  
692 *of Agronomy* 124, 126229. <https://doi.org/10.1016/j.eja.2021.126229>  
693 MacLaren, C., Swanepoel, P., Bennett, J., Wright, J., Dehnen-Schmutz, K., 2019. Cover crop biomass  
694 production is more important than diversity for weed suppression. *Crop Sci.*  
695 <https://doi.org/10.2135/cropsci2018.05.0329>  
696 McLaughlin, A., Mineau, P., 1995. The impact of agricultural practices on biodiversity. *Agriculture,*  
697 *Ecosystems & Environment* 55, 201-212. [https://doi.org/10.1016/0167-8809\(95\)00609-V](https://doi.org/10.1016/0167-8809(95)00609-V)  
698 Mirsky, S.B., Ackroyd, V.J., Cordeau, S., Curran, W.S., Hashemi, M., Reberg-Horton, C.S., Ryan, M.R.,  
699 Spargo, J.T., 2017. Hairy vetch biomass across the Eastern United States: effects of latitude,  
700 seeding rate and date, and termination timing. *Agron. J.* 109, 1510-1519.  
701 <https://doi.org/10.2134/agronj2016.09.0556>  
702 Mirsky, S.B., Curran, W.S., Mortensen, D.M., Ryan, M.R., Shumway, D.L., 2011. Timing of cover-crop  
703 management effects on weed suppression in no-till planted soybean using a roller-crimper.  
704 *Weed Sci* 59, 380-389. <https://doi.org/10.1614/WS-D-10-00101.1>  
705 Mirsky, S.B., Ryan, M.R., Teasdale, J.R., Curran, W.S., Reberg-Horton, C.S., Spargo, J.T., Wells, M.S.,  
706 Keene, C.L., Moyer, J.W., 2013. Overcoming weed management challenges in cover crop–  
707 based organic rotational no-till soybean production in the eastern United States. *Weed*  
708 *Technol* 27, 193-203. <https://doi.org/10.1614/WT-D-12-00078.1>  
709 Möller, K., Stinner, W., Leithold, G., 2008. Growth, composition, biological N<sub>2</sub> fixation and nutrient  
710 uptake of a leguminous cover crop mixture and the effect of their removal on field nitrogen  
711 balances and nitrate leaching risk. *Nutrient Cycling in Agroecosystems* 82, 233-249.  
712 <https://doi.org/10.1007/s10705-008-9182-2>

713 Moreau, D., Busset, H., Matejcek, A., Munier-Jolain, N., 2014. The ecophysiological determinants of  
714 nitrophily in annual weed species. *Weed Res* 54, 335-346. [10.1111/wre.12090](https://doi.org/10.1111/wre.12090)  
715 Munier-Jolain, N., Biarnes, V., Chaillot, I., 2010. *Physiology of the pea crop*. CRC Press.  
716 <https://doi.org/10.1201/b10504>  
717 Navas, M.-L., 2012. Trait-based approaches to unravelling the assembly of weed communities and  
718 their impact on agro-ecosystem functioning. *Weed Res* 52, 479-488.  
719 <https://doi.org/10.1111/j.1365-3180.2012.00941.x>  
720 Nichols, V., English, L., Carlson, S., Gailans, S., Liebman, M., 2020. Effects of long-term cover cropping  
721 on weed seedbanks. *Front Agron* 2, 591091. <https://doi.org/10.3389/fagro.2020.591091>  
722 Nielsen, D.C., Lyon, D.J., Hergert, G.W., Higgins, R.K., Calderón, F.J., Vigil, M.F., 2015. Cover crop  
723 mixtures do not use water differently than single-species plantings. *Agron. J.* 107, 1025-1038.  
724 <https://doi.org/10.2134/agronj14.0504>  
725 Oerke, E.-C., 2006. Crop losses to pests. *The Journal of Agricultural Science* 144, 31-43.  
726 Oksanen, J., Blanchet, F.G., Friendly, M., Kindt, R., Legendre, P., McGlinn, D., Minchin, P.R., O'Hara,  
727 R.B., Simpson, G.L., Solymos, P., Stevens, M.H.H., Szoecs, E., Wagner, H., 2020. *Community*  
728 *Ecology Package*. CRAN R package version 2.5-7. <https://rdrr.io/cran/vegan/>  
729 Osipitan, O.A., Dille, J.A., Assefa, Y., Knezevic, S.Z., 2018. Cover crop for early season weed  
730 suppression in crops: Systematic review and meta-analysis. *Agron. J.* 110, 2211-2221.  
731 <https://doi.org/10.2134/agronj2017.12.0752>  
732 Osipitan, O.A., Dille, J.A., Assefa, Y., Radicetti, E., Ayeni, A., Knezevic, S.Z., 2019. Impact of cover crop  
733 management on level of weed suppression: a meta-analysis. *Crop Sci* 59, 833-842.  
734 <https://doi.org/10.2135/cropsci2018.09.0589>  
735 Perry, L.G., Neuhauser, C., Galatowitsch, S.M., 2003. Founder control and coexistence in a simple  
736 model of asymmetric competition for light. *Journal of Theoretical Biology* 222, 425-436.  
737 [https://doi.org/10.1016/S0022-5193\(03\)00055-9](https://doi.org/10.1016/S0022-5193(03)00055-9)  
738 Petit, S., Cordeau, S., Chauvel, B., Bohan, D., Guillemin, J.-P., Steinberg, C., 2018. Biodiversity-based  
739 options for arable weed management. A review. *Agron. Sustainable Dev.* 38.  
740 <https://doi.org/10.1007/s13593-018-0525-3>  
741 Powles, S.B., Yu, Q., 2010. Evolution in action: plants resistant to herbicides. *Annual Review of Plant*  
742 *Biology* 61, 317-347. <https://doi.org/10.1146/annurev-arplant-042809-112119>  
743 Pyšek, P., Lepš, J., 1991. Response of a weed community to nitrogen fertilization : a multivariate  
744 analysis. *Journal of Vegetable Science* 2, 237-244. <https://doi.org/10.2307/3235956>  
745 R Core Team, 2021. *R: A language and environment for statistical computing*. R Foundation for  
746 *Statistical Computing*, Vienna, Austria.  
747 Ranaldo, M., Carlesi, S., Costanzo, A., Bàrberi, P., 2020. Functional diversity of cover crop mixtures  
748 enhances biomass yield and weed suppression in a Mediterranean agroecosystem. *Weed Res*  
749 60, 96-108. <https://doi.org/10.1111/wre.12388>  
750 Ruis, S.J., Blanco-Canqui, H., Creech, C.F., Koehler-Cole, K., Elmore, R.W., Francis, C.A., 2019. Cover  
751 crop biomass production in temperate agroecozones. *Agron. J.* 111, 1535-1551.  
752 <https://doi.org/10.2134/agronj2018.08.0535>  
753 Ryan, M.R., Curran, W.S., Grantham, A.M., Hunsberger, L.K., Mirsky, S.B., Mortensen, D.A., Nord,  
754 E.A., Wilson, D.O., 2011. Effects of seeding rate and poultry litter on weed suppression from  
755 a rolled cereal rye cover crop. *Weed Sci* 59, 438-444. <https://doi.org/10.1614/WS-D-10-00180.1>  
756  
757 Sainju, U.M., 2017. Determination of nitrogen balance in agroecosystems. *MethodsX* 4, 199-208.  
758 <https://doi.org/10.1016/j.mex.2017.06.001>  
759 Simpson, G.L., 2019. *Functions for generating restricted permutations of data*. CRAN R package  
760 version 0.9-5. <https://cran.r-project.org/web/packages/permute/index.html>  
761 Smith, R.G., Atwood, L.W., Pollnac, F.W., Warren, N.D., 2015. Cover-crop species as distinct biotic  
762 filters in weed community assembly. *Weed Sci* 63, 282-295. <https://doi.org/10.1614/WS-D-14-00071.1>  
763

- 764 Smith, R.G., Gross, K.L., 2007. Assembly of weed communities along a crop diversity gradient. *J. Appl.*  
765 *Ecol.* 44, 1046-1056. <https://doi.org/10.1111/j.1365-2664.2007.01335.x>
- 766 Smith, R.G., Warren, N.D., Cordeau, S., 2020. Are cover crop mixtures better at suppressing weeds  
767 than cover crop monocultures? *Weed Sci* 68, 186-194. <https://doi.org/10.1017/wsc.2020.12>
- 768 Suter, M., Hofer, D., Lüscher, A., 2017. Weed suppression enhanced by increasing functional trait  
769 dispersion and resource capture in forage ley mixtures. *Agriculture, Ecosystems &*  
770 *Environment* 240, 329-339. <https://doi.org/10.1016/j.agee.2017.01.007>
- 771 Teasdale, J., Brandsaeter, L., Calegari, A., Neto, F.S., 2007. Cover crops and weed management. *Non*  
772 *chemical weed management principles. Concepts and Technology*, CABI, Wallingford, UK, 49-  
773 64.
- 774 Thomas, F., Archambeaud, M., 2016. *Les couverts végétaux: gestion pratique de l'interculture.*  
775 Editions France Agricole.
- 776 Tribouillois, H., Dürr, C., Demilly, D., Wagner, M.-H., Justes, E., 2016. Determination of germination  
777 response to temperature and water potential for a wide range of cover crop species and  
778 related functional groups. *Plos One* 11, e0161185.  
779 <https://doi.org/10.1371/journal.pone.0161185>
- 780 Tribouillois, H., Fort, F., Cruz, P., Charles, R., Flores, O., Garnier, E., Justes, E., 2015. A functional  
781 characterisation of a wide range of cover crop species: growth and nitrogen acquisition rates,  
782 leaf traits and ecological strategies. *Plos One* 10, e0122156.  
783 <https://doi.org/10.1371/journal.pone.0122156>
- 784 Trinder, C.J., Brooker, R.W., Davidson, H., Robinson, D., 2021. Directly quantifying multiple  
785 interacting influences on plant competition. *Plant, Cell & Environment* 44, 1268-1277.  
786 <https://doi.org/10.1111/pce.13944>
- 787 Uchino, H., Iwama, K., Jitsuyama, Y., Ichiyama, K., Sugiura, E., Yudate, T., 2011. Stable Characteristics  
788 of Cover Crops for Weed Suppression in Organic Farming Systems. *Plant Production Science*  
789 14, 75-85. <https://doi.org/10.1626/pp.14.75>
- 790 Voisin, A.-S., Salon, C., Munier-Jolain, N.G., Ney, B., 2002. Quantitative effects of soil nitrate, growth  
791 potential and phenology on symbiotic nitrogen fixation of pea (*Pisum sativum* L.). *Plant and*  
792 *Soil* 243, 31-42. <https://doi.org/10.1023/A:1019966207970>
- 793 Wilson, R.S., Hooker, N., Tucker, M., LeJeune, J., Doohan, D., 2009. Targeting the farmer decision  
794 making process: A pathway to increased adoption of integrated weed management. *Crop*  
795 *Protection* 28, 756-764. <https://doi.org/10.1016/j.cropro.2009.05.013>
- 796 Wittwer, R.A., Dorn, B., Jossi, W., van der Heijden, M.G.A., 2017. Cover crops support ecological  
797 intensification of arable cropping systems. *Scientific Reports* 7, 41911.  
798 <https://doi.org/10.1038/srep41911>

799

800

801

802 **Figures and tables**

803 **Table 1.** Cover crop (CC) species and seeding rates, used in 2 or 8 CC species  
 804 mixtures including (leg+) or not (leg-) legumes in year 1 (2016) and 2 (2017).  
 805 Seeding rates were computed as number of seeds m<sup>-2</sup> = [seeding rate in pure stand /  
 806 number of species in the mixture \* (1000/Thousand-seed weight)] majored by 15%.  
 807 Winter grasses in year 1 were replaced by summer grasses in year 2 to avoid grass  
 808 volunteers in the subsequent cereal crop.

809

Botanical family	CC species (latin name)	Seeding rate (number of seeds m <sup>-2</sup> )								Recommended pure stand (g m <sup>-2</sup> )‡	Thousand-seed weight in seed weight (g 1000 seeds <sup>-1</sup> )
		Year 1				Year 2					
		2leg-	2leg+	8leg-	8leg+	2leg-	2leg+	8leg-	8leg+		
<i>Poaceae</i>	Black oat ( <i>Avena strigosa</i> )		68	17						2	16.9
	Winter rye cv. Multicaule ( <i>Secale cereale</i> )	286		71	71					8	16.1
	Sorghum ( <i>Sorghum bicolor</i> )					33	8			1.5	26.3
	Foxtail millet cv. Early bird ( <i>Setaria italica</i> )						351	88	88	2.5	4.1
<i>Fabaceae</i>	Common vetch cv. Nacre ( <i>Vicia sativa</i> )		43		11		43		11	4	54
	Berseem clover cv. Tabor ( <i>Trifolium alexandrinum</i> )				90				90	2.5	4
	Faba bean cv. Irena ( <i>Vicia faba</i> )				3				3	10	490
	Brown hemp ( <i>Crotalaria juncea</i> )				14				14	3.5	36.8
<i>Brassicaceae</i>	Brown mustard cv. Vitamine ( <i>Brassica juncea</i> )			25	25			25	25	0.5	2.9
	Field mustard cv. Chicon ( <i>Brassica rapa</i> )			45	45			45	45	1	3.2
	Lacy phacelia ( <i>Phacelia tanacetifolia</i> )	288		72		288		72		1	2
Others	Niger seed cv. Regyne ( <i>Guizotia abyssinica</i> )			42	42			42	42	1	3.4
	Buckwheat cv. Harpe ( <i>Fagopyrum esculentum</i> )			22				22		3	20
	Linseed cv. Omegalin ( <i>Linum usitatissimum</i> )			38				38		2	7.5

810 ‡ (Thomas and Archambeaud, 2016)

811

812

813

814 **Table 2.** ANOVA table (type III Wald Chi-Square tests) highlighting the effect of year (as factor), fertilisation (N), irrigation (irr), cover  
815 crop mixture (CCm), and all possible interactions between these four factors on cover crop biomass, cover crop nitrogen uptake,  
816 cover crop nitrogen nutrition index (NNI), weed biomass and weed nitrogen uptake. Results were obtained with generalised mixed  
817 effect models using a tweedie distribution and a log link. Significant p-values at  $p < 0.05$  are highlighted in bold.

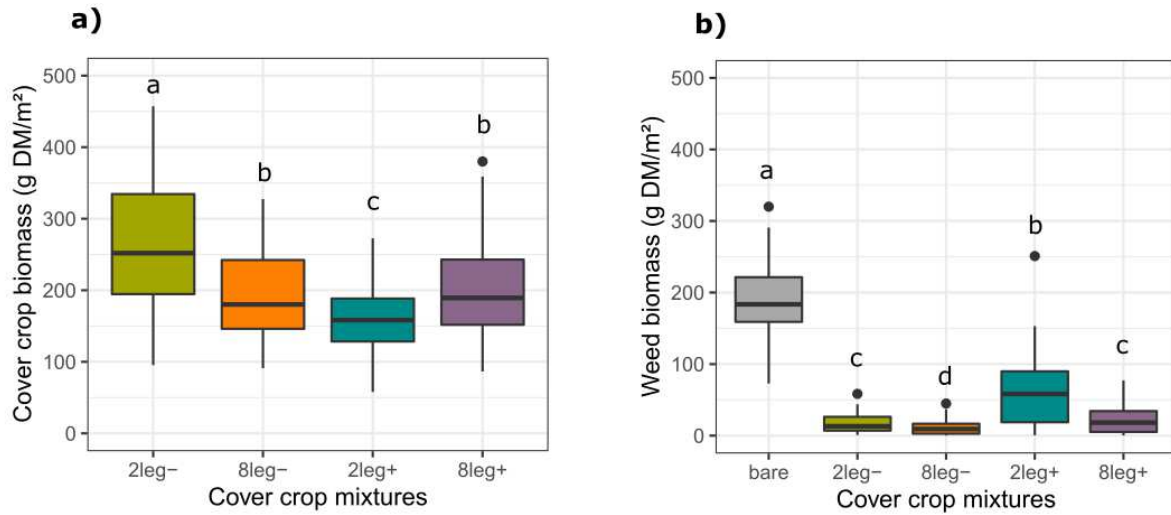
Factors	Cover crop									Weeds					
	Biomass			N quantity			NNI			Biomass			N quantity		
	$\chi^2$	df	p-value	$\chi^2$	df	p-value	$\chi^2$	df	p-value	$\chi^2$	df	p-value	$\chi^2$	df	p-value
year	0.12	1	0.72	7.74	1	<b>5e-03</b>	8.09	1	<b>4e-03</b>	105	1	<b>&lt; 2e-16</b>	230	1	<b>&lt; 2e-16</b>
N	121	1	<b>&lt; 2e-16</b>	64.4	1	<b>1e-15</b>	11.1	1	<b>9e-04</b>	1.72	1	0.19	1.37	1	0.24
irr	3.70	1	0.05	0.00	1	0.95	0.60	1	0.44	74.9	1	<b>&lt; 2e-16</b>	55.4	1	<b>1e-13</b>
CCm	265	3	<b>&lt; 2e-16</b>	145	3	<b>&lt; 2e-16</b>	389	3	<b>&lt; 2e-16</b>	2281	4	<b>&lt; 2e-16</b>	2412	4	<b>&lt; 2e-16</b>
year:N	1.69	1	0.19	10.6	1	<b>1e-03</b>	16.1	1	<b>6e-05</b>	23.7	1	<b>1e-06</b>	6.79	1	<b>0.01</b>
year:irr	0.23	1	0.63	0.21	1	0.65	0.12	1	0.73	3.97	1	<b>0.05</b>	0.86	1	0.35
N:irr	0.31	1	0.58	2.59	1	0.11	6.69	1	<b>0.01</b>	0.64	1	0.42	1.29	1	0.26
year:CCm	29.3	3	<b>2e-06</b>	106	3	<b>&lt; 2e-16</b>	122	3	<b>&lt; 2e-16</b>	180	4	<b>&lt; 2e-16</b>	297	4	<b>&lt; 2e-16</b>
N:CCm	31.6	3	<b>6e-07</b>	36.8	3	<b>5e-08</b>	19.6	3	<b>2e-04</b>	31.1	4	<b>3e-06</b>	27.2	4	<b>2e-05</b>
irr:CCm	15.7	3	<b>1e-03</b>	9.31	3	<b>0.03</b>	3.07	3	0.38	29.3	4	<b>7e-06</b>	40.4	4	<b>4e-08</b>
year:N:irr	3.72	1	0.05	0.06	1	0.81	2.37	1	0.12	0.11	1	0.74	0.24	1	0.62
year:N:CCm	11.4	3	<b>0.01</b>	18.1	3	<b>4e-04</b>	15.9	3	<b>1e-03</b>	19.7	4	<b>6e-04</b>	10.1	4	<b>0.04</b>
year:irr:CCm	10.6	3	<b>0.01</b>	2.92	3	0.40	0.45	3	0.93	16.6	4	<b>2e-03</b>	17.4	4	<b>1e-03</b>
N:irr:CCm	6.34	3	0.10	3.66	3	0.30	4.61	3	0.20	5.92	4	0.21	1.38	4	0.85
year:N:irr:CCm	3.47	3	0.32	2.38	3	0.50	3.50	3	0.32	3.01	4	0.56	1.07	4	0.90

819 **Table 3.** ANOVA table (type III Wald Chi-Square tests) highlighting the effect of year  
 820 (as factor), cover crop mixture (CCm), cover crop biomass (CC\_biomass) and all  
 821 possible interactions between these three factors on weed biomass. Results were  
 822 obtained with generalised mixed effect models using a tweedie distribution and a log  
 823 link. Significant p-values at  $p < 0.05$  are highlighted in bold.

Variables	Weed biomass		
	$\chi^2$	df	p-value
year	38.9	<b>1</b>	<b>5e-10</b>
CCm	135	<b>3</b>	<b>&lt; 2e-16</b>
CC_biomass	50.1	<b>1</b>	<b>1e-12</b>
year:CCm	37.0	<b>3</b>	<b>5e-08</b>
year:CC_biomass	27.4	<b>1</b>	<b>2e-07</b>
CCm:CC_biomass	15.9	<b>3</b>	<b>1e-03</b>
year:CCm:CC_biomass	13.5	<b>3</b>	<b>4e-03</b>

824

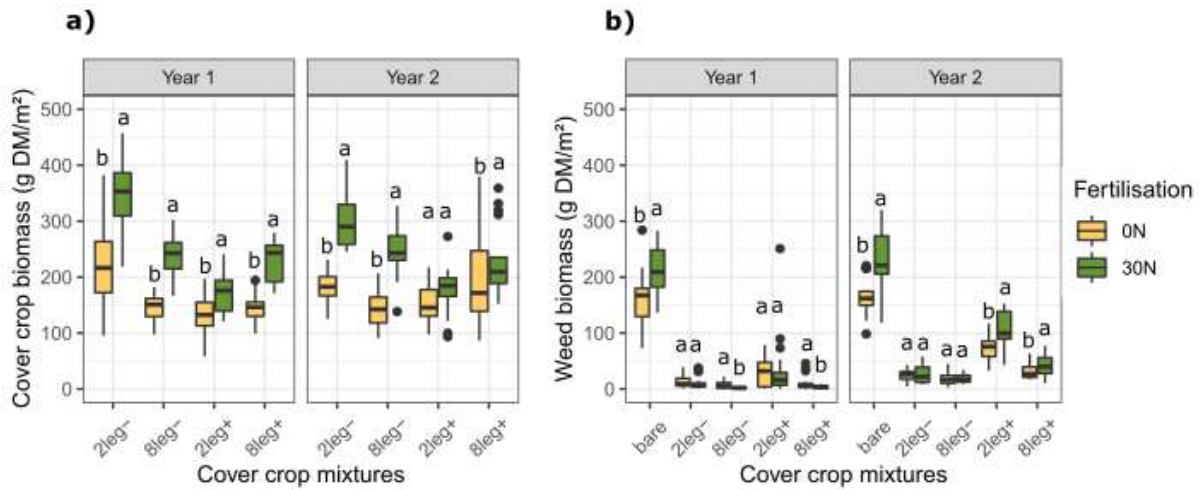
825 **Fig. 1.** Effect of cover crop mixtures on a) cover crop (CC) biomass (g of dry matter  
 826 (DM)/m<sup>2</sup>, N=288) and b) weed biomass (N=360). Data from year 1 and 2 were  
 827 pooled. Boxplots sharing the same letter are not significantly different at p < 0.05.  
 828 bare: bare soil control; 2leg-: 2 CC species without legumes; 8leg-: 8 CC species  
 829 without legumes; 2leg+: 2 CC species with legumes; 8leg+: 8 CC species with  
 830 legumes.



831

832

833 **Fig. 2.** Effect of nitrogen fertilisation rate on a) cover crop (CC) biomass (g of dry  
 834 matter (DM)/m<sup>2</sup>, N=288) and b) weed biomass (N=360) for each combination of CC  
 835 mixture and year. Comparisons are made between 0N to 30N for each combination  
 836 of CC mixture and year, boxplots sharing the same letter are not significantly different  
 837 at  $p < 0.05$ . 0N: no nitrogen fertilisation, 30N: 30 kg N ha<sup>-1</sup> of ammonium nitrate at  
 838 CC/weeds sowing; bare: bare soil control; 2leg-: 2 CC species without legumes; 8leg-  
 839 : 8 CC species without legumes; 2leg+: 2 CC species with legumes; 8leg+ : 8 CC  
 840 species with legumes.

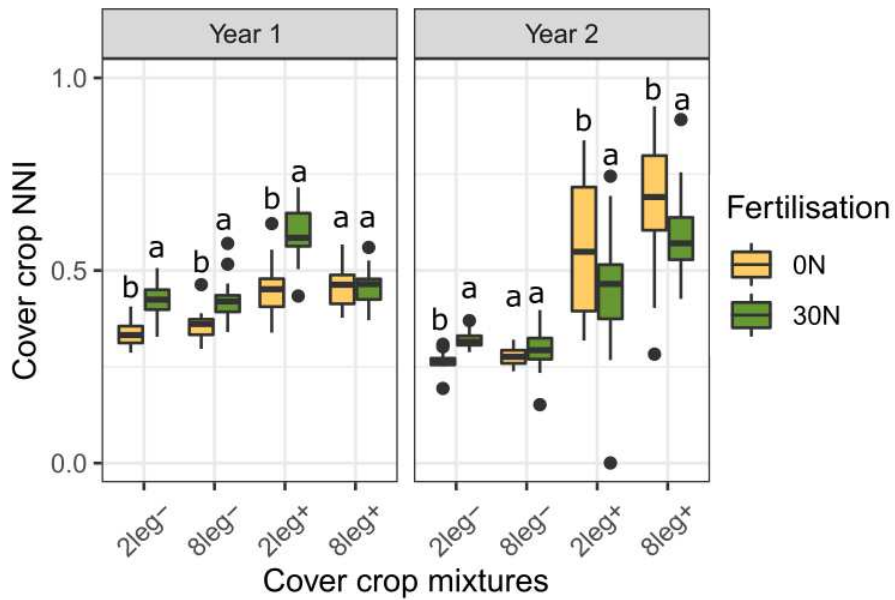


841

842

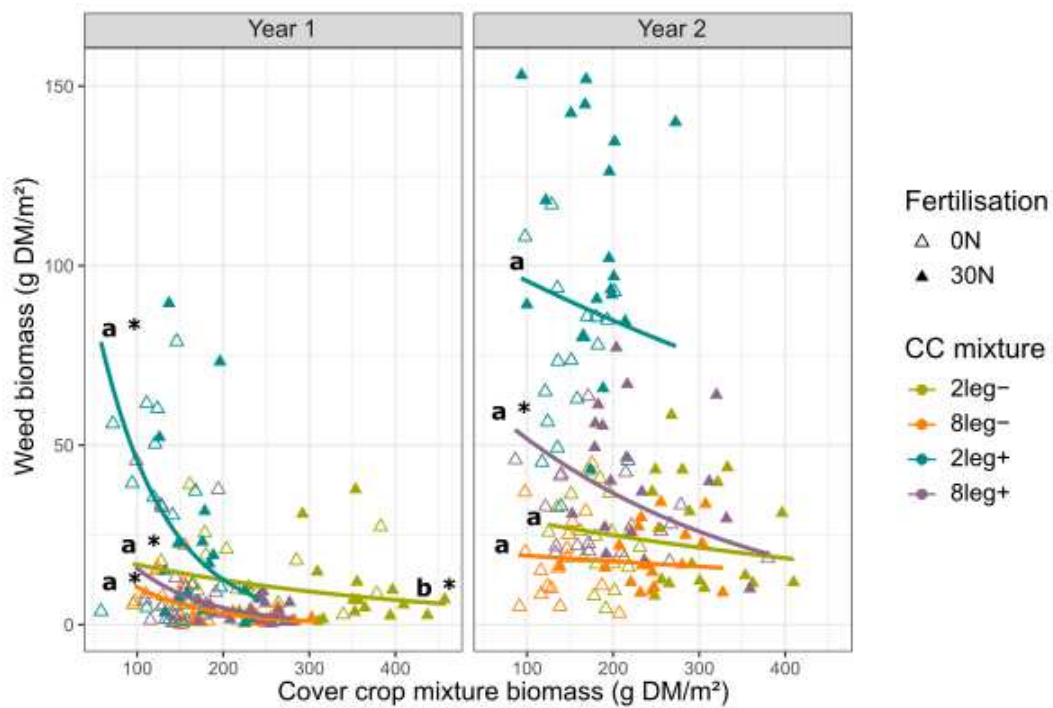


843 **Fig. 3.** Effect of nitrogen fertilisation rate on cover crop (CC) nitrogen nutrition index  
 844 (NNI, unitless) (N=288) for each combination of CC mixture and year. Comparisons  
 845 are made from 0N to 30N for each combination of CC mixture and year, boxplots  
 846 sharing the same letter are not significantly different at  $p < 0.05$ . 0N: no nitrogen  
 847 fertilisation, 30N: 30kg N ha<sup>-1</sup> of ammonium nitrate at CC/weeds sowing; 2leg<sup>-</sup>: 2 CC  
 848 species without legumes; 8leg<sup>-</sup>: 8 CC species without legumes; 2leg<sup>+</sup>: 2 CC species  
 849 with legumes; 8leg<sup>+</sup>: 8 CC species with legumes.



850

851 **Fig. 4.** Interaction between cover crop (CC) mixture biomass (g of dry matter  
 852 (DM)/m<sup>2</sup>) and CC mixture identity on weed biomass in year 1 and 2. Effect of nitrogen  
 853 fertilisation was partially redundant with cover crop mixture biomass so nitrogen  
 854 fertilisation levels were simply distinguished graphically. Predictions were based on  
 855 generalised linear mixed model taking into account random effect (Supp. Table 2).  
 856 The regression lines show an average value (*i.e.* population level slope). Slopes  
 857 sharing the same letter are not significantly different at  $p < 0.05$ . Slopes significantly  
 858 different from zero are indicated with an asterisk. 0N: no fertilisation; 30N: 30kg N ha<sup>-1</sup>  
 859 of ammonium nitrate at CC/weeds sowing; 2leg-: 2 CC species without legumes;  
 860 8leg-: 8 CC species without legumes; 2leg+: 2 CC species with legumes; 8leg+: 8 CC  
 861 species with legumes.



862  
 863  
 864  
 865