



HAL
open science

The ZKIR assay, a novel real-time PCR method for the detection of *Klebsiella pneumoniae* and closely related species in environmental Samples

Elodie Barbier, Carla Rodrigues, Géraldine G. Depret, Virginie Passet, Laurent Gal, Pascal Piveteau, Sylvain Brisse

► To cite this version:

Elodie Barbier, Carla Rodrigues, Géraldine G. Depret, Virginie Passet, Laurent Gal, et al.. The ZKIR assay, a novel real-time PCR method for the detection of *Klebsiella pneumoniae* and closely related species in environmental Samples. *Applied and Environmental Microbiology*, 2020, 86 (7), pp.1-39. 10.1128/AEM.02711-19 . hal-02464159

HAL Id: hal-02464159

<https://institut-agro-dijon.hal.science/hal-02464159>

Submitted on 7 Feb 2020

HAL is a multi-disciplinary open access archive for the deposit and dissemination of scientific research documents, whether they are published or not. The documents may come from teaching and research institutions in France or abroad, or from public or private research centers.

L'archive ouverte pluridisciplinaire **HAL**, est destinée au dépôt et à la diffusion de documents scientifiques de niveau recherche, publiés ou non, émanant des établissements d'enseignement et de recherche français ou étrangers, des laboratoires publics ou privés.



Distributed under a Creative Commons Attribution 4.0 International License

1 **The ZKIR Assay, a novel Real-Time PCR Method for the Detection of**
2 *Klebsiella pneumoniae* and Closely Related Species
3 **in Environmental Samples**

4
5
6 Elodie Barbier^{a#}, Carla Rodrigues^b, Geraldine Depret^a, Virginie Passet^b, Laurent Gal^a, Pascal
7 Piveteau^a and Sylvain Brisse^{b#}

8
9 ^a Agroécologie, AgroSup Dijon, CNRS, INRA, Univ. Bourgogne Franche-Comté, Dijon, France

10 ^b Institut Pasteur, Biodiversity and Epidemiology of Bacterial Pathogens, Paris, France

11
12 Running title: Detection of *Klebsiella pneumoniae* by real-time PCR

13
14 # Corresponding authors

15 Sylvain Brisse:

16 Institut Pasteur, Biodiversity and Epidemiology of Bacterial Pathogens, 28 rue du Docteur Roux,
17 F-75724 Paris, France; E-mail: sylvain.brisse@pasteur.fr; Phone +33 1 45 68 83 34

18 Elodie Barbier:

19 Agroécologie, AgroSup Dijon, CNRS, INRA, Univ. Bourgogne Franche-Comté, 17 rue Sully, F-
20 21000 Dijon, France; E-mail: elodie.barbier@inrae.fr; Phone +33 3 80 69 33 24

21
22 **Keywords:** *Klebsiella*, phylogroup, soil, detection, screening, ZKIR qPCR, culture method

23

24

25 **ABSTRACT**

26 *Klebsiella pneumoniae* (Kp) is of growing public health concern due to the emergence of strains
27 that are multidrug-resistant, virulent, or both. Taxonomically, Kp includes seven phylogroups,
28 with Kp1 (*K. pneumoniae sensu stricto*) being medically prominent. Kp can be present in
29 environmental sources such as soils and vegetation, which could act as reservoirs of animal and
30 human infections. However, the current lack of screening methods to detect Kp in complex
31 matrices limits research on Kp ecology. Here we analysed 1,001 genome sequences and found
32 that existing molecular detection targets lack specificity for Kp. A novel real-time PCR method,
33 the ZKIR assay, was developed and used to detect Kp in 96 environmental samples. Results were
34 compared to a culture-based method using Simmons citrate agar with 1% inositol (SCAI)
35 medium coupled to MALDI-TOF mass spectrometry identification. Whole-genome sequencing
36 of environmental Kp was performed.

37 The ZKIR assay was positive for the 48 tested Kp reference strains, whereas 88 non-Kp strains
38 were negative. The limit of detection of Kp in spiked soil microcosms was 1.5×10^{-1} CFU g⁻¹
39 after enrichment for 24 h in LB supplemented with ampicillin, and 1.5×10^3 to 1.5×10^4 CFU g⁻¹
40 directly after soil DNA extraction. The ZKIR assay was more sensitive than the culture method.
41 Kp was detected in 43% of environmental samples. Genomic analysis of the isolates revealed a
42 predominance of phylogroups Kp1 (65%) and Kp3 (32%), a high genetic diversity (23 MLST
43 sequence types), a quasi-absence of antibiotic resistance or virulence genes, and a high frequency
44 (50%) of O-antigen type 3. This study shows that the ZKIR assay is an accurate, specific and
45 sensitive novel method to detect the presence of Kp in complex matrices, and indicates that Kp
46 isolates from environmental samples differ from clinical isolates.

47

48

49 **IMPORTANCE**

50 The *Klebsiella pneumoniae* species complex (Kp) includes human and animal pathogens, some of
51 which are emerging as hypervirulent and/or antibiotic resistant strains. These pathogens are
52 diverse and classified into seven phylogroups, which may differ in their reservoirs and
53 epidemiology. Proper management of this public health hazard requires a better understanding of
54 Kp ecology and routes of transmission to humans. So far, detection of these microorganisms in
55 complex matrices such as food or the environment has been difficult due to a lack of accurate and
56 sensitive methods. Here, we describe a novel method based on real-time PCR, which enables
57 detection of all Kp phylogroups with high sensitivity and specificity. We used this method to
58 detect Kp isolates from environmental samples, and show based on genomic sequencing that they
59 differ in antimicrobial resistance and virulence gene content, from human clinical Kp isolates.
60 The ZKIR PCR assay will enable rapid screening of multiple samples for Kp presence and will
61 thereby facilitate tracking the dispersal patterns of these pathogenic strains across environmental,
62 food, animal and human sources.

63 **INTRODUCTION**

64 *Klebsiella pneumoniae* (Kp) is one of the leading causes of multidrug resistant (MDR)
65 healthcare-acquired infections, with increasing rates of resistance to carbapenems and other last
66 resort antibiotics being reported (1, 2). Furthermore, Kp is also an important agent of severe
67 community-acquired infections (so-called ‘hypervirulent’ strains) in healthy persons (3), with
68 recent worrisome reports of convergence between hypervirulent and MDR phenotypes (1, 4). Kp
69 is recognized as a colonizer of the throat and the intestinal tract of humans and animals (5–7).

70 The main sources of human exposure to Kp are not well defined. Previous studies
71 highlighted the large distribution of Kp in outdoor environments, including water, sewage, soil
72 and plants (8–13). Animal and human food, particularly retail meat or salad may also be
73 contaminated (6, 14, 15). Many studies suggest that food, water and/or environmental exposure
74 may be associated with virulent and/or antibiotic resistant Kp to humans (13, 14, 16, 17).
75 However, little is known on the relative contribution of these different sources of transmission.
76 Although such information is a prerequisite to control efficiently transmission routes and reduce
77 exposure, the ecology of Kp is currently poorly understood.

78 The systematics of Kp has been refined through recent taxonomic updates, which
79 highlighted the existence of seven phylogroups (Kp1 to Kp7), corresponding to distinct taxa,
80 within *Klebsiella pneumoniae sensu lato*. The *K. pneumoniae* species complex includes 5
81 different species: *K. pneumoniae sensu stricto* (phylogroup Kp1), *K. quasipneumoniae* [subsp.
82 *quasipneumoniae* (Kp2) and subsp. *similipneumoniae* (Kp4)], *K. variicola* [subsp. *variicola*
83 (Kp3) and subsp. *tropica* (Kp5)], ‘*K. quasivariicola*’ (Kp6) and *K. africana* (Kp7) (8, 18–20).
84 Most of these taxa are still often misidentified as “*K. pneumoniae*” or “*K. variicola*” due to the
85 unsuitability of traditional clinical microbiology methods to distinguish among members of the
86 Kp complex (21). Henceforth, we will use the ‘Kp’ abbreviation to refer collectively to the seven

87 taxa of the *K. pneumoniae* species complex, and will reserve '*K. pneumoniae*' for *K. pneumoniae*
88 *sensu stricto* (i.e., phylogroup Kp1). As all Kp are potentially pathogenic for humans and animals
89 and can share acquired resistance and virulence genes, it is important that the seven taxa be
90 considered together when investigating the routes of transmission and ecology of Kp.

91 Detection of Kp is not well integrated in food or environmental microbiological surveillance
92 programs and there is a general lack of tools and procedures for its detection and quantification.
93 Culture-based laboratory methods used for the detection of microorganisms in complex matrices
94 are time consuming and have a low throughput. Moreover, Kp culture methods have not been
95 validated so far for food safety screening. Some molecular methods (without need of sequencing)
96 have been proposed over the years for the rapid detection of Kp (22–26). They target the 16S-23S
97 rRNA internal transcribed spacer sequence (ITS) (22), coding sequences of *tyrB* (26), *khe* (25,
98 27), chromosomal beta-lactamase (*bla*) genes (28, 29) or other molecular targets (23). Some of
99 these targets are described as able to detect the Kp complex (22), whereas others were designed
100 for specific members of the Kp complex, such as Kp1 and Kp3 (23, 24).

101 Real-time PCR is a powerful approach for the rapid detection and quantification of micro-
102 organisms in complex matrices (30). This approach presents multiple advantages including easy
103 standardization and high throughput. The aims of this work were (i) To define the phylogenetic
104 distribution of previously proposed molecular targets for Kp detection, in light of recent
105 taxonomic updates; and (ii) To develop a real-time PCR method for the rapid, specific and
106 sensitive detection of all Kp members. (iii) In addition, we used the novel qPCR method to detect
107 Kp in environmental samples and explored the genomic features (including antibiotic resistance
108 and virulence genes) of the recovered Kp isolates.

109 **MATERIALS AND METHODS**

110 **Bacterial strains and culture conditions**

111 A panel of 136 strains from the collections of the Institut Pasteur, Paris (France) and INRA Dijon
112 (France) was used (Table 1). It included the *K. pneumoniae* type strain ATCC13883^T and 47
113 other strains of the Kp complex (Kp1 to Kp7 phylogroups, including type strains) isolated from
114 patients, animals and outdoor environments from multiple geographic locations. Eighty-eight
115 non-Kp bacterial strains from other species of the genus *Klebsiella*, closely related genera
116 (*Raoultella*, *Enterobacter*), and from other species that have similar environmental niches were
117 included for comparison. All strains were regenerated by streaking on tryptone soya agar (TSA,
118 Conda, Spain). After 24h at 37°C, single colonies were transferred to 10 ml tryptone soya broth
119 (TSB, Conda, Spain). Bacterial suspensions were collected after 24 h incubation at 37°C for
120 further experiments.

121

122 **Bacterial DNA extraction**

123 The bacterial DNA was extracted according to a homemade protocol. One ml of the 24h bacterial
124 culture was centrifuged (7000 g, 10 min, 4°C), the pellet washed with sterile water and suspended
125 in 800 µl Tris (50 mM, pH 8) in which 10 µl EDTA (500 mM, pH 8), 115 µl lysozyme (10
126 mg/ml, incubation 37°C, 30 min), 57 µl SDS 20% (incubation 65°C, 15 min), 5 µl RNase (10
127 mg/ml, incubation 37°C, 30 min) and 23 µl proteinase K (6 mg/ml, incubation 37°C, 1h30) were
128 added. Finally, a 1:1 volume of chloroform/ isoamyl alcohol (25/24/1) was added. The
129 suspension was shaken 3 min at 15 rpm, then centrifuged 3 min at 20 000 g. The supernatant was
130 transferred in a new tube and a 1:1 volume of chloroform/ isoamyl alcohol (24/1) was added.
131 After shaking (3 min, 25 rpm) and centrifugation (3 min, 20 000 g), this step was repeated once.
132 After transfer of the supernatant in a new tube, a 1:10 volume of NaCl (5 M) was added (shaking

133 1 min, 15 rpm). Finally, a 1:1 volume of isopropanol (shaking 3 min, 15 rpm) was added.
134 Precipitated DNA filaments were collected with a glass Pasteur pipette and transferred in 400 μ l
135 frozen ethanol (70%). After shaking 3 min at 15 rpm, DNA filaments were collected, dried at
136 room temperature and finally dissolved in 100 μ l TE (pH 8). DNA concentration was estimated
137 using NanoDrop 2000 Spectrophotometer (ThermoFischer Scientific, USA) and adjusted at 20
138 ng/ μ l. Purified DNA was stored at -20°C.

139 A simpler protocol was implemented for the PCR specificity assay and validation study. Bacteria
140 grown in TSB or enrichment medium were centrifuged 5 min at 13 000 g. Pellets were suspended
141 in 200 μ l of Tris HCl (5 mM pH 8.2) supplemented with 13 μ l of Proteinase K (1 mg/ml). After 2
142 h incubation at 55 °C, Proteinase K was inactivated during 10 min boiling. Cell debris were
143 discarded by centrifugation (5 min at 13 000 g) and the supernatant was stored at -20°C before
144 use for real-time PCR.

145

146 **Soil DNA extraction**

147 Soil metagenomic DNA was extracted from 2 g aliquots of soil using the modified ISO standard
148 11063 method (31). Crude soil DNA extracts were first purified onto PVPP
149 (polyvinylpyrrolidone) minicolumns (BIORAD, France), then with the GeneClean Turbo kit
150 (MP Biomedicals, France) according to the manufacturer's protocol (31). Purified DNA
151 concentrations were determined using a Nanodrop 2000 spectrophotometer.

152

153 ***In silico* identification of the target DNA region**

154 The phylogenetic distribution of molecular targets that were previously described in the literature
155 for Kp detection, was investigated *in silico*. All available Kp genomes were downloaded from the
156 NCBI database (n=3552, February 2018) and combined with the ones of Institut Pasteur's

157 internal reference collection (n=670) (20, 32, 33), representing a total of 4,222 genomes which
158 included *Klebsiella* species and closely related *Raoultella* species. The average nucleotide
159 identity (ANI) metric was used to classify the Kp genomes in each of the phylogroups. To avoid
160 redundancy in the dataset and due to the difficulty of analyzing phylogenetically 4,222 genomes,
161 in the case of the genomes belonging to the Kp complex (which represented the majority of the
162 dataset), we selected unique representatives of each MLST sequence type (ST), as defined using
163 the *mlst* software tool (<https://github.com/tseemann/mlst>). This resulted in a final collection of
164 1,001 genomes that were tested for the presence of targets from the literature. Nucleotide BLAST
165 (BLASTN) was used to detect the presence of the target sequences in the 1,001 genomes, with
166 80% nucleotide identity (also with 92% in the case of *bla*_{SHV}, *bla*_{OKP} and *bla*_{LEN} targets) and 80%
167 length coverage as cutoffs. Primer-blast (<https://www.ncbi.nlm.nih.gov/tools/primer-blast/>) was
168 used (with default parameters) to check the distribution of primer target sites in the genomic
169 sequences. Specificity was defined as the proportion of target organisms among those expected to
170 be amplified by the target assay. Sensitivity was defined as the proportion of target organisms
171 expected to be amplified by the target assay. A phylogenetic tree was constructed (34) and the
172 output was visualized using iTOL (<https://itol.embl.de/>; Figure 1; Figure S1).

173

174 **Design of primers**

175 The Kp *tyrB* and *khe* gene sequences (accession numbers: AF074934.1 and AF293352.1) were
176 aligned against the genome sequences of *K. pneumoniae* (CP012744.1, CP012743.1,
177 CP028787.1), *K. variicola* (CP008700.1, CP013985.1, CP017289.1), *K. quasipneumoniae*
178 (CP014071.1, CP023478.1, CP029432.1) and *K. quasivariicola* (CP022823.1) using BLASTN to
179 identify conserved genomic regions within the Kp complex. Sequences of closely related
180 bacterial species *K. oxytoca* (CP027426.1), *Raoultella ornithinolytica* (CP010557.1),

181 *R. planticola* (CP026047.1) and *K. aerogenes* (CP014029.2) were added in the alignments to
182 confirm the specificity of these regions for the Kp complex.
183 Primer sets were designed using Primer3Plus ([http://www.bioinformatics.nl/cgi-](http://www.bioinformatics.nl/cgi-bin/primer3plus/primer3plus.cgi)
184 [bin/primer3plus/ primer3plus.cgi](http://www.bioinformatics.nl/cgi-bin/primer3plus/primer3plus.cgi)). The specificity of the predicted primer sets and amplicons was
185 checked by applying BLASTN on the GenBank nucleotide collection (nr/nt) from the NCBI
186 database and Multiple primer analyzer (<https://www.thermofisher.com>) was run to check for
187 dimer formation. The best candidate primer sets defined by this *in silico* approach were ordered
188 for synthesis at Eurogentec; among these was primer pair ZKIR_F (5'-CTA-AAA-CCG-CCA-
189 TGT-CCG-ATT-TAA-3') and ZKIR_R (5'-TTC-CGA-AAA-TGA-GAC-ACT-TCA-GA-3').
190

191 **Real-time PCR**

192 All real-time PCR assays were performed on an ABI StepOne™ Real-time thermocycler (Fisher
193 Scientific, France) with the following temperature program: 95 °C for 3 min and 40 cycles at
194 95 °C 10 s and 60 °C for 1 min. Melt curves were generated with temperature increments of
195 0.3 °C per cycle from 60 to 95 °C. DNA was amplified in a 20 µl PCR mix containing 10 µl of
196 Takyon Low Rox SYBR MasterMix dTTP Blue (Eurogentec, Belgium), 2 µl of each primer
197 (final concentration 300 nM), 2.5 µl of template DNA and 3.5 µl PCR grade water. For detection
198 of Kp from environmental samples, 0.5 µl of T4 Gene 32 Protein (Sigma Aldrich) was added to
199 the PCR mix. The specificity and cross-reactivity of the ZKIR assay was evaluated with 2 ng of
200 purified DNA of 48 Kp complex strains and 88 non-Kp isolates (Table 1).

201 Two universal primers targeting a 174 base pairs region of the *16S rRNA* gene of Eubacteria,
202 341f (5'-CCT-ACG-GGA-GGC-AGC-AG-3') and 515r (5'-ATT-CCG-CGG-CTG-GCA-3'),
203 were used for positive control PCR reactions as described in a previous report (35).

204

205 **Standard curve development and sensitivity assessment**

206 Aliquots of 2.5 µl adjusted to 7.5 ng, 750 pg, 75 pg, 7.5 pg, 750 fg, 375 fg, 45 fg and 15 fg of
207 genomic DNA of *K. pneumoniae* ATCC13883^T were prepared in triplicate and amplified with the
208 optimized PCR conditions described above. Results were analysed with the StepOne™ Data
209 Analysis software. PCR efficiency was determined. The genome number expressed as logarithm
210 was plotted against Ct values and the correlation coefficient (R^2) of the standard curve was
211 calculated.

212

213 **Comparison of the ZKIR PCR and culture methods for detection of Kp in environmental**
214 **samples**

215 Ninety-six environmental samples collected between July and September 2018 (23 in July; 39 in
216 August and 34 in September) in Auxonne (Burgundy, France) were analysed for Kp presence
217 using the ZKIR assay and culture methods in parallel. Samples corresponded to bulk soils (n=32),
218 roots (31), leaves (29) and irrigation water (4) and were processed in the lab within 24 hours after
219 sampling. Ten g of soil were weighed in 180 ml pots (Dutscher, France). Plant leaves and roots
220 were properly cut, cleaned with sterile water and transferred in 180 ml pots. Processed samples
221 were suspended in 90 ml of lysogeny broth (LB, 5 g of NaCl, 5 g of yeast extract and 10 g of
222 Tryptone for a 1 l final volume) supplemented with ampicillin (10 mg/l, ampicillin sodium salt,
223 Sigma Aldrich). Five hundred millilitres of water samples were filtered through a 0.25 µm
224 membrane (Millipore, France). The membrane was incubated in 20 ml of LB supplemented with
225 ampicillin as described above. After 24 h of incubation at 30 °C, enrichments were vortexed and
226 500 µl aliquots were centrifuged (5 min at 5800 × g) and washed with sterile water. The pellet
227 was suspended in 500 µl of sterile water and boiled for 10 min. Boiled enrichments were ten-fold
228 diluted (1:10 and 1:100) and the dilutions were used as template for real-time PCR.

229 In parallel, enrichments were serially diluted (1:10 to 1:10 000) in sterile water before plating on
230 Simmons Citrate Agar enriched with 1% inositol (SCAI medium) (36). Plates were incubated 48
231 h at 37 °C. Each plate was screened for presumptive colonies of *Klebsiella* (large, yellow, dome-
232 shaped colonies) and ten candidate colonies were purified on SCAI medium and identified using
233 Matrix Assisted Laser Desorption Ionization Time of Flight (MALDI-TOF) Mass Spectrometry
234 (MALDI Biotyper, Bruker) according to the MALDI Biotyper Compass database version 4.1.80
235 (Bruker Daltonics, Germany). In addition, whole-genome sequencing (WGS) was performed for
236 environmental Kp isolates (n=31) using the NextSeq-500 sequencing platform (Nextera XT
237 library; 2×150 nt). Genomic assemblies were obtained using SPAdes v3.9. Multilocus sequence
238 typing (MLST) and core-genome MLST (cgMLST) were performed using the BIGSdb-Kp web
239 tool (<https://bigsdb.pasteur.fr/klebsiella/klebsiella.html>). This resource coupled with Kleborate
240 (<https://github.com/katholt/Kleborate>) was used to search for antibiotic resistance, virulence and
241 heavy metal tolerance genes, and to predict capsular types. PlasmidFinder was used to look for
242 plasmid replicons (<https://cge.cbs.dtu.dk/services/PlasmidFinder/>). To construct the tree based on
243 *nif* cluster genes (Figure S2), the DNA region between *nifQ* and *nifJ* genes was extracted from
244 the *nif* carrying strains and from a set of reference strains carrying this cluster (37). Sequences
245 were aligned with MUSCLE, and IQ-TREE (<http://iqtree.cibiv.univie.ac.at>) was used to
246 reconstruct the maximum likelihood phylogeny using the HKY+I+F+G4 model.

247

248 **Determination of the limit of detection of the ZKIR assay in artificially spiked soils**

249 Two soils with contrasted edaphic characteristics (Sandy soil A; clay soil V) and free of
250 indigenous Kp, according to the above procedure, were used. A bacterial suspension of
251 *K. pneumoniae* ATCC13883^T was serially diluted in sterile water and dilutions were enumerated
252 on TSA plates. Five grams aliquots of each soil were spiked with these decreasing Kp dilutions,

253 resulting in final concentrations from 1.5×10^4 cfu/g to 1.5×10^{-1} cfu/g. Soil samples were
254 prepared in triplicates with three independently grown inoculums at 4 dilutions (36 spiked
255 microcosms for each soil). Negative controls were prepared by adding the same volume of sterile
256 water (3 microcosms for each soil). All 78 spiked and control soil microcosms were enriched for
257 24 h at 30 °C in 45 ml of LB supplemented with ampicillin (10 mg/l, Sigma Aldrich). Five
258 hundred μ l aliquots of enrichment broth were sampled before and after the 24-h enrichment step,
259 centrifuged 5 min at 5800 g and washed with sterile water. The pellet was suspended in 500 μ l of
260 sterile water and boiled for 10 min. Boiled enrichments were serially ten-fold diluted (1:10 to
261 1:100 000) and the diluted suspensions were used for real-time PCR. Moreover, metagenomic
262 DNA was extracted from spiked soils as described above in ‘Soil DNA extraction’ paragraph.

263

264 **Data availability**

265 The detailed ZKIR qPCR operating procedure was made publicly accessible to the scientific
266 community through the protocols.io platform (<https://dx.doi.org/10.17504/protocols.io.7n6hmhe>).
267 Genomic sequences generated in this study were submitted to the European Nucleotide Archive
268 and are accessible under the BioProject number PRJEB34643.

269 **RESULTS**270 **Revisiting the phylogenetic distribution of proposed molecular targets for Kp detection**

271 Fourteen molecular targets were found in the literature (Figure 1; Table 2) (22–28, 38). Four of
272 them were proposed to detect the Kp complex, while others were designed for specific members
273 of this complex (*K. pneumoniae*, *K. variicola* or *K. quasipneumoniae*; Table 2). Mapping of the
274 presence/absence of the sequence region expected to be amplified by the primers was performed
275 across *Klebsiella* phylogenetic diversity (Figure 1). Regarding the targets proposed for the entire
276 Kp complex, this *in-silico* analysis revealed that only *khe* and *tyrB* (25, 26) presented both a high
277 sensitivity and a high specificity. We further analysed *in silico* the primers target sites for these
278 two genes using primer-blast. The results showed that *khe* primers would be expected to amplify
279 the same region in *Raoultella* spp. (77 bp, with a sequence identity of the homologous region <
280 80%, hence not visible on Figure 1), as well as an additional region (348 bp) in these organisms.
281 Furthermore, *tyrB* primers also appear to be able to amplify the target region in *K. aerogenes* and
282 *Raoultella* spp., consistent with the distribution of the target region (Figure 1). Regarding the
283 targets that were proposed to be specific for Kp1, target KpI50233a (24) proved to be the most
284 specific and sensitive one (although with ability to also amplify *K. aerogenes* isolates), whereas
285 the ones proposed for Kp3 (23) appeared unspecific or to lack sensitivity in our *in silico* analysis
286 (**Figure 1**). Regarding the targeted chromosomal class A beta-lactamases genes *bla_{SHV}*, *bla_{OKP}*
287 and *bla_{LEN}* (28), there appeared to be a lack of specificity (Figure 1), which is explained by the
288 high degree of sequence identity between these *bla* genes, even though they represent distinct
289 targets. To clarify their distribution, we mapped the expected amplicon sequences of *bla_{SHV}*,
290 *bla_{OKP}* and *bla_{LEN}* using a higher threshold (92%, defined based on observed sequence similarity
291 within and between the three gene families) (Figure S1). Using this threshold, we observed a high
292 degree of specificity of the three families for their respective phylogroup/species, as expected

293 (39). However, it was evident that horizontal gene transfer events implicating the beta-lactamase
294 genes have occurred. In particular, the *bla_{SHV}* gene was often observed in non-Kp1 phylogroups
295 (particularly Kp2 and Kp4) and even in species outside the Kp complex, such as *E. coli* or
296 *Salmonella* spp. This can be attributed to the presence of *bla_{SHV}* on plasmids and was previously
297 described (21). The gene *bla_{LEN}* was also observed in a few Kp1 genomes. These observations
298 clearly render the use of the chromosomal beta-lactamase gene targets unreliable as
299 phylogroup/species identification markers (Figure S1).

300

301 **ZKIR primers design, PCR assay development and optimization**

302 The *tyrB* and *khe* genes were previously proposed as targets for the specific detection of Kp (25,
303 40). As shown above, *tyrB* and *khe* targets were not totally specific for the Kp complex. We
304 therefore attempted to define primers within the coding sequence of these genes but external to
305 the previously proposed target fragments. However, high identity was observed with non-Kp
306 complex species when blasting the entire coding sequence (data not shown). Consequently, Kp
307 complex-specific primers could not be designed within the coding sequence of these two genes.
308 Interestingly, investigation of sequences upstream of *khe* did reveal a sequence that was highly
309 conserved within the Kp complex. This region located in the intergenic region (IR) upstream of
310 *khe* is partly deleted in other species such as *K. oxytoca* and *Raoultella* spp. As this 249 bp non-
311 coding IR is located between *zur* (zinc uptake regulator) and *khe* (annotated as a putative
312 hemolysin) genes (Figure 2), it was named ZKIR for *zur-khe* intergenic region.

313 A pair of primers (ZKIR_F and ZKIR_R, Figure 2) targeting the ZKIR region was designed and
314 tested *in silico*. When implemented in the SYBR green PCR assay using reference strain ATCC
315 700603 (known as *K. pneumoniae*, but belonging in fact to *K. quasipneumoniae* subsp.
316 *similipneumoniae*), these primers successfully amplified a 78 bp sequence, with a melting

317 temperature of 80.3 °C. Sequencing of PCR products confirmed amplification of the target
318 sequence.
319 The sensitivity and specificity of the primers were experimentally tested on 2 ng of purified DNA
320 of representatives of Kp phylogroups Kp1 to Kp7 (Table 1) and non-Kp strains. The ZKIR_F and
321 ZKIR_R primers amplified the target sequence in all tested isolates of the Kp complex, with a
322 Threshold Cycle (Ct) value ranging from 13 to 26 and melting temperatures of 80.1 to 80.7 °C. In
323 contrast, when the ZKIR PCR was performed on 88 non-Kp isolates, no amplification was
324 observed, showing that the PCR did not yield false positives. Late, non-specific amplification
325 was recorded with few isolates in the last cycles of the reaction (after cycle 35) and melting
326 temperatures were clearly lower or higher than 80°C, indicating a non-specific amplification. All
327 assays performed on non-Kp samples can therefore be considered negative.

328

329 **Analytical sensitivity of the ZKIR PCR**

330 PCR reactions were performed with quantities of genomic DNA of *K. pneumoniae* ATCC13883^T
331 ranging from 7.5 ng (2.5×10^6 genomes) to 15 fg (5 genomes) (Figure 3 A and B). Linearity of
332 the assay was evaluated by plotting the Ct values against the \log_{10} calculated genome number
333 (calculated genome size is about 3.0 fg of DNA per cell, based on a 5.54 Mb *K. pneumoniae*
334 genome). Ct values were closely proportional to the logarithm of the genome number ($R^2=0.99$)
335 (Figure 4). The sensitivity of the assay was determined as 15 genomes (45 fg) per reaction mix.
336 No amplification was observed at the lower DNA concentration of 15 fg corresponding to 5
337 genomes.

338

339 **Analytical sensitivity of the ZKIR assay on soil samples**

340 In order to assess the performance of the ZKIR assay for detection of Kp directly from soil
341 samples, two soils (A and V) were spiked with bacterial concentrations ranging from 1.5×10^{-1}
342 cfu/g to 1.5×10^4 cfu/g. When soil samples were enriched in LB for 24 h and processed as
343 described above, Kp was detected in all spiked microcosms except in two out of the 3
344 microcosms of soil A inoculated with the lowest Kp concentration. When the soil/LB suspension
345 was tested prior to incubation, Kp was not detected in any of the spiked microcosms of soil V,
346 whereas in soil A, Kp could only be detected at the highest concentration (1.5×10^4 cfu/g).
347 Finally, when the ZKIR assay was performed using purified metagenomic DNA from soil,
348 positive results were only observed in microcosms spiked with 1.5×10^4 and 1.5×10^3 cfu/g in
349 both soils, whereas no positive signal was observed at lower concentrations. The enrichment step
350 thus appeared critical to reach high sensitivity.

351

352 **Comparison of the ZKIR real-time PCR and culture-based methods for the detection of Kp**
353 **in environmental samples**

354 After enrichment and ZKIR real-time PCR, Kp was detected in 41 out of 96 (42.7 %) assayed
355 environmental samples, when the 1:10 dilution was used as template DNA (Table 3). When the
356 1:100 dilution was used, Kp was detected in a lower number of positive samples (38/96). The Ct
357 values were in the range 18.4 - 36.2. The 96 samples were processed in parallel with the culture-
358 based method. Kp was not detected in any of the ZKIR-negative samples: when presumptive
359 colonies were detected, they were always identified by MALDI-TOF MS as non-Kp, and
360 belonged to closely related species such as *K. oxytoca*, *Raoultella* spp. and *Serratia* spp. In
361 contrast, Kp was isolated in 37 out of the 41 ZKIR positive samples. These isolates were all
362 identified as either *K. pneumoniae* or *K. variicola* by MALDI-TOF MS.

363 Genomic characterization of 31 of these isolates (1 was contaminated and 5 were not yet
364 available) revealed a dominance of Kp1 (n= 20, 65%), followed by Kp3 (n=10, 32%) and Kp4
365 (n=1, 3%; Table S1). Population diversity analysis based on MLST (41) and cgMLST (24)
366 revealed a high genotypic diversity, with 23 STs and 25 cgMLST types. In five cases, the strain
367 detected in the soil was the same as the one present in the leaves and/or roots (e.g., SB6439 and
368 SB6440; Table S1), showing colonization of several plant sites by the same strain. Only 2 isolates
369 belonging to STs commonly found in the clinical settings were detected (ST37 and ST76).
370 Interestingly, from the predicted O-types, the O3-type represented 50% of Kp population, which
371 contrasts with the nosocomial situation, where types O1 and O2 are dominant (2, 42), but not
372 with human carriage where the O3-type is also dominant (O3-31%, O1-19% and O2-17%; our
373 unpublished results). Also contrasting with the clinical epidemiology of Kp, a low level of
374 antibiotic resistance and virulence genes was observed, with 93.5% of the strains presenting an
375 ancestral 'wild-type' susceptibility genotype (Table S1). The number of strains harboring
376 plasmids detected in these environmental samples was also low (n=9, 29%), as well as the
377 number of plasmid-encoded heavy metal tolerance genes (mainly the silver and copper tolerance
378 clusters). These results contrast with clinical and animal isolates, where plasmids and metal
379 tolerance clusters are common (42, Rodrigues, unpublished results). As expected (1, 37), all Kp3
380 isolates harbored the *nif* cluster responsible for nitrogen fixation. Interestingly, the *nif* cluster was
381 also present in one Kp1 isolate from soil (SB6181). The phylogenetic analysis (Figure S2) of the
382 *nif* cluster from our environmental isolates compared to a panel of reference strains (37) revealed
383 that strain SB6181 (Kp1) branched within *K. variicola* strains (Kp3), showing that the *nif* cluster
384 in this Kp1 strain was acquired via horizontal gene transfer from a *K. variicola* donor. Kp3 was
385 also the inferred donor of the *nif* gene cluster for Kp5 and Kp6 *nif*-positive strains (Figure S2).

386 **Discussion**

387 Routes of transmission of ecologically generalist human pathogens are usually complex and
388 poorly understood. Proper risk management requires a holistic approach which has been theorised
389 as the One Health concept (44). Despite the fact that the number of human infections caused by
390 members of the Kp complex are on the rise and are increasingly resistant to antimicrobial
391 treatment (1, 45), the ecology of Kp remains poorly understood. Identification of the various
392 habitats in which Kp thrives, and the routes of transmission to humans, for example through
393 specific types of food, is critical in order to limit exposure. In this prospect, large-scale sampling
394 is needed to define the sources of Kp contamination and such surveys will require sensitive,
395 reliable and cost-efficient detection methods.

396 Several molecular assays for the detection and/or identification of *Klebsiella* from clinical or food
397 and environmental samples have been previously proposed. These methods allow detecting
398 mainly *K. pneumoniae (sensu stricto)* and *K. variicola* (Figure 1). However, the Kp complex
399 currently encompasses 7 taxa. Our *in-silico* analyses showed that some previously described PCR
400 assays could be useful for the identification of phylogenetic subsets of the Kp complex
401 (Kp150233a for Kp1, *bla*_{OKP} for Kp2/Kp4 and *bla*_{LEN} for Kp3/Kp5).

402

403 Given that all members of the Kp complex can cause infections in humans or animals, developing
404 a novel method with the ability to detect the Kp complex by targeting exhaustively all currently
405 known Kp phylogroups would be an important advance. Although several previous targets were
406 designed for the entire Kp complex, they predate recent taxonomic advances and have therefore
407 not been validated on the entire phylogenetic breadth of this bacterial group. Here, we found by
408 *in-silico* approaches that *khe* and *tyrB* assays lack specificity, which may negatively affect Kp

409 detection efforts especially when testing microbiologically complex samples from the
410 environment, such as soil.
411 We therefore aimed to develop a novel real-time PCR assay, and used an intergenic region
412 located adjacent to the previously proposed target gene *khe*. Using well-defined reference strains
413 representative of current taxonomy (20, 32, 33), we show that the novel ZKIR PCR real-time
414 assay allows the accurate detection of all members of the Kp complex. We found complete
415 specificity and sensitivity (*i.e.*, phylogenetic coverage) of this assay based on our reference
416 strains panel. To improve analytical sensitivity, a 24 h enrichment culture followed by an easy,
417 fast and cost-effective sample processing was implemented, upstream of molecular detection
418 using the ZKIR assay. This was necessary for complex matrices such as soil or sewage, where
419 microbial diversity and abundance are high, in which case direct detection of one particular group
420 of organisms, which might be present only at low abundance, is challenging. This procedure
421 turned out to be sensitive enough to detect 1 single Kp bacterium in 5 g of soil. The ZKIR assay
422 also appeared slightly more sensitive than the SCAI culture-based method, which is based on the
423 ability of *Klebsiella* strains to utilize citrate and inositol, itself previously shown to be highly
424 sensitive and to recover most Kp members (36, 46). Therefore, this fast and easy novel molecular
425 method represents a powerful approach for screening large numbers of samples. This will spare
426 the time-consuming handling of numerous presumptive colonies necessary for confirmation of
427 their identification, given that *K. oxytoca*, *Raoultella*, *Serratia* and *Enterobacter* are able to form
428 colonies on SCAI agar, with morphological characteristics similar to Kp (36, 47). As such, the
429 ZKIR protocol was significantly faster than culture, as results were available on average 26 h
430 after sampling (24 h enrichment, sample treatment, PCR) while up to 96 h were necessary when
431 using the culture-based method (24 h enrichment, plate incubation, colony purification, MALDI-
432 TOF identification).

433 Interestingly, the implementation of the ZKIR PCR real-time assay evidenced a high (43%)
434 detection rate of Kp from environmental samples, which represent niches that are still
435 underexplored for Kp presence and biological characteristics. The high detection rate was largely
436 confirmed by culture, suggesting a low rate of false positive qPCR results. This novel and
437 original sampling strategy allowed us to explore the genomic features of environmental Kp
438 populations. A strong contrast with Kp isolates typically recovered in the clinical setting was
439 observed. First, a high genetic diversity was observed, with no predominant sublineage. This
440 situation contrasts with MDR or hypervirulent Kp populations, from which frequent sublineages
441 (so-called high-risk clones) are recovered. Second, environmental Kp isolates were almost devoid
442 of antibiotic resistance and virulence genes, in conspicuous contrast with clinical samples (48).
443 Finally, the genomic characteristics of environmental Kp isolates revealed interesting biological
444 features, such as a frequent O3 O-antigen type and the horizontal transfer of nitrogen fixation
445 gene cluster into Kp1, the main phylogroup associated with human infections. These data call for
446 further studies into the biology of soil Kp isolates, which may reveal interesting novel adaptive
447 strategies of this important generalist pathogen. Finally, our findings suggest that environmental
448 Kp populations differ from clinical Kp populations, which implies indirect and possibly complex
449 epidemiological links between environmental and clinical Kp. The ZKIR PCR real-time assay
450 developed herein is expected to enable future large-scale studies into this important question.

451

452 In conclusion, the ZKIR assay is a new tool for Kp detection that is highly specific, sensitive,
453 reliable and cost-effective. To accelerate uptake of this method, the corresponding protocol was
454 released publicly on protocols.io ([dx.doi.org/10.17504/protocols.io.7n6hmhe](https://doi.org/10.17504/protocols.io.7n6hmhe)). This simple
455 method can easily be implemented in laboratories equipped with real-time PCR thermocyclers
456 (MedVetKlebs consortium, unpublished results). Using the ZKIR method after a short culture

457 enrichment step greatly enhances sensitivity. As this rapid screen of samples allows one to focus
458 only on ZKIR positive samples for more labour-intensive downstream microbiological isolation
459 and characterization, it is our hope that it will contribute to advance knowledge on the biology of
460 environmental Kp and on the reservoirs and transmission routes of this increasingly important
461 group of pathogens.

462 **SUPPLEMENTAL MATERIAL**

463 **SUPPLEMENTAL FILE:** 2 PDF files, 1 Excel file

464

465

466 **ACKNOWLEDGEMENTS**

467 We thank Alexis Criscuolo for access to an early version of the JolyTree software tool, Julien

468 Guglielmini for providing us access to in-house scripts for mapping the target genes, and Juan

469 Sebastian Lopez Fernandes for assistance with genomic analyses.

470 This work is part of the MedVetKlebs project, a component of the One Health European Joint

471 Programme, and has thereby received funding from the European Union's Horizon 2020 research

472 and innovation programme under Grant Agreement No 773830.

473 **REFERENCES**

- 474 1. Holt KE, Wertheim H, Zadoks RN, Baker S, Whitehouse CA, Dance D, Jenney A, Connor TR, Hsu
475 LY, Severin J, Brisse S, Cao H, Wilksch J, Gorrie C, Schultz MB, Edwards DJ, Nguyen KV,
476 Nguyen TV, Dao TT, Mensink M, Minh VL, Nhu NTK, Schultz C, Kuntaman K, Newton PN,
477 Moore CE, Strugnell RA, Thomson NR. 2015. Genomic analysis of diversity, population structure,
478 virulence, and antimicrobial resistance in *Klebsiella pneumoniae*, an urgent threat to public health.
479 Proc Natl Acad Sci 112:E3574–E3581.
- 480 2. David S, Reuter S, Harris SR, Glasner C, Feltwell T, Argimon S, Abudahab K, Goater R, Giani T,
481 Errico G, Aspbury M, Sjunnebo S, Koraqi A, Lacey D, Apfalter P, Hartl R, Glupczynski Y, Huang
482 T-D, Strateva T, Marteva-Proevska Y, Andrasevic AT, Butic I, Pieridou-Bagatzouni D, Maikanti-
483 Charalampous P, Hrabak J, Zemlickova H, Hammerum A, Jakobsen L, Ivanova M, Pavelkovich A,
484 Jalava J, Österblad M, Dortet L, Vaux S, Kaase M, Gatermann SG, Vatopoulos A, Tryfinopoulou K,
485 Tóth Á, Jánvári L, Boo TW, McGrath E, Carmeli Y, Adler A, Pantosti A, Monaco M, Raka L, Kurti
486 A, Balode A, Saule M, Miciuleviciene J, Mierauskaite A, Perrin-Weniger M, Reichert P, Nestorova
487 N, Debattista S, Mijovic G, Lopicic M, Samuelsen Ø, Haldorsen B, Zabicka D, Literacka E, Caniça
488 M, Manageiro V, Kaftandzieva A, Trajkovska-Dokic E, Damian M, Lixandru B, Jelesic Z, Trudic A,
489 Niks M, Schreterova E, Pirs M, Cerar T, Oteo J, Aracil B, Giske C, Sjöström K, Gür D, Cakar A,
490 Woodford N, Hopkins K, Wiuff C, Brown DJ, Feil EJ, Rossolini GM, Aanensen DM, Grundmann
491 H, the EuSCAPE Working Group, the ESGEM Study Group. 2019. Epidemic of carbapenem-
492 resistant *Klebsiella pneumoniae* in Europe is driven by nosocomial spread. Nat Microbiol 4:1919–
493 1929.
- 494 3. Ko W-C. 2002. Community-acquired *Klebsiella pneumoniae* bacteremia: global differences in
495 clinical patterns. Emerg Infect Dis 8:160–166.

- 496 4. Zhang Y, Zeng J, Liu W, Zhao F, Hu Z, Zhao C, Wang Q, Wang X, Chen H, Li H, Zhang F, Li S,
497 Cao B, Wang H. 2015. Emergence of a hypervirulent carbapenem-resistant *Klebsiella pneumoniae*
498 isolate from clinical infections in China. *J Infect* 71:553–560.
- 499 5. Gorrie CL, Mirčeta M, Wick RR, Edwards DJ, Thomson NR, Strugnell RA, Pratt NF, Garlick JS,
500 Watson KM, Pilcher DV, McGloughlin SA, Spelman DW, Jenney AWJ, Holt KE. 2017.
501 Gastrointestinal carriage is a major reservoir of *Klebsiella pneumoniae* infection in intensive care
502 patients. *Clin Infect Dis* 65:208–215.
- 503 6. Brisse S, Grimont F, Grimont PAD. 2006. The Genus *Klebsiella*, p. 159–196. In Dworkin, M,
504 Falkow, S, Rosenberg, E, Schleifer, K-H, Stackebrandt, E (eds.), *The Prokaryotes*. Springer New
505 York.
- 506 7. Munoz MA, Ahlström C, Rauch BJ, Zadoks RN. 2006. Fecal shedding of *Klebsiella pneumoniae* by
507 dairy cows. *J Dairy Sci* 89:3425–3430.
- 508 8. Rosenblueth M, Martínez L, Silva J, Martínez-Romero E. 2004. *Klebsiella variicola*, a novel species
509 with clinical and plant-associated isolates. *Syst Appl Microbiol* 27:27–35.
- 510 9. Lee D-Y, Shannon K, Beaudette LA. 2006. Detection of bacterial pathogens in municipal
511 wastewater using an oligonucleotide microarray and real-time quantitative PCR. *J Microbiol*
512 *Methods* 65:453–467.
- 513 10. Benami M, Gross A, Herzberg M, Orlofsky E, Vonshak A, Gillor O. 2013. Assessment of
514 pathogenic bacteria in treated graywater and irrigated soils. *Sci Total Environ* 458–460:298–302.
- 515 11. Barati A, Ghaderpour A, Chew L, Bong C, Thong K, Chong V, Chai L. 2016. Isolation and
516 characterization of aquatic-borne *Klebsiella pneumoniae* from tropical estuaries in Malaysia. *Int J*
517 *Environ Res Public Health* 13:426.

- 518 12. Falomir MP, Gozalbo D, Rico H. 2010. Coliform bacteria in fresh vegetables: from cultivated lands
519 to consumers, volume 2. In A. Mendez-Vilas, Current Research, Technology and Education Topics
520 in Applied Microbiology and Microbial Biotechnology.
- 521 13. Podschun R, Pietsch S, Holler C, Ullmann U. 2001. Incidence of *Klebsiella* species in surface waters
522 and their expression of virulence factors. Appl Environ Microbiol 67:3325–3327.
- 523 14. Davis GS, Waits K, Nordstrom L, Weaver B, Aziz M, Gauld L, Grande H, Bigler R, Horwinski J,
524 Porter S, Stegger M, Johnson JR, Liu CM, Price LB. 2015. Intermingled *Klebsiella pneumoniae*
525 populations between retail meats and human urinary tract infections. Clin Infect Dis 61:892–899.
- 526 15. Zadoks RN, Griffiths HM, Munoz MA, Ahlstrom C, Bennett GJ, Thomas E, Schukken YH. 2011.
527 Sources of *Klebsiella* and *Raoultella* species on dairy farms: Be careful where you walk. J Dairy Sci
528 94:1045–1051.
- 529 16. Runcharoen C, Moradigaravand D, Blane B, Paksanont S, Thammachote J, Anun S, Parkhill J,
530 Chantratita N, Peacock SJ. 2017. Whole genome sequencing reveals high-resolution epidemiological
531 links between clinical and environmental *Klebsiella pneumoniae*. Genome Med 9:6.
- 532 17. Gregg S, Davis, Lance B, Price. 2016. Recent research examining links among *Klebsiella*
533 *pneumoniae* from food, food animals, and human extraintestinal infections. Curr Envir Health Rpt
534 3:128–135.
- 535 18. Brisse S, Passet V, Grimont PAD. 2014. Description of *Klebsiella quasipneumoniae* sp. nov.,
536 isolated from human infections, with two subspecies, *Klebsiella quasipneumoniae* subsp.
537 *quasipneumoniae* subsp. nov. and *Klebsiella quasipneumoniae* subsp. *similipneumoniae* subsp. nov.,
538 and demonstration that *Klebsiella singaporensis* is a junior heterotypic synonym of *Klebsiella*
539 *variicola*. Int J Syst Evol Microbiol 64:3146–3152.

- 540 19. Long SW, Linson SE, Ojeda Saavedra M, Cantu C, Davis JJ, Brettin T, Olsen RJ. 2017. Whole-
541 genome sequencing of a human clinical isolate of the novel species *Klebsiella quasivariicola* sp.
542 nov. *Genome Announc* 5:e01057-17.
- 543 20. Rodrigues C, Passet V, Rakotondrasoa A, Diallo TA, Criscuolo A, Brisse S. 2019. Description of
544 *Klebsiella africanensis* sp. nov., *Klebsiella variicola* subsp. *tropicalensis* subsp. nov. and
545 *Klebsiella variicola* subsp. *variicola* subsp. nov. *Res Microbiol* 170:165-170.
- 546 21. Long SW, Linson SE, Ojeda Saavedra M, Cantu C, Davis JJ, Brettin T, Olsen RJ. 2017. Whole-
547 Genome Sequencing of Human Clinical *Klebsiella pneumoniae* Isolates Reveals Misidentification
548 and Misunderstandings of *Klebsiella pneumoniae* , *Klebsiella variicola* , and *Klebsiella*
549 *quasipneumoniae*. *mSphere* 2:e00290-17.
- 550 22. Liu Y, Liu C, Zheng W, Zhang X, Yu J, Gao Q, Hou Y, Huang X. 2008. PCR detection of
551 *Klebsiella pneumoniae* in infant formula based on 16S–23S internal transcribed spacer. *Int J Food*
552 *Microbiol* 125:230–235.
- 553 23. Garza-Ramos U, Silva-Sánchez J, Martínez-Romero E, Tinoco P, Pina-Gonzales M, Barrios H,
554 Martínez-Barnette J, Gómez-Barreto RE, Tellez-Sosa J. 2015. Development of a Multiplex-PCR
555 probe system for the proper identification of *Klebsiella variicola*. *BMC Microbiol* 15:64.
- 556 24. Bialek-Davenet S, Criscuolo A, Ailloud F, Passet V, Nicolas-Chanoine M-H, Decre D, Brisse S.
557 2014. Development of a multiplex PCR assay for identification of *Klebsiella pneumoniae*
558 hypervirulent clones of capsular serotype K2. *J Med Microbiol* 63:1608–1614.
- 559 25. Yin-Ching C, Jer-Horng S, Ching-Nan L, Ming-Chung C. 2002. Cloning of a gene encoding a
560 unique haemolysin from *Klebsiella pneumoniae* and its potential use as a species-specific gene
561 probe. *Microb Pathog* 33:1–6.

- 562 26. Jeong E-S, Lee K-S, Heo S-H, Seo J-H, Choi Y-K. 2013. Rapid Identification of *Klebsiella*
563 *pneumoniae*, *Corynebacterium kutscheri*, and *Streptococcus pneumoniae* using triplex Polymerase
564 Chain Reaction in rodents. *Exp Anim* 62:35–40.
- 565 27. Hartman LJ, Selby EB, Whitehouse CA, Coyne SR, Jaissle JG, Twenhafel NA, Burke RL, Kulesh
566 DA. 2009. Rapid real-time PCR assays for detection of *Klebsiella pneumoniae* with the *rmpA* or
567 *magA* genes associated with the hypermucoviscosity phenotype. *J Mol Diagn* 11:464–471.
- 568 28. Fonseca EL, Ramos N da V, Andrade BGN, Morais LLCS, Marin MFA, Vicente ACP. 2017. A one-
569 step multiplex PCR to identify *Klebsiella pneumoniae* , *Klebsiella variicola*, and *Klebsiella*
570 *quasipneumoniae* in the clinical routine. *Diagn Microbiol Infect Dis* 87:315–317.
- 571 29. Singh K, Mangold KA, Wyant K, Schora DM, Voss B, Kaul KL, Hayden MK, Chundi V, Peterson
572 LR. 2012. Rectal screening for *Klebsiella pneumoniae* carbapenemases: comparison of Real-Time
573 PCR and culture using two selective screening agar plates. *J Clin Microbiol* 50:2596–2600.
- 574 30. Bilodeau G. 2011. Quantitative polymerase chain reaction for the detection of organisms in soil.
575 *CAB Rev Perspect Agric Vet Sci Nutr Nat Resour* 6.
- 576 31. Plassart P, Terrat S, Thomson B, Griffiths R, Dequiedt S, Lelievre M, Regnier T, Nowak V, Bailey
577 M, Lemanceau P, Bispo A, Chabbi A, Maron P-A, Mougel C, Ranjard L. 2012. Evaluation of the
578 ISO Standard 11063 DNA extraction procedure for assessing soil microbial abundance and
579 community structure. *PLoS ONE* 7:e44279.
- 580 32. Rodrigues C, Passet V, Rakotondrasoa A, Brisse S. 2018. Identification of *Klebsiella pneumoniae*,
581 *Klebsiella quasipneumoniae*, *Klebsiella variicola* and Related Phylogroups by MALDI-TOF Mass
582 Spectrometry. *Front Microbiol* 9:3000.

- 583 33. Passet V, Brisse S. 2018. Description of *Klebsiella grimontii* sp. nov. Int J Syst Evol Microbiol
584 68:377–381.
- 585 34. Criscuolo A. 2019. A fast alignment-free bioinformatics procedure to infer accurate distance-based
586 phylogenetic trees from genome assemblies. Res Ideas Outcomes 5:e36178.
- 587 35. López-Gutiérrez et al. - 2004 - Quantification of a novel group of nitrate-reducing bacteria in the
588 environment by real-time PCR. J. Microbiol. Methods 57:399-407.
- 589 36. Van Kregten E, Westerdaal NAC, Willers JMN. 1984. New, simple medium for selective recovery
590 of *Klebsiella pneumoniae* and *Klebsiella oxytoca* from human feces. J Clin Microbiol 20:6.
- 591 37. Blin C, Passet V, Touchon M, Rocha EPC, Brisse S. 2017. Metabolic diversity of the emerging
592 pathogenic lineages of *Klebsiella pneumoniae*: Metabolic diversity of *Klebsiella pneumoniae*.
593 Environ Microbiol 19:1881–1898.
- 594 38. Tian Y, Wang L, Zhang J, Han Q, Xia X, Song Y, Yang G. 2019. CelB is a suitable marker for rapid
595 and specific identification of *Klebsiella pneumoniae* by the loop-mediated isothermal amplification
596 (LAMP) assay. Braz J Microbiol 50:961–967.
- 597 39. Haeggman S, Lofdahl S, Paauw A, Verhoef J, Brisse S. 2004. Diversity and Evolution of the Class
598 A Chromosomal Beta-Lactamase Gene in *Klebsiella pneumoniae*. Antimicrob Agents Chemother
599 48:2400–2408.
- 600 40. Jeong E-S, Lee K-S, Heo S-H, Seo J-H, Choi Y-K. 2013. Rapid Identification of *Klebsiella*
601 *pneumoniae*, *Corynebacterium kutscheri*, and *Streptococcus pneumoniae* Using Triplex Polymerase
602 Chain Reaction in Rodents. Exp Anim 62:35–40.
- 603 41. Diancourt L, Passet V, Verhoef J, Grimont PAD, Brisse S. 2005. Multilocus Sequence Typing of
604 *Klebsiella pneumoniae* Nosocomial Isolates. J Clin Microbiol 43:4178.

- 605 42. Follador R, Heinz E, Wyres KL, Ellington MJ, Kowarik M, Holt KE, Thomson NR. 2016. The
606 diversity of *Klebsiella pneumoniae* surface polysaccharides. *Microb Genomics* 2.
- 607 43. Sütterlin S, Dahlö M, Tellgren-Roth C, Schaal W, Melhus Å. 2017. High frequency of silver
608 resistance genes in invasive isolates of *Enterobacter* and *Klebsiella* species. *J Hosp Infect* 96:256–
609 261.
- 610 44. King LJ, Anderson LR, Blackmore CG, Blackwell MJ, Lautner EA, Marcus LC, Meyer TE, Monath
611 TP, Nave JE, Ohle J, Pappaioanou M, Sobota J, Stokes WS, Davis RM, Glasser JH, Mahr RK. 2008.
612 Executive summary of the AVMA One Health Initiative Task Force report. *J Am Vet Med Assoc*
613 233:259–261.
- 614 45. Nordmann P, Naas T, Poirel L. 2011. Global spread of carbapenemase-producing
615 *Enterobacteriaceae*. *Emerg Infect Dis* 17:1791–1798.
- 616 46. Passet V, Brisse S. 2015. Association of Tellurite Resistance with Hypervirulent Clonal Groups of
617 *Klebsiella pneumoniae*. *J Clin Microbiol* 53:1380–1382.
- 618 47. Ohtomo R, Saito M. 2003. A New selective medium for detection of *Klebsiella* from dairy
619 environments. *Microbes Environ* 18:138–144.
- 620 48. Wyres KL, Holt KE. 2016. *Klebsiella pneumoniae* Population Genomics and Antimicrobial-
621 Resistant Clones. *Trends Microbiol* 24:944–956.

622

623

624

625 **TABLES**626 **TABLE 1** Bacterial strains tested to develop the ZKIR PCR assay.

627 **TABLE 2** Molecular target sequences previously proposed for *Klebsiella pneumoniae*

628 identification.

629 **TABLE 3** Comparison between ZKIR PCR and culture results in samples collected in Auxonne,

630 France, between July and September 2018.

631

632 **FIGURES**

633 **FIG 1** Phylogenetic distribution of the molecular targets for *K. pneumoniae* detection described

634 in the literature. The ZKIR target sequence corresponds to target 15; other targets are given in

635 Table 2. The inner circle colored sectors correspond to *K. pneumoniae* phylogroups or other

636 *Klebsiella* species (see color key). Molecular targets were detected in the corresponding genomes

637 using BLASTN with 80% nucleotide identity and 80% length coverage.

638

639 **FIG 2** Genetic context of the ZKIR region on the genome of strain *K. pneumoniae* ATCC 13883^T

640 (GenBank accession number GCA_000742135.1) and detailed location of ZKIR primers and

641 amplicon within the 249-base pair (bp) region that is specific for the *K. pneumoniae* species

642 complex (boxed area).

643

644 **FIG 3** Amplification curves (A) and melt curve peaks (B) established using real-time PCR

645 targeting the ZKIR region with serial dilutions of *K. pneumoniae* ATCC13883^T DNA. Triplicate

646 of DNA concentrations of 7.5 ng, 750 pg, 75 pg, 7.5 pg, 750 fg are presented, but lower dilutions

647 are not.

648

649 **FIG 4** Standard curve established using real-time ZKIR PCR with serial dilutions of

650 *K. pneumoniae* ATCC13883^T DNA from 7.5 ng to 45 fg.

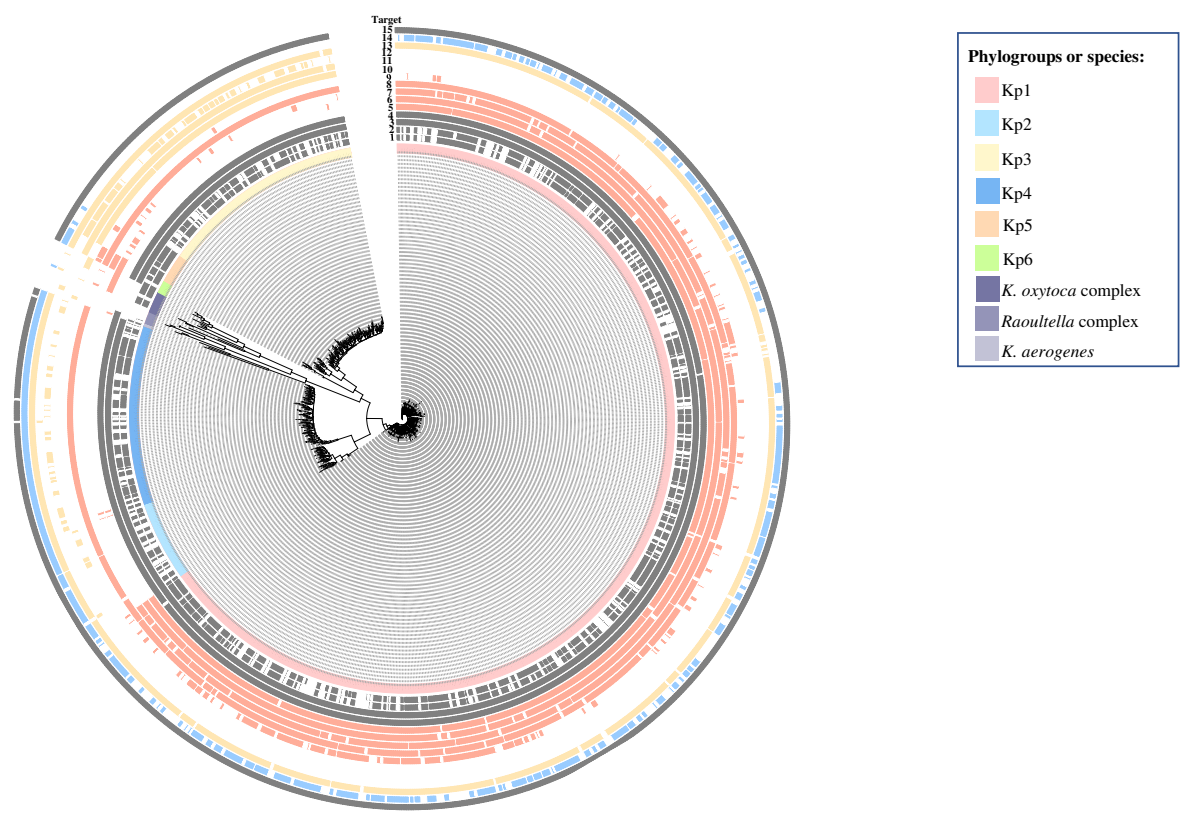


Figure 1. Phylogenetic distribution of the molecular targets for *K. pneumoniae* detection described in the literature. The ZKIR target sequence corresponds to target 15; other targets are given in Table 2. The inner circle colored sectors correspond to *K. pneumoniae* phylogroups or other *Klebsiella* species (see color key). Molecular targets were detected in the corresponding genomes using BLASTN with 80% nucleotide identity and 80% length coverage.

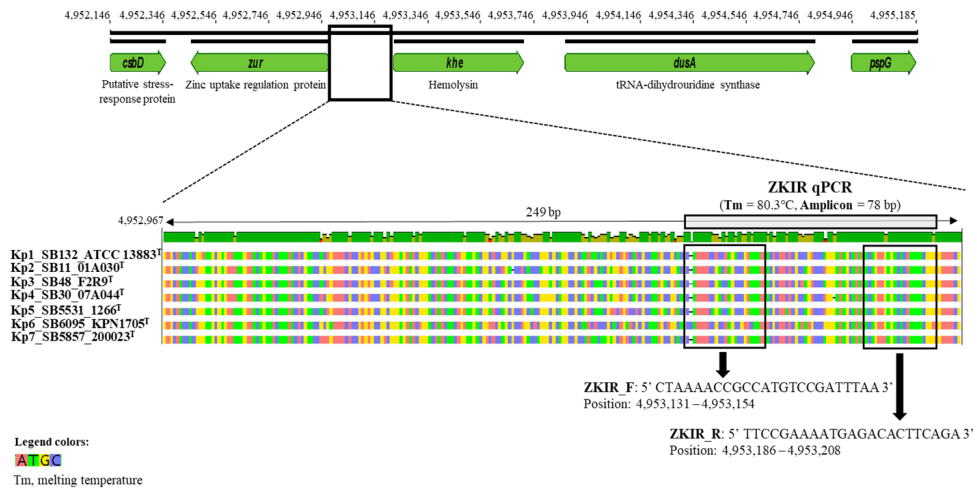


Figure 2 Genetic context of the ZKIR region on the genome of strain *K. pneumoniae* ATCC 13883^T (GenBank accession number GCA_000742135.1) and detailed location of ZKIR primers and amplicon within the 249-base pair (bp) region that is specific for the *K. pneumoniae* species complex (boxed area).

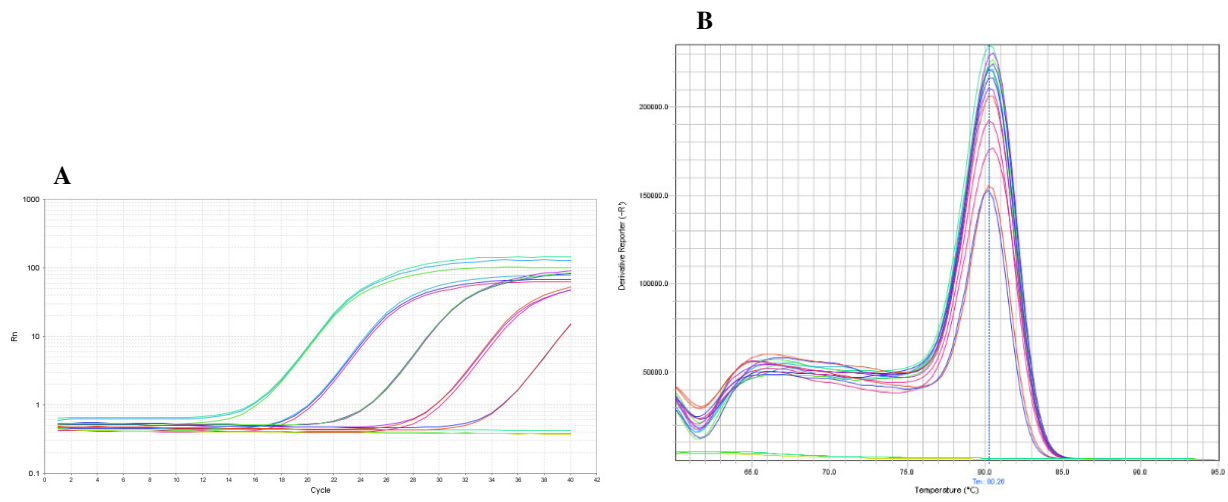


Figure 3 Amplification curves (A) and melt curve peaks (B) established using real-time PCR targeting the ZKIR region with serial dilutions of *K. pneumoniae* ATCC13883^T DNA. Triplicates of DNA concentrations of 7.5 ng, 750 pg, 75 pg, 7.5 pg and 750 fg are presented, whereas lower dilutions are not.

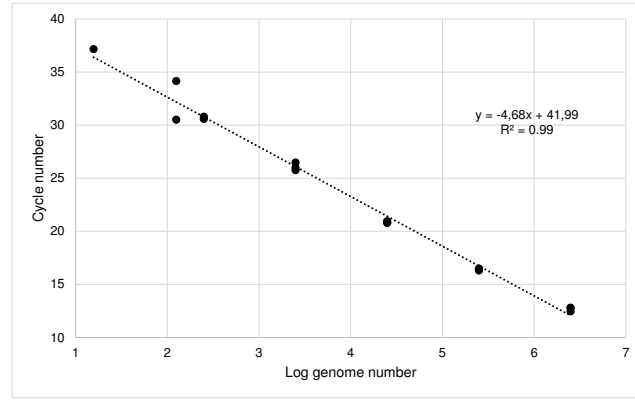


Figure 4 Standard curve established using real-time ZKIR PCR with serial dilutions of *K. pneumoniae* ATCC13883^T DNA from 7.5 ng to 45 fg.

TABLE 1 Bacterial strains tested to develop the ZKIR PCR assay.

Organism name (Phylogroup)	Strain name	Strain bank ID*	Country	Isolation year
<i>Klebsiella pneumoniae</i> (Kp1)	SB4-2	SB1067	Netherlands	2002
<i>K. pneumoniae</i> (Kp1)	ATCC 13883 ^T	SB132	n.a.	n.a.
<i>K. pneumoniae</i> (Kp1)	MGH 78578	SB107	n.a.	1994
<i>K. pneumoniae</i> (Kp1)	none	SB1139	Netherlands	2002
<i>K. pneumoniae</i> (Kp1)	5-2	SB617	Netherlands	2000
<i>K. pneumoniae</i> (Kp1)	04A025	SB20	France	1997
<i>K. pneumoniae</i> (Kp1)	2-3	SB612	Netherlands	2000
<i>K. pneumoniae</i> (Kp1)	BJ1-GA	SB4496	France	2011
<i>K. pneumoniae</i> (Kp1)	n.a.	MIAE07651	France	2015
<i>K. quasipneumoniae</i> subsp. <i>quasipneumoniae</i> (Kp2)	01A030 ^T	SB11	Austria	1997
<i>K. quasipneumoniae</i> subsp. <i>quasipneumoniae</i> (Kp2)	none	SB1124	Netherlands	2002
<i>K. quasipneumoniae</i> subsp. <i>quasipneumoniae</i> (Kp2)	U41	SB2110	Germany	1990
<i>K. quasipneumoniae</i> subsp. <i>quasipneumoniae</i> (Kp2)	10A442	SB224	Italy	1998
<i>K. quasipneumoniae</i> subsp. <i>quasipneumoniae</i> (Kp2)	99-1002	SB2478	Netherlands	1999
<i>K. quasipneumoniae</i> subsp. <i>quasipneumoniae</i> (Kp2)	18A451	SB255	Spain	1998
<i>K. quasipneumoniae</i> subsp. <i>quasipneumoniae</i> (Kp2)	11128	SB3445	n.a.	n.a.
<i>K. quasipneumoniae</i> subsp. <i>quasipneumoniae</i> (Kp2)	18A069	SB59	Spain	1997
<i>K. quasipneumoniae</i> subsp. <i>quasipneumoniae</i> (Kp2)	Kleb Ali 0320584	SB98	n.a.	n.a.
<i>K. variicola</i> subsp. <i>variicola</i> (Kp3)	01A065	SB1	Austria	1997
<i>K. variicola</i> subsp. <i>variicola</i> (Kp3)	07A058	SB31	Germany	1997
<i>K. variicola</i> subsp. <i>variicola</i> (Kp3)	IPEUC-1516	SB3278	France	1988
<i>K. variicola</i> subsp. <i>variicola</i> (Kp3)	CIP 53.24	SB3295	n.a.	n.a.
<i>K. variicola</i> subsp. <i>variicola</i> (Kp3)	Ørskov 1756/51	SB3301	n.a.	n.a.
<i>K. variicola</i> subsp. <i>variicola</i> (Kp3)	F2R9 ^T	SB48	Mexico	n.a.
<i>K. variicola</i> subsp. <i>variicola</i> (Kp3)	6115	SB489	n.a.	n.a.
<i>K. variicola</i> subsp. <i>variicola</i> (Kp3)	Ørskov 4425/51	SB497	n.a.	n.a.
<i>K. variicola</i> subsp. <i>variicola</i> (Kp3)	Kp342	SB579	USA	n.a.
<i>K. quasipneumoniae</i> subsp. <i>similipneumoniae</i> (Kp4)	09A323	SB164	Greece	1997
<i>K. quasipneumoniae</i> subsp. <i>similipneumoniae</i> (Kp4)	12A476	SB203	Netherlands	1998
<i>K. quasipneumoniae</i> subsp. <i>similipneumoniae</i> (Kp4)	07A044 ^T	SB30	Germany	1997
<i>K. quasipneumoniae</i> subsp. <i>similipneumoniae</i> (Kp4)	325	SB3233	France	1975
<i>K. quasipneumoniae</i> subsp. <i>similipneumoniae</i> (Kp4)	Ørskov 1303/50	SB3297	Turkey	n.a.
<i>K. quasipneumoniae</i> subsp. <i>similipneumoniae</i> (Kp4)	Ørskov 4463/52	SB500	n.a.	n.a.
<i>K. quasipneumoniae</i> subsp. <i>similipneumoniae</i> (Kp4)	CIP 110288	SB4697	China	2010
<i>K. quasipneumoniae</i> subsp. <i>similipneumoniae</i> (Kp4)	1-1	SB610	Netherlands	2000
<i>K. variicola</i> subsp. <i>tropica</i> (Kp5)	Gal12	SB824	Mexico	n.a.
<i>K. variicola</i> subsp. <i>tropica</i> (Kp5)	CDC 4241-71	SB94	n.a.	n.a.
<i>K. variicola</i> subsp. <i>tropica</i> (Kp5)	885	SB5439	Madagascar	2016
<i>K. variicola</i> subsp. <i>tropica</i> (Kp5)	1266 ^T	SB5531	Madagascar	2016
<i>K. variicola</i> subsp. <i>tropica</i> (Kp5)	1283	SB5544	Madagascar	2016
<i>K. variicola</i> subsp. <i>tropica</i> (Kp5)	1375	SB5610	Madagascar	2016
<i>K. variicola</i> subsp. <i>tropica</i> (Kp5)	814	SB5387	Madagascar	2015
' <i>K. quasivariicola</i> ' (Kp6)	08A119	SB33	Germany	1997
' <i>K. quasivariicola</i> ' (Kp6)	10982	SB6071	USA	2005
' <i>K. quasivariicola</i> ' (Kp6)	01-467-2ECBU	SB6094	Madagascar	2015
' <i>K. quasivariicola</i> ' (Kp6)	01-310A	SB6095	Madagascar	2013

' <i>K. quasivariicola</i> ' (Kp6)	KPN1705 ^T	SB6096	USA	2014
<i>K. africana</i> (Kp7)	200023 ^T	SB5857	Senegal	2016
<i>K. michiganensis</i> (Ko1)	CIP 110787 ^T	SB4934	USA	2010
<i>K. michiganensis</i> (Ko1)	05A071	SB71	France	1997
<i>K. michiganensis</i> (Ko1)	09A029	SB78	Greece	1997
<i>K. grimontii</i> (Ko6)	07A479	SB324	Germany	1998
<i>K. grimontii</i> (Ko6)	06D090	SB352	France	1998
<i>K. grimontii</i> (Ko6)	06D021 ^T	SB73	France	1997
<i>K. oxytoca</i> (Ko2)	ATCC 13182 ^T	SB175	n.a.	n.a.
<i>K. oxytoca</i> (Ko2)	02A067	SB131	Belgium	1997
<i>K. oxytoca</i> (Ko2)	NCTC 49131	SB136	n.a.	n.a.
<i>K. aerogenes</i>	none	MIAE07652	France	n.a.
<i>K. aerogenes</i>	CIP 60.86 ^T	SB3629	France	n.a.
<i>K. aerogenes</i>	01A089	SB538	Austria	1997
<i>K. aerogenes</i>	02A002	SB539	Belgium	1997
<i>Raoultella terrigena</i>	ATCC 33257 ^T	SB170	n.a.	n.a.
<i>R. terrigena</i>	17C143	SB313	Spain	1998
<i>R. terrigena</i>	V9813596	SB2796	Netherlands	1998
<i>R. planticola</i>	01A041	SB7	Austria	1997
<i>R. planticola</i>	ATCC 33531 ^T	SB174	n.a.	n.a.
<i>R. planticola</i>	12C169	SB303	Netherlands	1998
<i>R. ornithinolytica</i>	ATCC 31898	SB171	n.a.	n.a.
<i>Acinetobacter calcoaceticus</i>	ATCC 14987	none	USA	n.a.
<i>A. lwoffii</i>	none	MIAE07654	France	1998
<i>A. johnsonii</i>	ATCC 17909 ^T	none	n.a.	n.a.
<i>A. pittii</i>	none	MIAE07655	France	1998
<i>Aeromonas caviae</i>	none	MIAE07656	France	n.a.
<i>A. hydrophila</i>	none	MIAE07657	France	n.a.
<i>Agrobacterium tumefaciens</i>	C.58	MIAE07675	France	1996
<i>Alcaligenes faecalis</i>	none	MIAE07658	France	n.a.
<i>Bacillus cereus</i>	ATCC 53522	none	USA	n.a.
<i>B. cereus</i>	none	MIAE07659	France	n.a.
<i>B. circulans</i>	none	MIAE07660	France	n.a.
<i>B. megaterium</i>	none	MIAE07661	France	n.a.
<i>B.s subtilis</i>	none	MIAE07662	France	n.a.
<i>Edwardsiella hoshinae</i>	DSM 13771 ^T	none	France	n.a.
<i>E. tarda</i>	DSM 30052 ^T	none	USA	n.a.
<i>Enterobacter hafnia</i>	none	MIAE07653	France	n.a.
<i>Enterococcus casseliflavus</i>	DSM 20680 ^T	none	n.a.	1984
<i>E. faecalis</i>	DSM 12956	none	USA	n.a.
<i>E. faecalis</i>	DSM 20376	none	n.a.	n.a.
<i>E. faecium</i>	DSM 25389	none	Netherlands	n.a.
<i>E. faecium</i>	DSM 6177	none	n.a.	n.a.
<i>E. faecium</i>	DSM 25644	none	Georgia	n.a.
<i>E. faecium</i>	DSM 25697	none	South Korea	n.a.
<i>E. faecium</i>	DSM 13590	none	Germany	n.a.
<i>E. faecium</i>	DSM 20477 ^T	none	n.a.	n.a.
<i>E. galinarum</i>	DSM 20628	none	n.a.	n.a.
<i>E. hirae</i>	DSM 20160 ^T	none	n.a.	n.a.
<i>E. raffinosus</i>	DSM 5633 ^T	none	USA	1979

<i>Escherichia coli</i>	DSM 499	none	n.a.	n.a.
<i>E. coli</i>	none	MIAE02388	France	2015
<i>E. coli</i>	none	MIAE02376	France	2015
<i>E. coli</i>	none	MIAE02510	France	2015
<i>E. coli</i>	none	MIAE02381	France	2015
<i>E. coli</i>	none	MIAE02198	France	2015
<i>Hafnia alvei</i>	DSM 30163 ^T	none	n.a.	n.a.
<i>Listeria monocytogenes</i>	ATCC BAA-679, (EGDe)	none	n.a.	n.a.
<i>L. monocytogenes</i>	DSM 15675	none	n.a.	n.a.
<i>L. monocytogenes</i>	DSM 19094	none	United Kingdom	n.a.
<i>L. innocua</i>	none	MIAE07668	France	2018
<i>Morganella morganii</i>	none	MIAE07669	France	n.a.
<i>Pantoea agglomerans</i>	DSM 3493 ^T	none	Zimbabwe	1956
<i>Proteus mirabilis</i>	none	MIAE07670	France	n.a.
<i>P. vulgaris</i>	none	MIAE07671	France	n.a.
<i>Providencia rettgeri</i>	none	MIAE07672	France	n.a.
<i>P. stuartii</i>	none	MIAE07673	France	n.a.
<i>Pseudomonas brassicacearum</i>	DSM 13227 ^T	none	France	n.a.
<i>P. fluorescens</i>	DSM 50106	none	n.a.	n.a.
<i>P. gessardii</i>	CIP 105469 ^T	none	France	n.a.
<i>P. jessenii</i>	CFBP4842	none	France	1995
<i>P. kilonensis</i>	DSM 13647 ^T	none	Germany	n.a.
<i>P. libanensis</i>	DSM 17149 ^T	none	Lebanon	1995
<i>P. lini</i>	DSM 16768 ^T	none	France	n.a.
<i>P. monteilii</i>	DSM 14164 ^T	none	France	1990
<i>P. putida</i>	ATCC 12633 ^T	none	n.a.	n.a.
<i>P. rhodesiae</i>	DSM 14020 ^T	none	France	n.a.
<i>P. thivervalensis</i>	CFBP5754	none	France	2000
<i>Salmonella bongori</i>	DSM 13772 ^T	none	n.a.	n.a.
<i>S. enterica</i>	DSM 554	none	n.a.	n.a.
<i>S. enteritidis</i>	none	MIAE07674	France	2007
<i>S. subterranea</i>	DSM 16208 ^T	none	USA	n.a.
<i>Serratia fonticola</i>	DSM 4576 ^T	none	n.a.	n.a.
<i>S. liquefaciens</i>	DSM 4487 ^T	none	Ireland	1997
<i>Shigella boydii</i>	DSM 7532 ^T	none	India	n.a.
<i>Staphylococcus aureus</i>	DSM 2569	none	South Korea	n.a.
<i>S. capitis</i>	DSM 20326 ^T	none	n.a.	n.a.
<i>S. epidermidis</i>	DSM 20044 ^T	none	n.a.	n.a.
<i>Stenotrophomonas maltophilia</i>	DSM 50170 ^T	none	USA	1961
<i>Vibrio chagasii</i>	DSM 17138 ^T	none	Norway	n.a.

n.a. : information not available, ^T type strain

*SB: Internal strain collection number of the Biodiversity and Epidemiology of Bacterial Pathogens unit, Institut Pasteur ; MIAE : Internal strain collection number of the UMR Agroecologie, INRA

TABLE 2 Molecular target sequences previously proposed for *Klebsiella pneumoniae* identification.

Target	Annotation	Amplicon (bp)	Targeted group	Reference (PubMed ID)
1. 16S-23S rRNA ITS	tDNA-Ala	130	Kp complex	18579248
2. 16S-23S rRNA ITS	tDNA-Ala – 23S rDNA	260	Kp complex	18579248
3. <i>khe</i>	hemolysin	77	Kp complex	19644019
4. <i>tyrB</i>	tyrosine aminotransferase	931	Kp complex	23357944
5. KpI50233a	putative acyltransferase	484	Kp1	25261063
6. KP878	transferase	878	Kp1	25886267
7. KP888	phosphohydrolase	888	Kp1	25886267
8. <i>bla</i> _{SHV}	chromosomal SHV	995	Kp1	28139276
9. <i>celB</i>	cellobiose-specific PTS family enzyme IIC component	180	Kp1	31456171
10. KV770	phosphoglycerate mutase	449	Kp3/5	25886267
11. KV1000	thiopurine S-methyltransferase	499	Kp3/5	25886267
12. KV1615	N-acetyltransferase	438	Kp3/5	25886267
13. <i>bla</i> _{LEN}	chromosomal LEN	485	Kp3/5	28139276
14. <i>bla</i> _{OKP}	chromosomal OKP	348	Kp2/4	28139276
15. ZKIR	<i>zur-khe</i> intergenic region	78	Kp complex	This study

ITS, internal transcribed spacer; PTS, phosphotransferase system; *bla*, beta-lactamase; bp, base pairs.

TABLE 3 Comparison between ZKIR qPCR and culture results obtained using samples collected in Auxonne, France, between July and September 2018.

Source	No. of samples	qPCR positive samples (%)	Culture positive samples (%)
Bulk soil	32	13 (40.6%)	13 (40.6%)
Roots	31	19 (61.3%)	16 (51.6%)
Leaves	29	8 (27.6%)	7 (24.1%)
Water	4	1 (25.0%)	1 (25.0%)
Total	96	41/96 (42.7 %)	37/96 (38.5%)